



HTC One M8 Rear Case Replacement

This guide will demonstrate how to separate the front and back casings of the HTC One M8.

Written By: Michael Gonzalez



INTRODUCTION

Use this guide to replace the rear case on your HTC One M8.



TOOLS:

- [iOpener](#) (1)
 - [Phillips #00 Screwdriver](#) (1)
 - [iFixit Opening Tools](#) (1)
 - [T5 Torx Screwdriver](#) (1)
 - [SIM Card Eject Tool](#) (1)
 - [iFixit Opening Picks set of 6](#) (1)
-



PARTS:

- [HTC One \(M8 Verizon\) Rear Case](#) (1)

Step 1 — SIM Card



- Insert a SIM card eject tool or a paperclip into the small hole in the SIM card tray, located on the upper left hand side of the phone.
- Press to eject the tray.
- ⓘ This may require a significant amount of force.

Step 2



- Remove the SIM card tray assembly from the HTC One M8.
- ⓘ When reinserting the SIM card, ensure that it is in the proper orientation relative to the tray.

Step 3 — MicroSD Card



- Insert a SIM card eject tool or a paperclip into the small hole in the microSD card tray, located on the upper right hand side of the phone.
- Press to eject the tray.
- ⓘ This may require a significant amount of force.

Step 4



- Remove the microSD card tray assembly from the HTC One M8.
- ✦ When reinserting the microSD card, ensure that it is in the proper orientation relative to the tray.

Step 5 — Rear Case



- Use an iOpener or heat gun to loosen the adhesive on the upper and lower speaker grilles.
- ⓘ Refer to the [iOpener guide](#) for info on how to use the iOpener.

Step 6



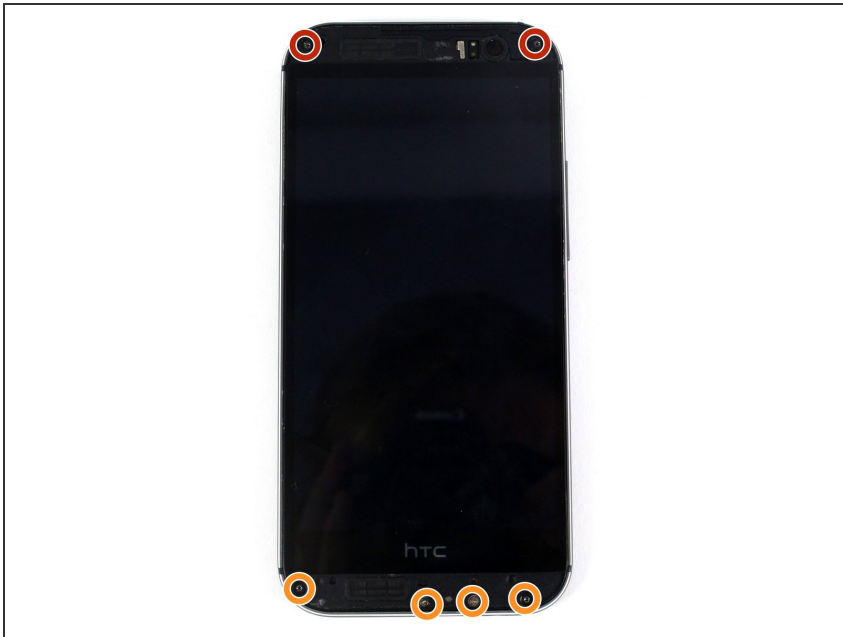
- Use a plastic opening tool to gently peel up the lower speaker grille.
- ⓘ The adhesive is messy, and can be removed using Goo-gone.

Step 7



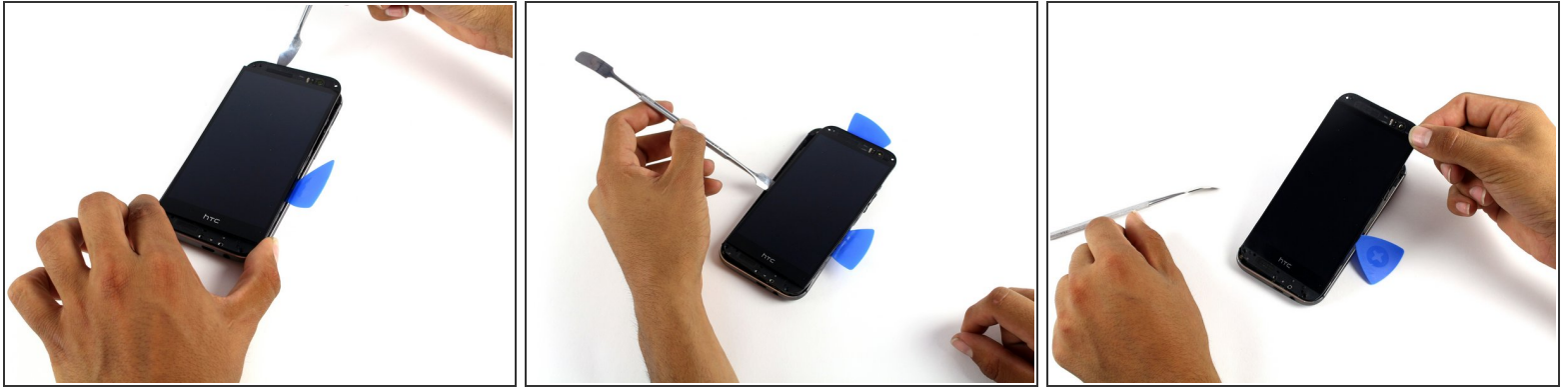
- Use a plastic opening tool to gently peel up the upper speaker grille.

Step 8



- Remove the two silver 3 mm Phillips #00 screws from the top.
- Remove the four black 4 mm T5 Torx screws from the bottom.

Step 9



- Work your way around the perimeter of the phone with a spudger and plastic opening picks to free the clips that secure the rear case to the display assembly.
 - ⓘ A metal spudger is pictured, but it is best to use a nylon spudger to prevent marring the device.
 - ⓘ Be careful not to lose the power button: it sits loosely in the top of the lower chassis.
- ⚠ Significant force may be required to pry the casing apart.

To reassemble your device, follow these instructions in reverse order.

This document was last generated on 2019-01-14 06:28:17 PM.