



# iPod Nano 2nd Generation Bottom Bezel Bracket Replacement

Written By: iRobot



## INTRODUCTION

The metal bracket within your iPod.



### TOOLS:

- [iFixit Opening Tools](#) (1)
- [Metal Spudger](#) (1)
- [Phillips #00 Screwdriver](#) (1)



### PARTS:

- [iPod nano \(2nd Gen\) Bottom Bezel Bracket](#) (1)

## Step 1 — Bottom Bezel



- i** Before opening your iPod, ensure that the hold switch is in the locked position.

## Step 2



- !** When removing the the bottom bezel, be sure not to bend the plastic surrounding the dock connector.
- Carefully insert an iPod opening tool in the seam between the metal casing and white plastic bezel
  - Lift the bottom bezel off the iPod. It's glued on using a mild adhesive, so some force may be required.

### Step 3 — Bottom Bezel Bracket



- Remove the following two screws:
  - One #00 Phillips screw with a large head near the headphone jack.
  - One #00 Phillips screw with a smaller head near the side of the iPod. This screw strips easily, so be sure to press down firmly on the screwdriver.

### Step 4



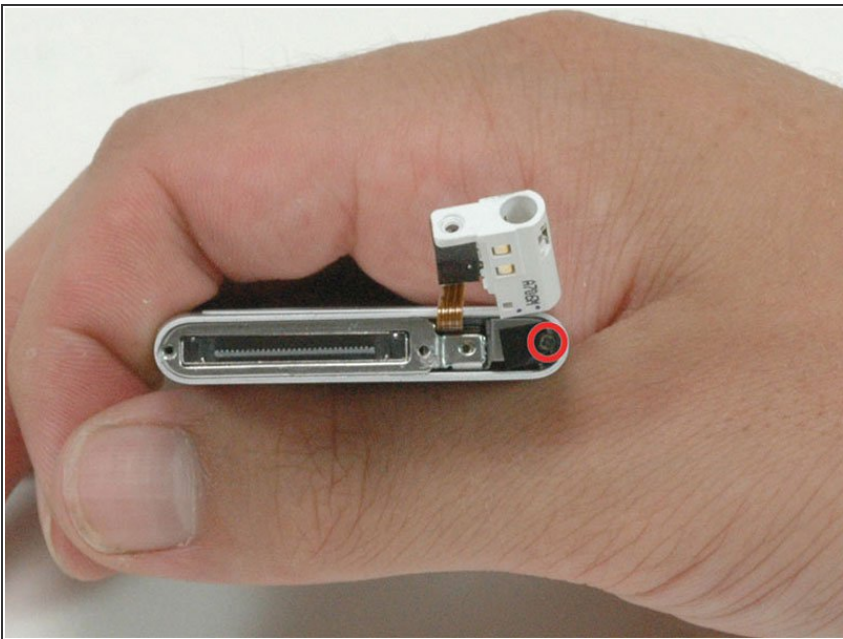
- Use a metal spudger to carefully pry the headphone jack out of the casing. **DO NOT** remove the headphone jack from the iPod entirely, as it is connected via a fragile ribbon connector to the click wheel.

## Step 5



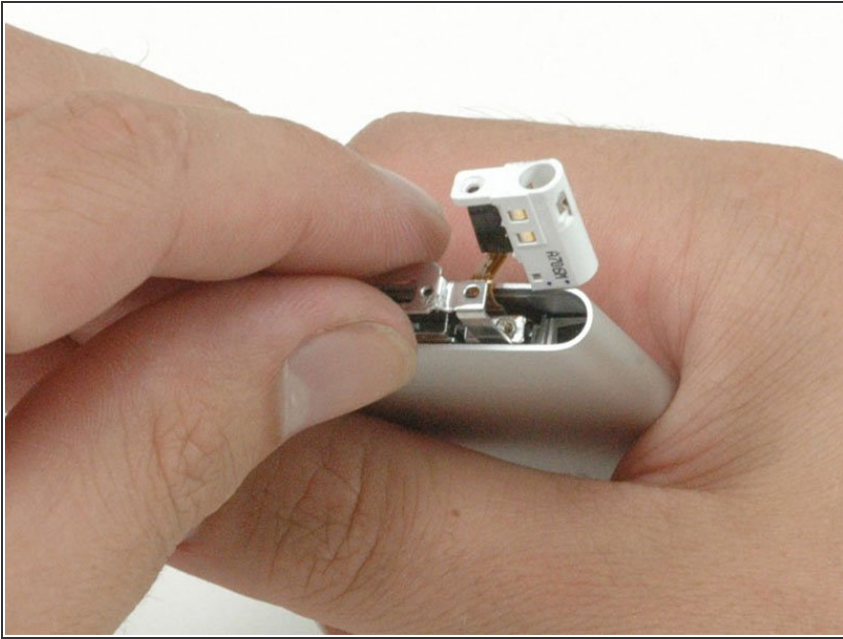
- Slide the headphone jack out until the white plastic housing is no longer held in place by the metal casing.

## Step 6



- Remove the newly-revealed Phillips #00 screw from beneath the headphone jack.

## Step 7



- Lift the bottom bezel bracket out of the iPod.

To reassemble your device, follow these instructions in reverse order.