



Microsoft Zune 30 GB Battery and Hard Drive Replacement

How to replace the hard drive and battery on a Microsoft Zune 30 GB.

Written By: oldturkey03



INTRODUCTION

This is a relative easy way to change your battery and hard drive on a Zune 30gb

TOOLS:

- [Phillips #00 Screwdriver](#) (1)
 - [Flathead 3/32" or 2.5 mm Screwdriver](#) (1)
 - [iFixit Opening Tools](#) (1)
-

Step 1 — Battery and Hard Drive



- Tools that are needed to replace the battery and the hard drive
- small Phillips screwdriver
- small jewelers flat head screwdriver
- case opening tool, I use my trusty ipod opener :)
- definitely glasses if you are supposed to have them. Some of this stuff is really small.

Step 2



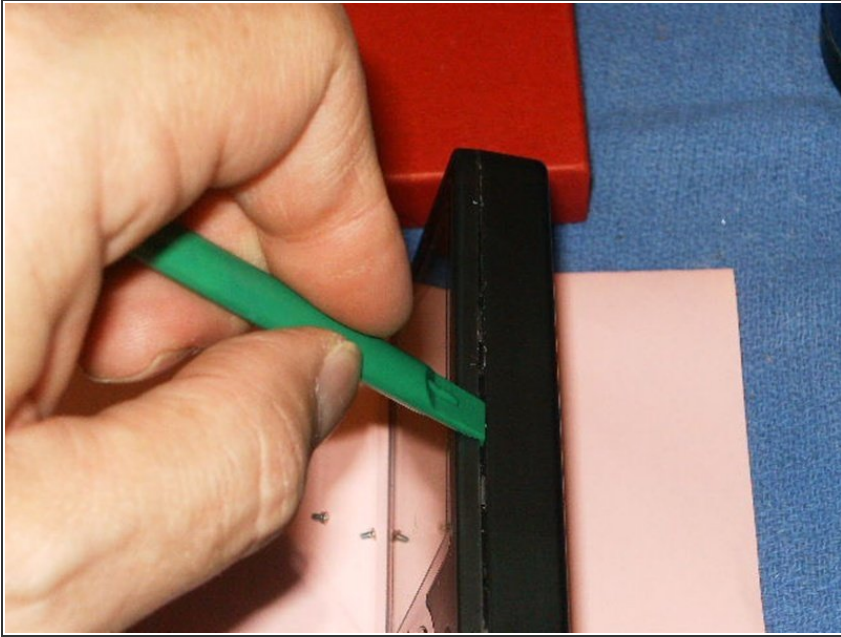
- Start off by removing the spacer from the bottom dock port. It is just pushed in, so all you need is a small jeweler's screwdriver to pry it out. Use the smaller ends of the port as the pry point so you don't break the spacer.

Step 3



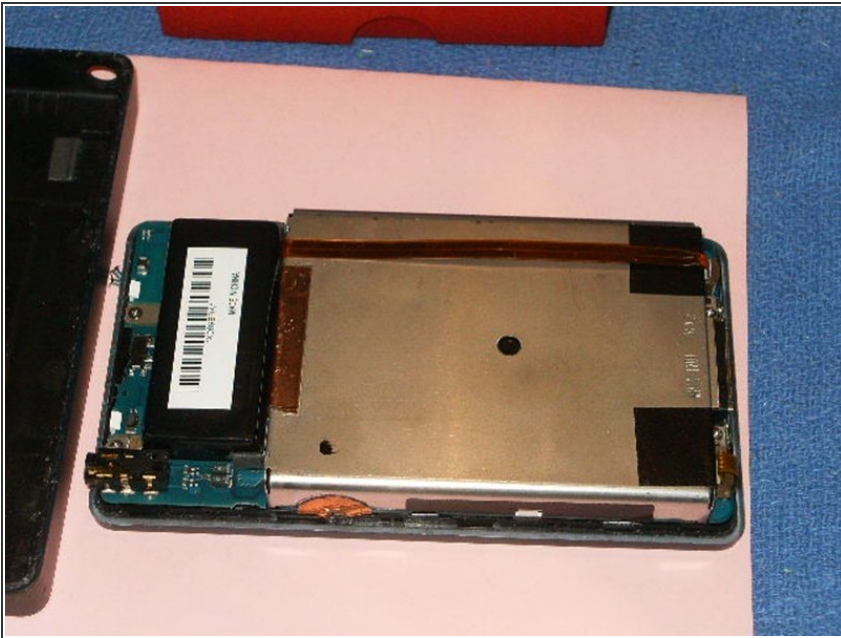
- Next remove the two small Phillips screws.

Step 4



- Now it is time to open the case. I used my trusty Ipod opening tools and started on the longer side of the Zune. Just like the Ipod, take your time and carefully open the case. Sometimes it works better if you use two tools. Once it opens, be **CAREFUL** around the headphone jack when you lift up the case. Lift it slowly at the port end and then the headphone end. The headphone seems to extend a little into the case and you **DO NOT** want to break it off the board....

Step 5



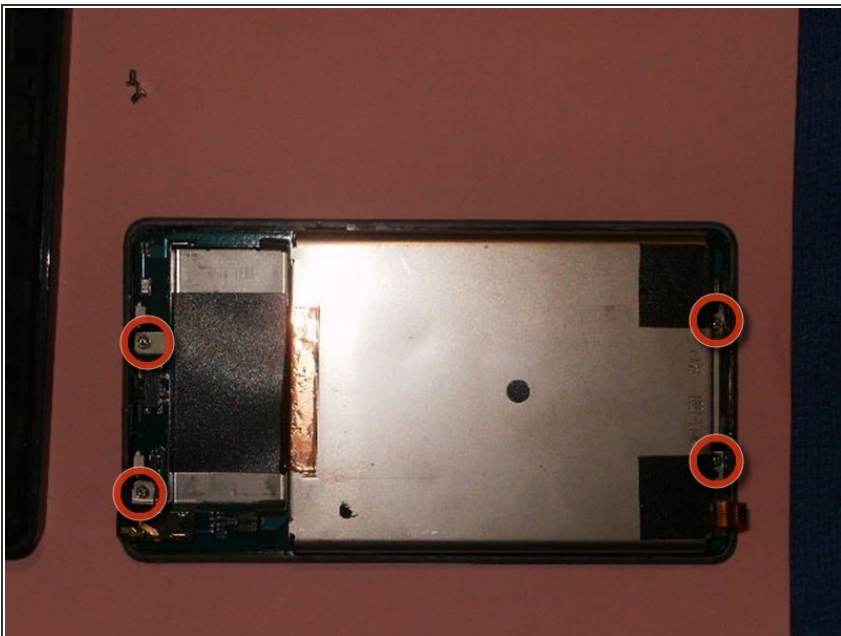
- Now with the backing off we have free access to the battery and the hard drive caddy.

Step 6



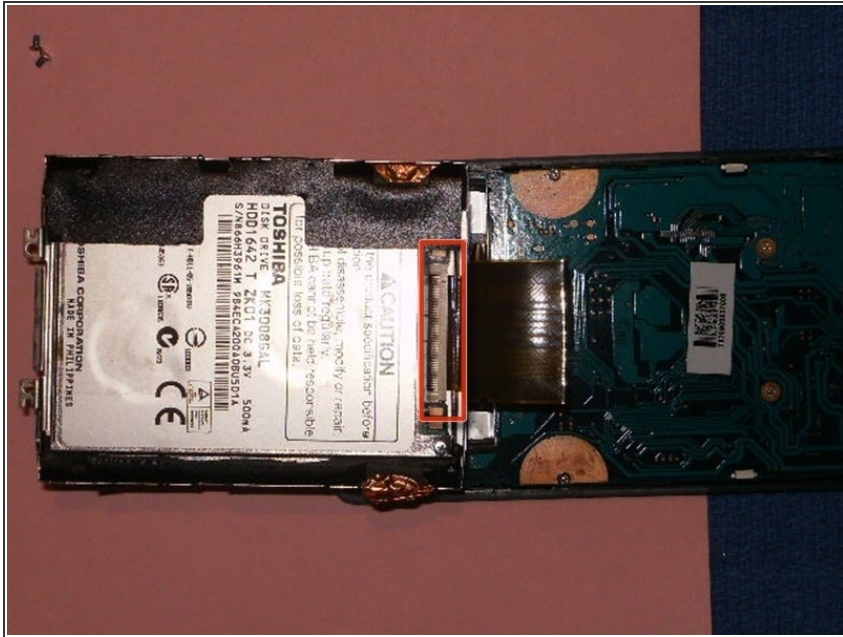
- Disconnect the battery by lifting the brown slide gently up, freeing the cable. You can now safely remove the battery. Disconnect the clickwheel cable afterwards.

Step 7



- Now remove the 4 screws holding the drive case as well as the clip for the battery on the board .

Step 8



- With the battery and the four screws for for the hard drive caddy removed, lift the caddy up and flip it toward the headphone end of the Zune. Remove the hard drive cable clip by opening the black clip on the connector. Use your fingernails or the iPod tool to move the clip carefully to the open position. Take off the sticky tape to reveal the hard drive bumpers. Remove them to free the hard drive. Now replace the hard drive and reassemble the Zune.

To reassemble your device, follow these instructions in reverse order.

This document was last generated on 2019-07-10 05:12:43 PM.