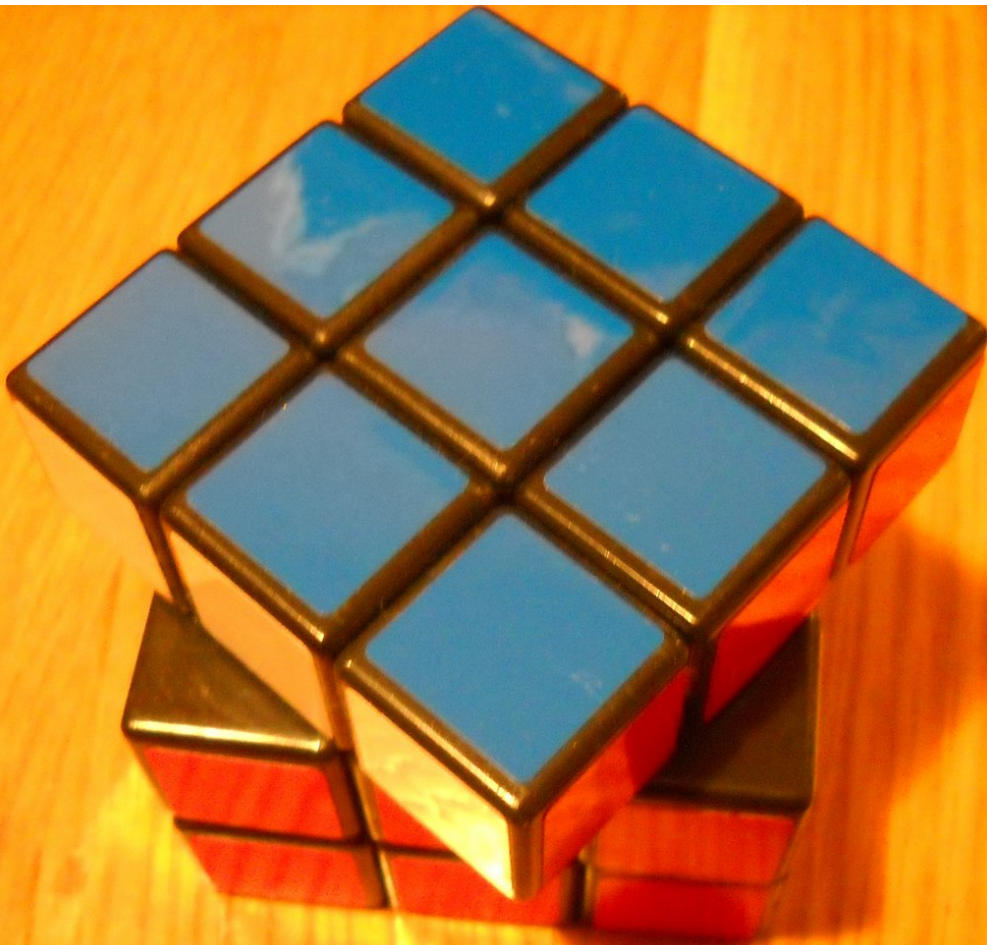




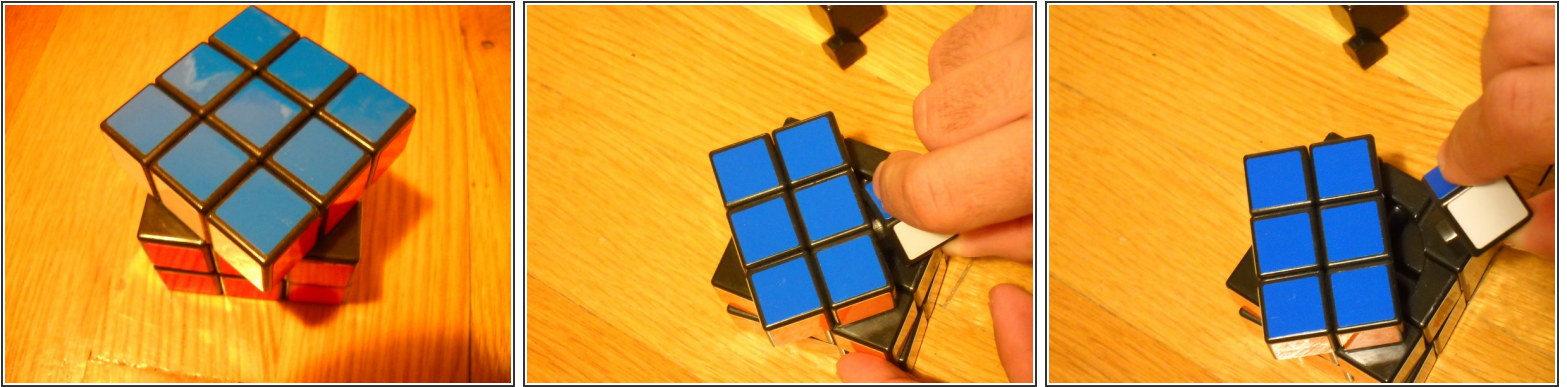
Rubik's Cube Teardown

How to take apart a Rubik's Cube

Written By: rab777hp

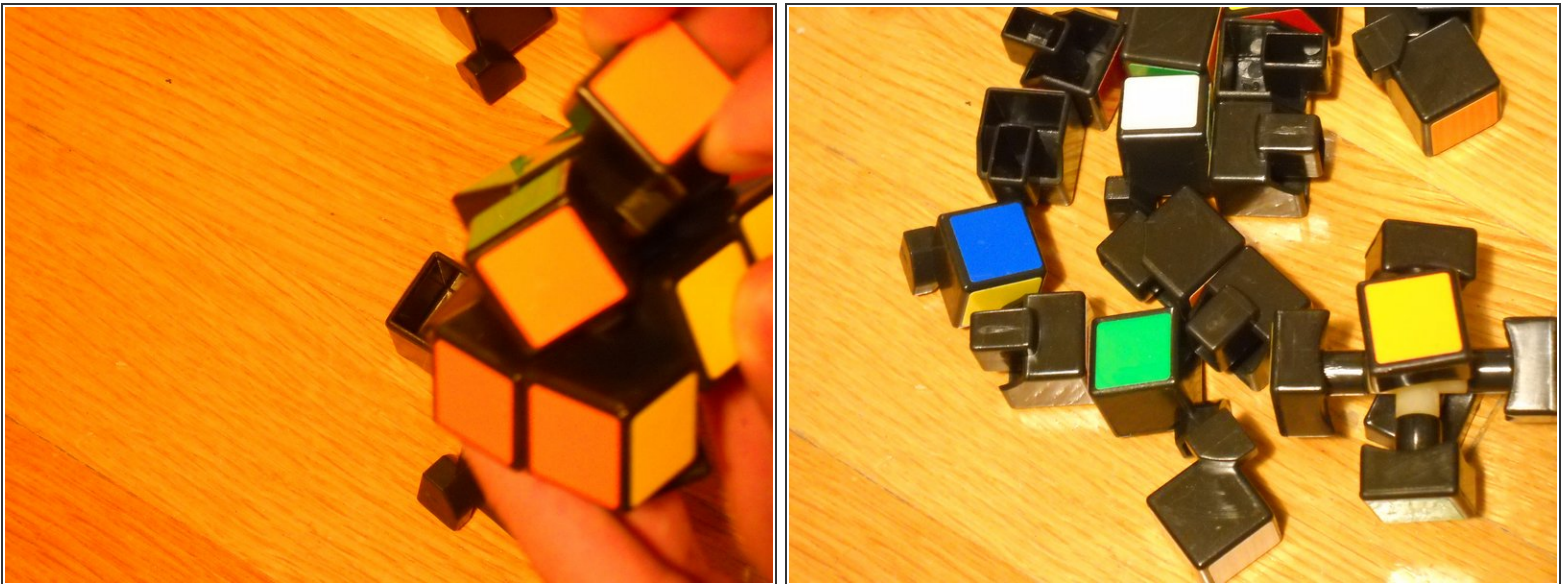


Step 1 — Rubik's Cube Teardown



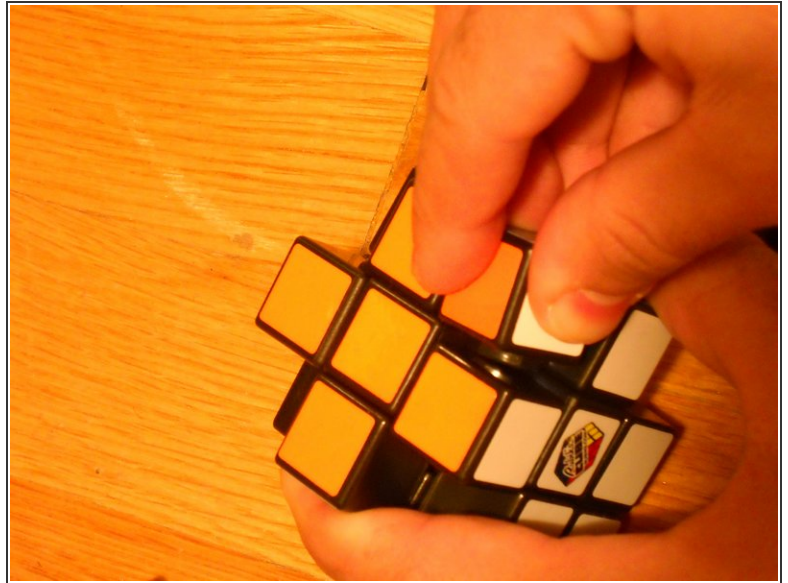
- Turn the top row so that each corner is roughly halfway between the sides
- Push the pieces up until they pop out of the cube, then, slide the rest out
- Repeat this process until you clear the level

Step 2



- You should be able to just directly pull out the rest of the blocks, like so
- And there you have it!
- You'll have the center piece, with the six centers of the six sides, the turning mechanism

Step 3



- To reassemble, snap all the pieces back into place, and try not to rotate the faces.
- It helps to start with the middle pieces first
- Don't be afraid to use force!
- Once you have the middle pieces in it's pretty simple to just push in the corner pieces
- Again- don't be afraid to use force!

To reassemble your device, follow these instructions in reverse order.