



How to Factory Reset Huawei Ascend P6

Huawei Ascend P6 - Factory, Hard, Master reset

Written By: ZFix



master / hard reset

INTRODUCTION

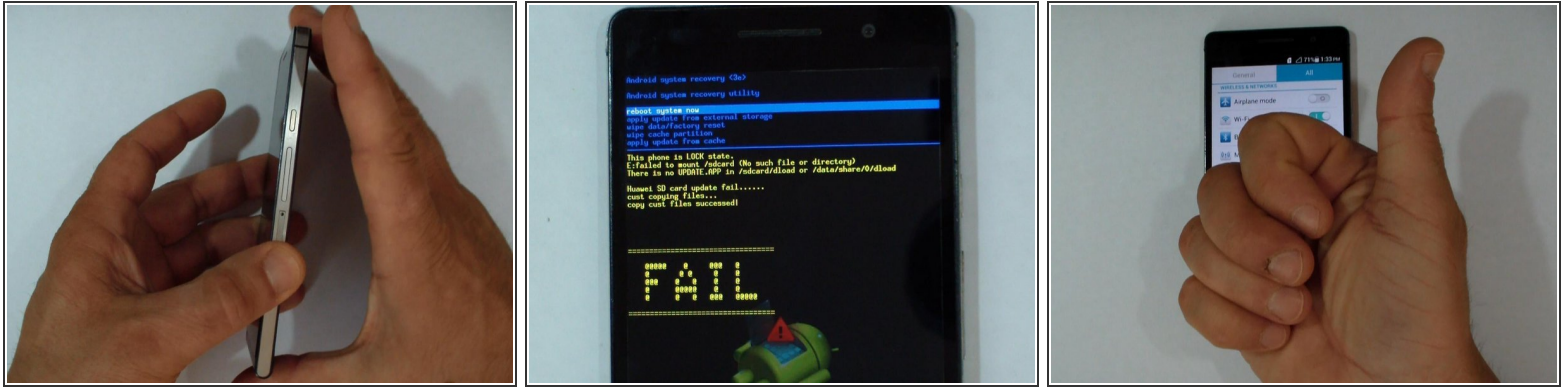
If you forgot your Password, PIN, Pattern Screen Lock and you can't enter the phone menu with your Google account, registered on this device, the only way to bypass the security is Factory reset.

WARNING!

Factory Reset will permanently delete ALL of your data!

[video: https://www.youtube.com/watch?v=R_HUu6Gk5ow]

Step 1 — How to Factory Reset Huawei Ascend P6



- Switch off the phone.
- Press and hold: Volume Up, Volume down and Power buttons together.
- When you see the Ascend logo release only the Power button.
- This is Android System Recovery menu.
- Use Volume Up/Down buttons for navigation and the Power button for OK and select one after the other: "wipe data/factory reset" "Yes -- erase all data" "reboot system now".
- .
- .
- **Did you do it successfully?**

To reassemble your device, follow these instructions in reverse order.