



# Nintendo GameCube Controller Teardown

This guide will show how to teardown the GameCube Controller so that you may replace certain parts.

Written By: Pete Moreno



---

## INTRODUCTION

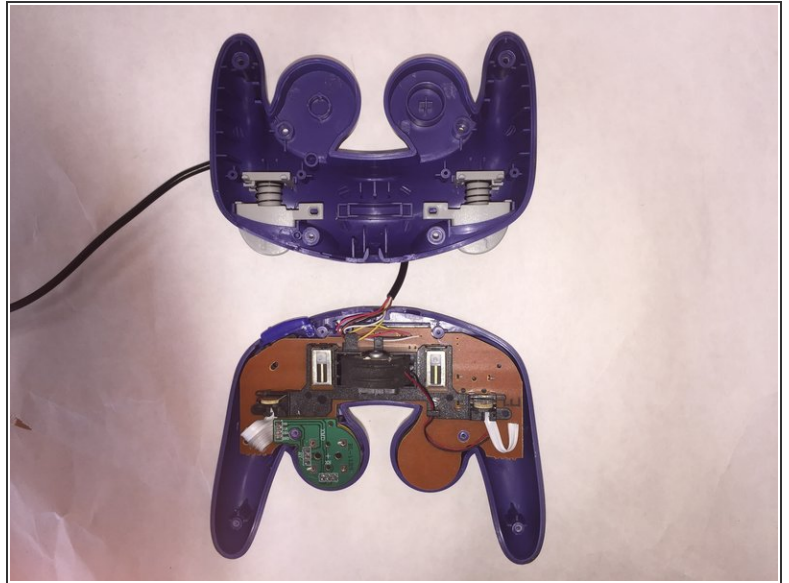
This guide will show how to teardown the GameCube Controller so that you may replace certain parts.

---

### TOOLS:

- [Screwdriver](#) (1)
-

## Step 1 — Separating the Separate Halves:



- Remove the six phillips head screws from the underside of the controller.
- After these screws are removed, you can separate the bottom from the top of the controller.

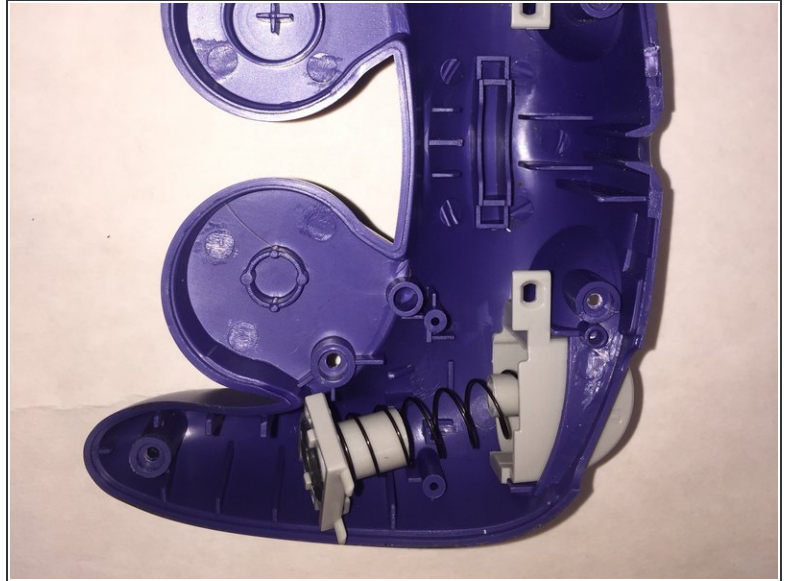
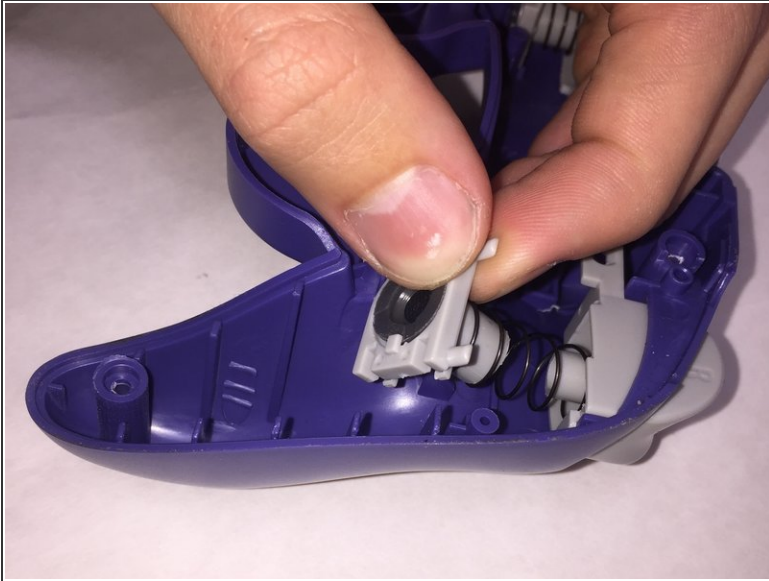
## Step 2 — Removing the Control Panel and Buttons:



- After removing the back of the controller, you can lift the circuit board out of the plastic shell.
- With the circuit board removed, you can access the main buttons and remove them if desired.



### Step 3 — Removing the Remotes Bumpers:



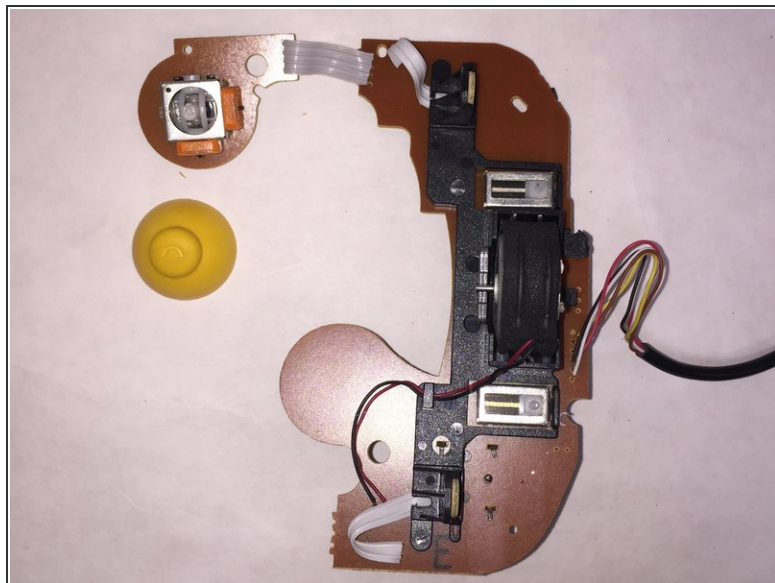
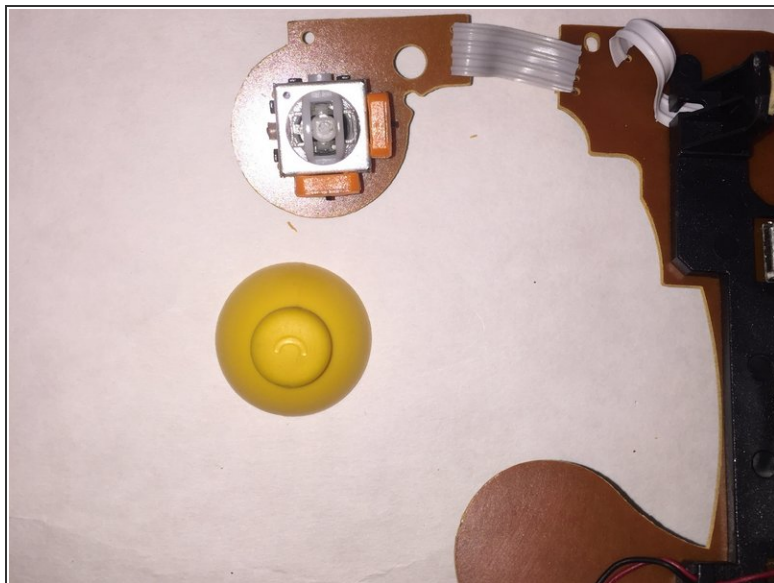
- To remove the left and right bumpers from the bottom of the controller, pull up on the square base that keeps the button in place and then pull the button through the shell.

### Step 4 — Pieces of the Controller:



- These are the parts that should come out of the remote; not regarding the control panel.

## Step 5 — Removing the C-Stick:



- Once the control panel is removed from the controller the c-stick can be easily, but carefully, removed.

To reassemble your device, follow these instructions in reverse order.