



Samsung Galaxy S6 Camera Lens Glass Replacement

This is a guide to replace the camera lens and the ring. If you want to replace the camera glass only please proceed to step 6.

Written By: Sophia



INTRODUCTION

[video: <https://www.youtube.com/watch?v=vXhy48pBk-M>]



TOOLS:

- Heat Gun (1)
- iFixit Opening Picks set of 6 (1)
- Tweezers (1)



PARTS:

- Galaxy S6 Rear Camera Bezel & Lens Cover (1)
- Galaxy S6 Rear Cover Adhesive (1)

Step 1 — Camera Lens Glass



- Remove the back cover at first. It's a pity that we only have a S6 with broken back cover to show how to do camera lens glass replacement.

Step 2



- Please be careful when remove the back cover! It's just a little weak.

Step 3



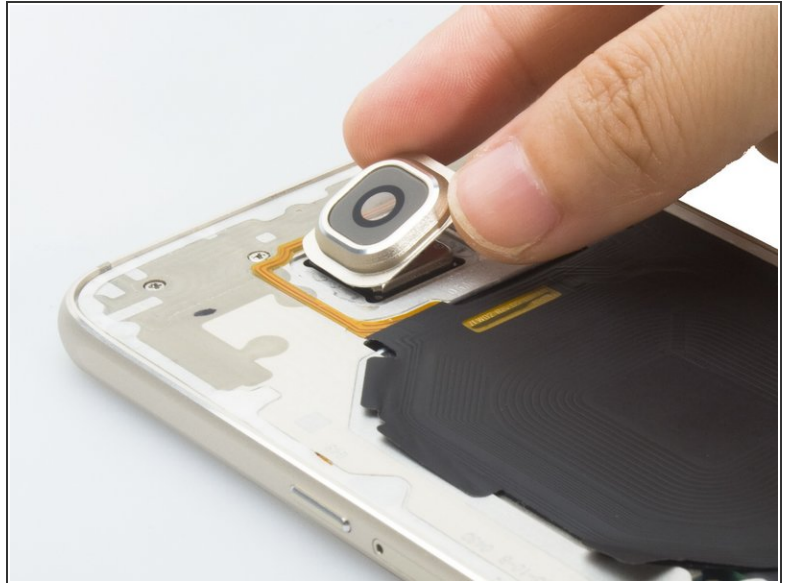
- And then pry up the camera lens ring from bottom right corner. There is some adhesive underneath. Be careful and avoid scratching the metal ring with sharp tweezers.
- At last, push the camera lens glass by your finger or with a spudger and remove it finally.

Step 4



- Now it's time to place the new camera lens. Peel off the upper film and assemble the glass with the ring.

Step 5



- Peel off the bottom film and we can stick the new camera lens assembly back.
- And one tips: you will need a piece of new back cover sticker because the old one maybe can't be used any more.
- That's the guide to replace S6 camera glass and camera ring together.

Step 6



- If your S6 camera lens was broken heavily, just remove it directly but very carefully. Don't hurt the camera or scratch the metal ring.

Step 7



- Place the sticker on the camera ring at first.

Step 8



- And then stick on the new camera glass and done the replacement.
- That's the guide for replace S6 camera glass only.

To reassemble your device, follow these instructions in reverse order.