



# Keurig K75 Water Pump Replacement

Here is how to replace the water pump of a Keurig Select Brewer that may have been destined for the garbage but it was quickly saved. This may not be a toy for some but it sure is to me.

Written By: Dans iPod Repair



## INTRODUCTION

Here is a brewer that had mysteriously stopped working so i set out to fix it.



### TOOLS:

- [Phillips #2 Screwdriver](#) (1)
- [Soldering Iron](#) (1)
- [Utility Knife](#) (1)
- [Power Drill](#) (1)  
*with 1.5 - 2.0 mm (1/16" - 5/64") drill bit*



### PARTS:

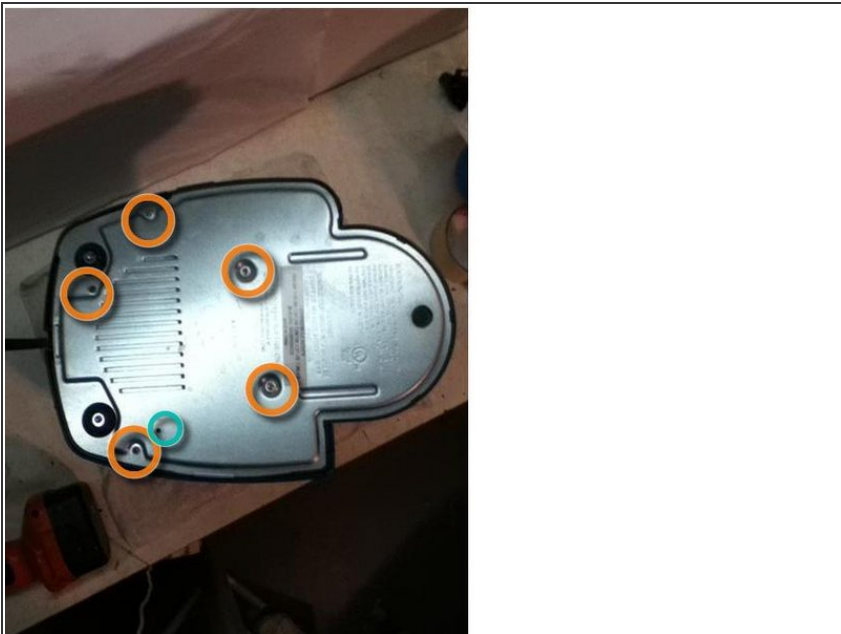
- [Zip Ties](#) (2)  
small

## Step 1 — Water Pump



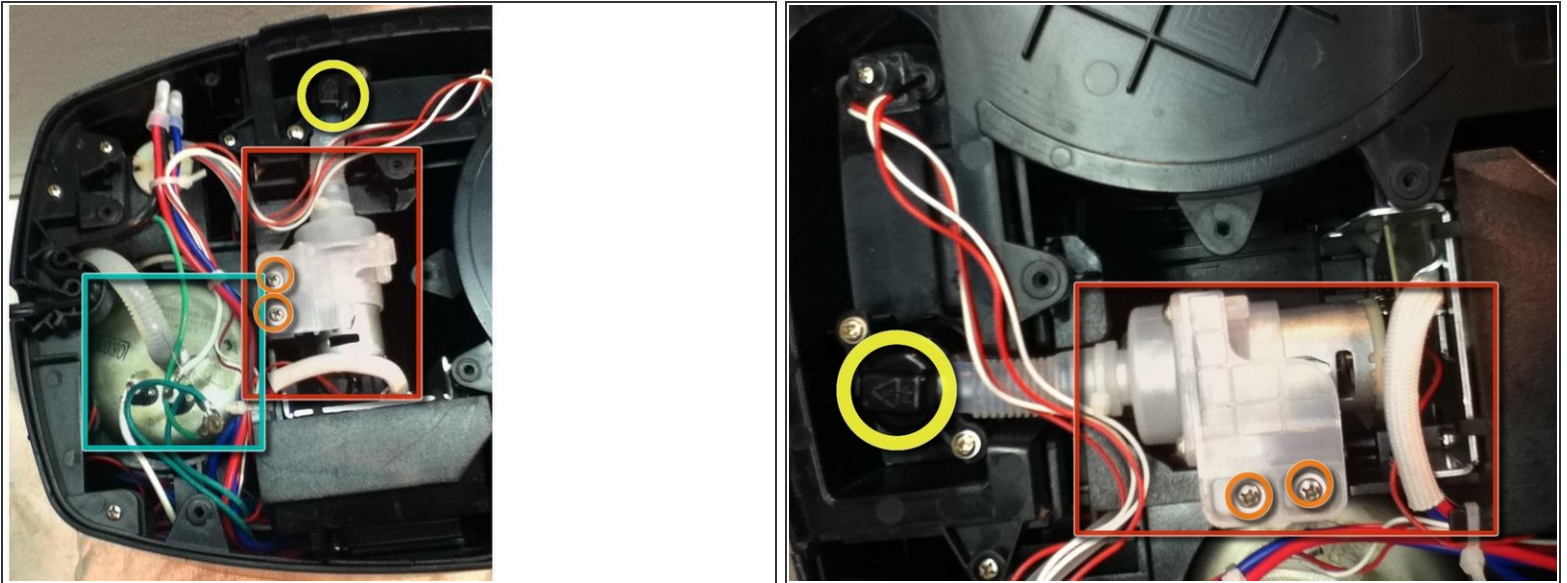
- Here she is. Now lets take her apart!
- Be sure to unplug the unit or risk a dangerous electric shock.
- Remove the water reservoir and the cup rest; set them aside.

## Step 2



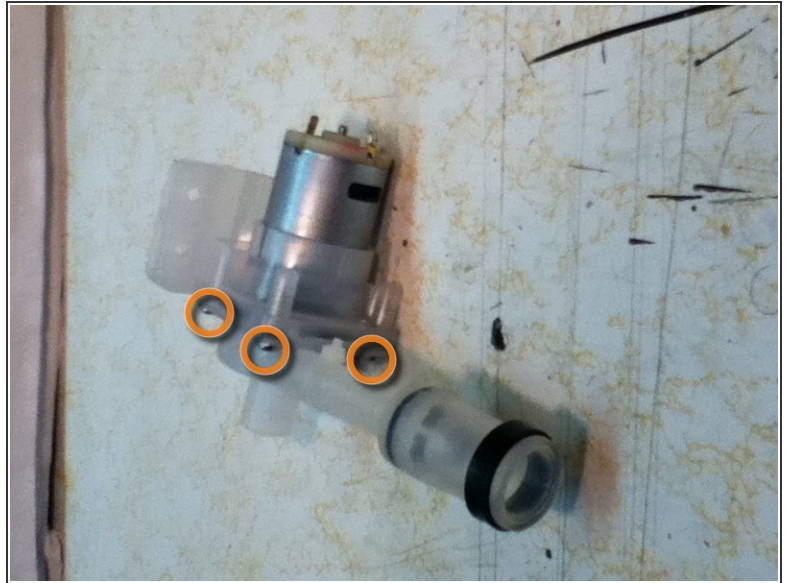
- Start by removing the bottom cover.
  - These 5 screws hold it on, remove them.
  - This rivet connects the ground rivets to the cover, it will need to be drilled out to fully remove the cover.
- ⚠ Do not remove the feet as it is not necessary.

### Step 3



- View without cover.
- Here is the water pump.
- Water tank
- Inlet, remove the two screws as it is attached to the pump
- Remove these screws to free the pump. once free \*carefully\* cut the cable ties on the two hoses so it can be removed
- Once all the lines are free you will need to un-solder the two wires attached to the pump so that it can be fully removed.

## Step 4



- And there you have it. If you have a new one you can now install it.
  - ⓘ Don't forget to replace those zip ties that you cut off.
- If you don't have a new one you can try to fix this one by removing these four screws and removing any blockage.
- Now Keurig doesn't stock spare parts, so unless you can get your hands on another broken machine you will need to fix the existing motor or source a new one. Radio Shack stocks small motors like this, they won't be exact but with a little modification you should be able to get it working.

To reassemble your device, follow these instructions in reverse order.

This document was last generated on 2019-07-10 03:15:45 PM.