



Disassembling Meyer Sound MM-4 Ultra Compact Wide-Range Loudspeaker Case

This is a quick teardown of a Meyer MM-4. It's a very small high end speaker for pro-audio and installation applications.

Written By: RoggeSound



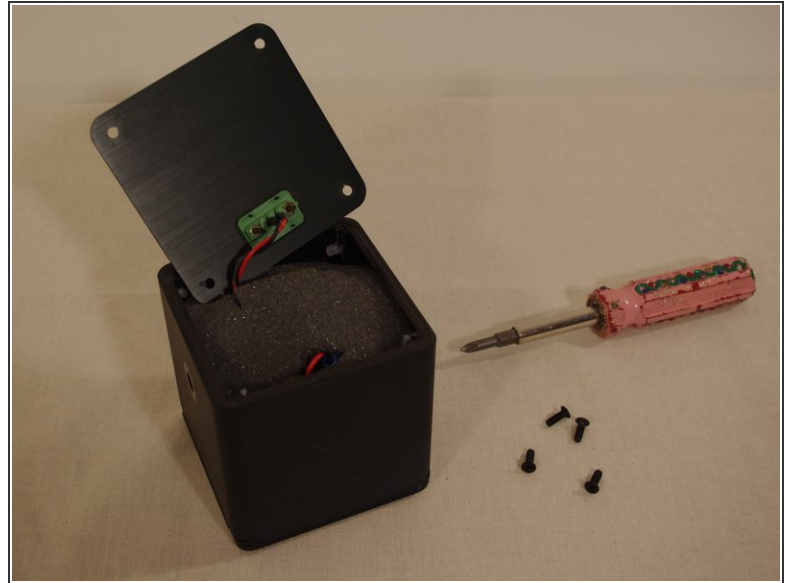
INTRODUCTION

With this guide you can take your MM-4 from one solid brick of a speaker to four parts and a bunch of screws. This is useful if you are replacing a bad driver, or if the connector becomes damaged and you need to replace it.

TOOLS:

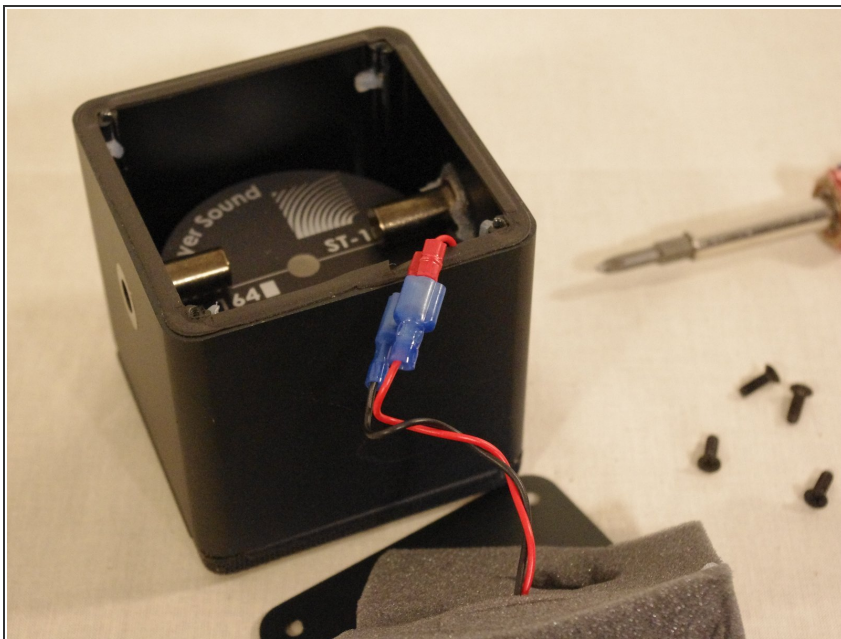
- [1/4" Nut Driver](#) (1)
 - [Phillips #2 Screwdriver](#) (1)
 - [T10 Torx Screwdriver](#) (1)
-

Step 1 — Case



- Turn the speaker face down, so the connector side is up.
- Remove the four #2 Philips screws on the back plate.

Step 2



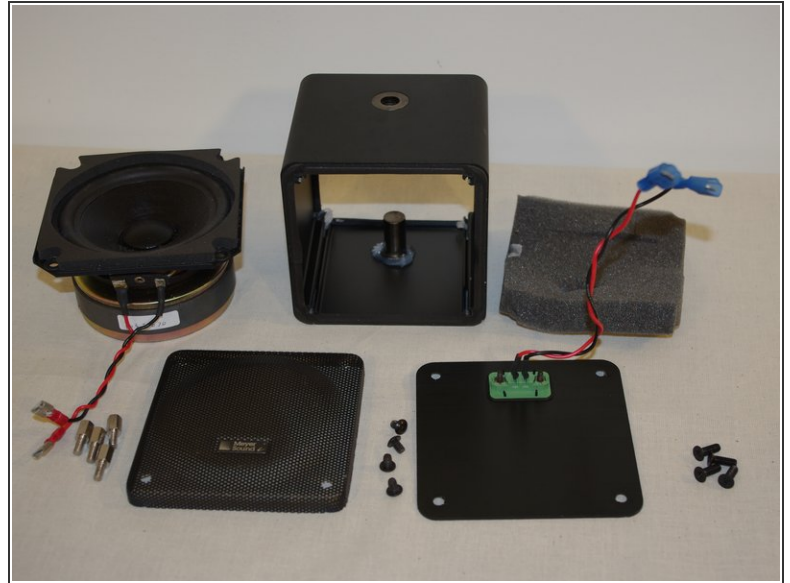
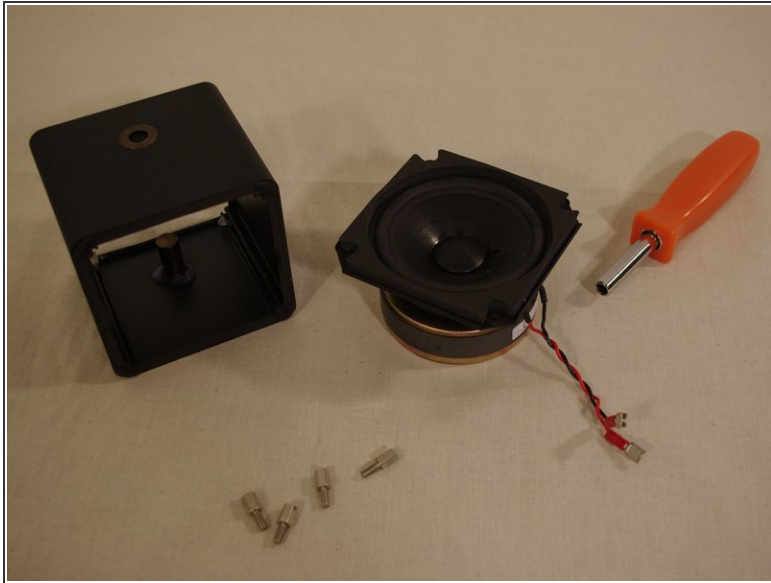
- Remove the foam insert to expose the two spade connectors.
- Carefully separate the connectors

Step 3



- Turn the speaker so the grill side is up.
- Remove the four screws on the grill. I had to use a t-10 Torx bit to remove them.
- The grill is not glued on, but may require a bit of prying to remove.

Step 4



- Remove the four silver bolts holding the speaker in place. These bolts also have threads inset for the grill screws to fit into.
- This is a pretty quick and easy teardown, not too many parts in this one. The meyer speaker's part number is ST-164. It's a 16 Ohm driver.

To reassemble your device, follow these instructions in reverse order.

This document was last generated on 2019-07-16 01:59:37 PM.