



MacBook Air 11" Late 2010 Battery Replacement

Internal prerequisite.

Written By: Andrew Bookholt



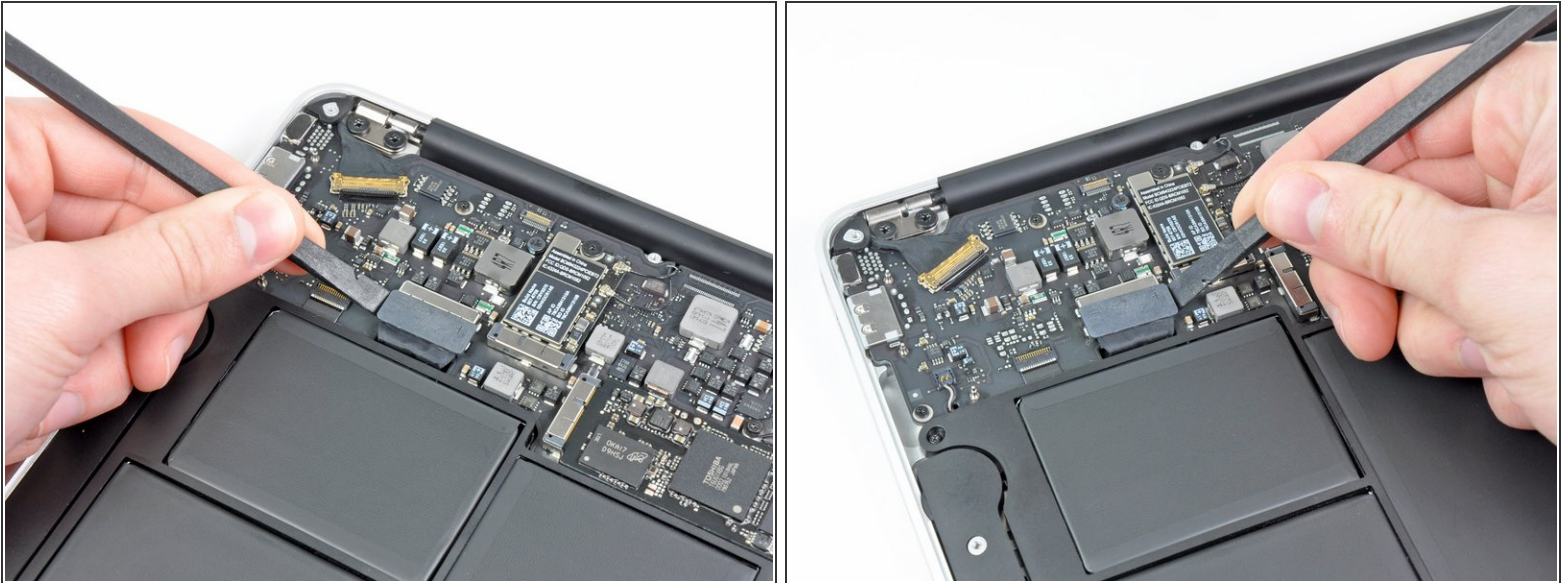
INTRODUCTION


Internal prerequisite.

TOOLS:

- [Spudger](#) (1)
-

Step 1 — Battery



 In this step you will disconnect the battery to help avoid shorting out any components during service.

- Use the flat end of a spudger to pry both short sides of the battery connector upward to disconnect it from its socket on the logic board.
- Bend the battery cable slightly away from the logic board so the connector will not accidentally contact its socket.

To reassemble your device, follow these instructions in reverse order.