



Toilet Flapper Replacement

Replace the flapper assembly in your gravity flush toilet.

Written By: Kristen Gismondi



INTRODUCTION

The toilet flapper opens to allow water to flow from the toilet tank into the bowl when the toilet is flushed. Afterwards, it closes as the toilet tank fills back up. If water is constantly flowing from your toilet tank, chances are your flapper is not functioning properly and will require a replacement.

Step 1 — Tank Lid



- Lift the tank lid up and away from the toilet tank.

Step 2 — Shutting off the Water Supply to a Toilet



- Shut off the stop valve underneath the toilet by turning it clockwise until it becomes hand tight.
- ⓘ The appearance of this valve may differ from toilet to toilet, but most operate the same. Some valves require multiple turns to stop the water while others only require a quarter turn.

Step 3 — Draining a Toilet Tank



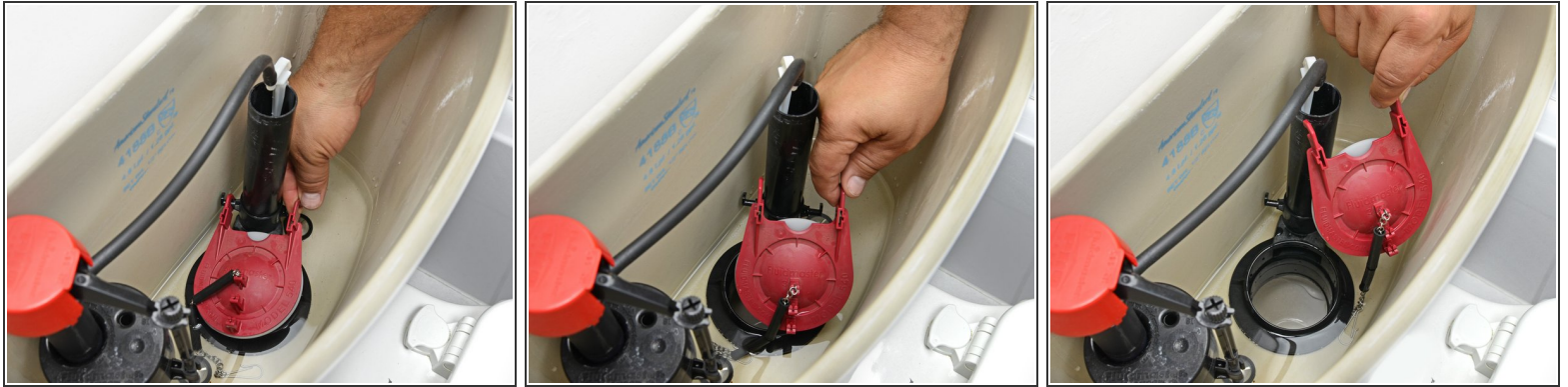
- Push down the flush lever.
- Hold the lever down until water stops draining from the tank.
- ⓘ A small amount of water will remain in the bottom of the tank.
- ⓘ If the flush lever or pull chain have become disconnected, lift up the toilet flapper to drain the tank.

Step 4 — Disassembling Toilet Pull Chain Spring Clasp



- Squeeze open the spring clasp that connects the pull chain to the tank lever.
- Disconnect the spring clasp from the tank lever.

Step 5 — Flapper



- Disconnect the flapper from the posts on each side of the overflow tube.
- Remove the flapper from the toilet tank.

To reassemble your device, follow these instructions in reverse order.