



Rapoo E6700 Bluetooth Touch Keyboard Teardown

This 'guide' shows that it is NOT possible to repair a damaged USB connector on this device.

Written By: Thomas Widmaier

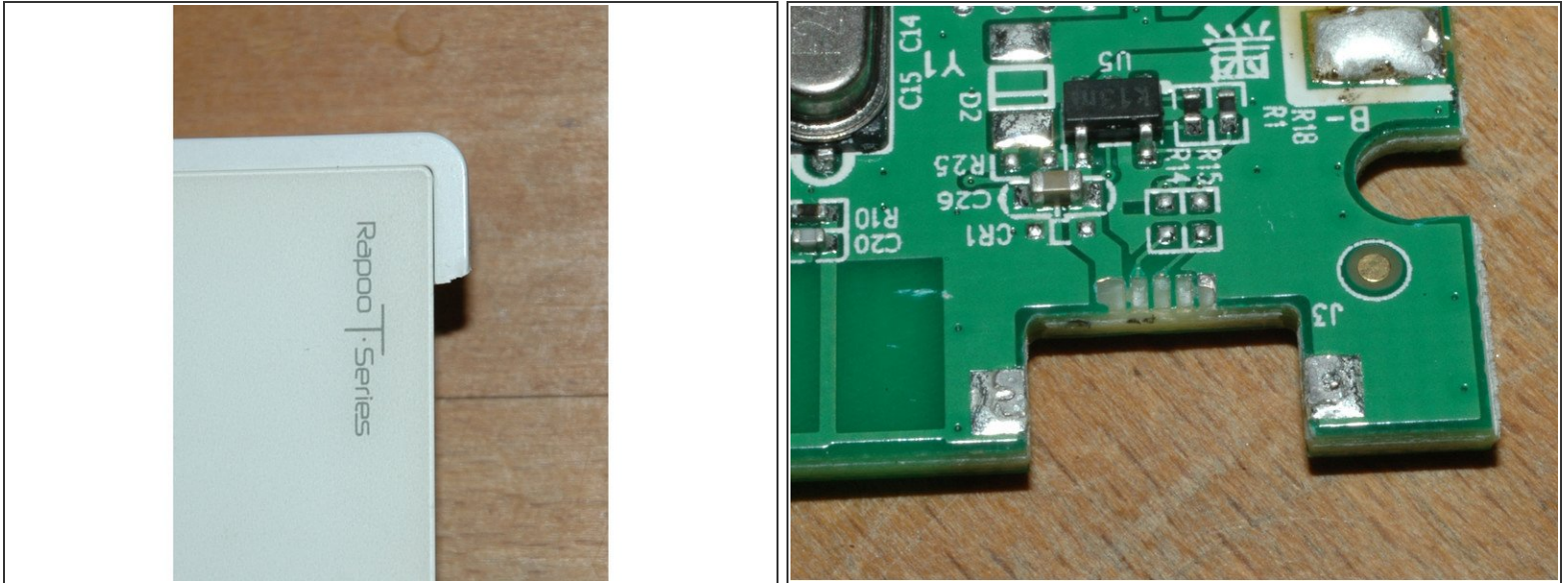


INTRODUCTION

Here I'm showing a repairability index of -1 aka bad design.

This Keyboard has been glued together not only with double sided tape but also with superglue making it impossible to repair. All I wanted was to replace the USB connector!

Step 1 — Rapoo E6700 Bluetooth Touch Keyboard Teardown



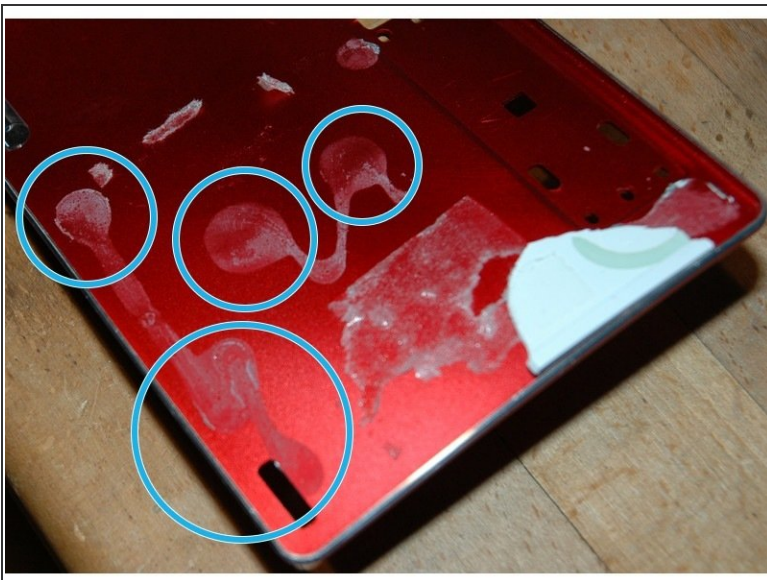
- A broken off micro-USB connector for charging a bluetooth keyboard doesn't seem like a challenge. But wait until you've tried with this one: Rapoo E6700 bluetooth keyboard.

Step 2



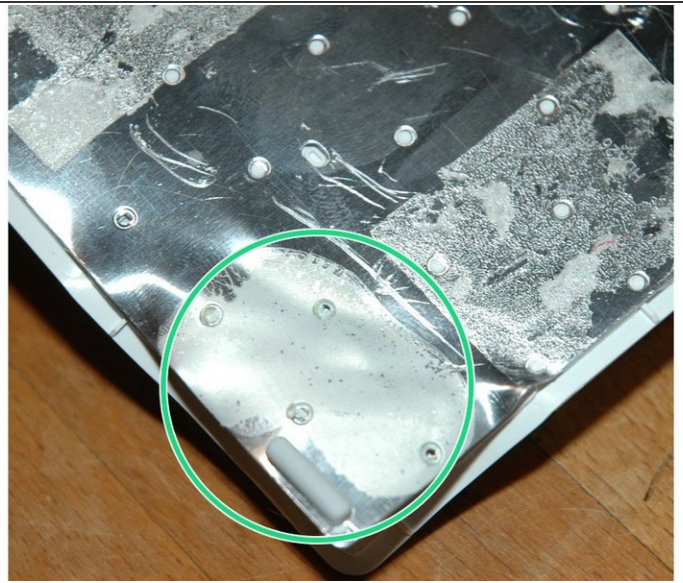
- I tried to get access to the damaged USB connector, but the bottom cover that contains the main PCB is held in place by screws not from the outside but the inside.
- So I broke off the bottom cover to repair the connector, but then you cannot connect back the flex connectors to the keyboard.
- Maby we can separate the keyboard from the aluminium housing ?

Step 3



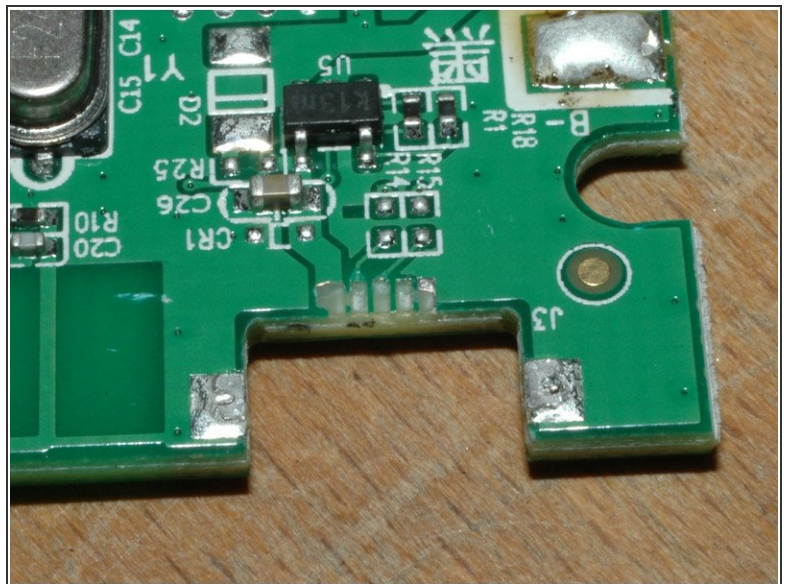
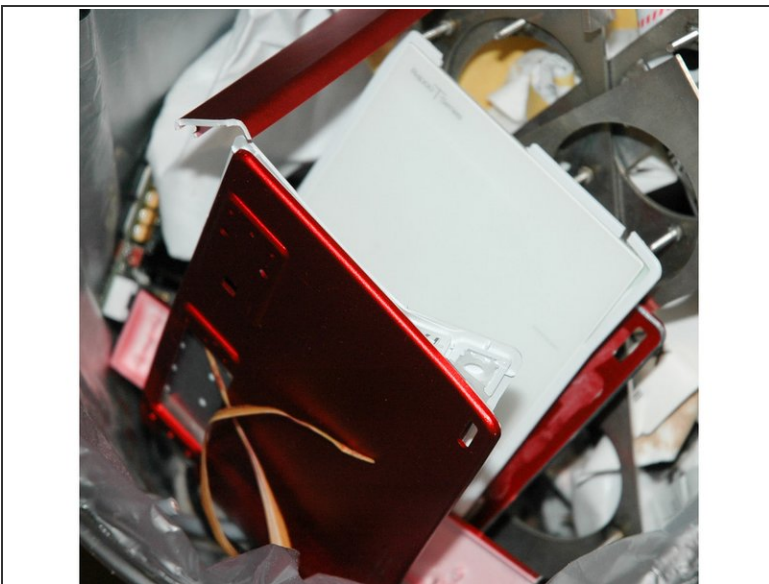
- Well for those who try to get the keyboard off, someone has developed superglue.
- Yes you heard it, not just sticky double sided tape, also superglue applied in the marked areas.

Step 4



- Here's the keyboard after 1 hour trying to separate the parts.
- And another view of the superglue residuals on the keyboard side.

Step 5



- This is the **'repaired'** keyboard
- and the only reason to repair: the broken off (badly soldered) USB connector.
- What a waste of materials

To reassemble your device, buy a new one

This document was last generated on 2019-07-15 03:35:41 AM.