



Nixon Watch Battery Replacement

Steps for replacing the battery for a Nixon Quatro wristwatch as well as time adjustment.

Written By: David Ratliff



INTRODUCTION

If your Nixon Watch needs a battery replacement, this guide will help if there is any question on how to replace the battery. This guide is specifically only for Nixon Watch. To replace the battery there's no special technical knowledge needed. The only thing that is needed is good lighting and a nice, flat area to keep the tiny screws in place.



TOOLS:

- [Phillips #00 Screwdriver](#) (1)
- [1.5 mm Flathead Screwdriver](#) (1)



PARTS:

- [Isopropyl Alcohol Wipes](#) (1)
- [SR66 Watch Battery](#) (1)

Step 1 — Battery



- On a flat surface, use the PH00 screwdriver to remove the four screws from each corner, and set them in a safe place.

Step 2



- Gently lift the back plate, and be careful to not damage the rubber gasket.

Step 3



- Use the 1.5 flathead, and carefully pry the battery out of the housing.
- ⚠ The battery is under spring tension and may fly out.

Step 4



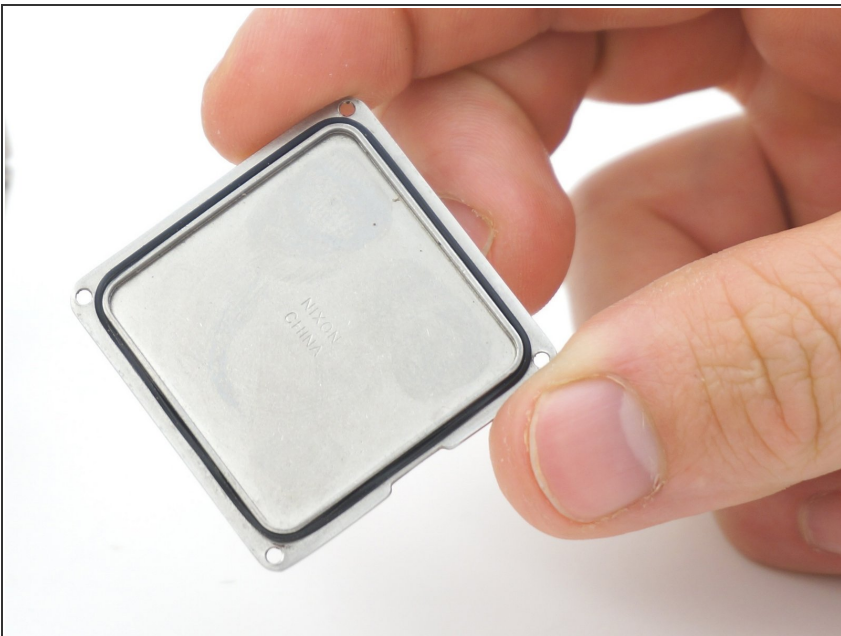
- Place the new battery in the battery housing. Ensure the positive side is facing up.
- Ensure the battery is firmly seated. A faint click can be heard when it is firmly seated.

Step 5



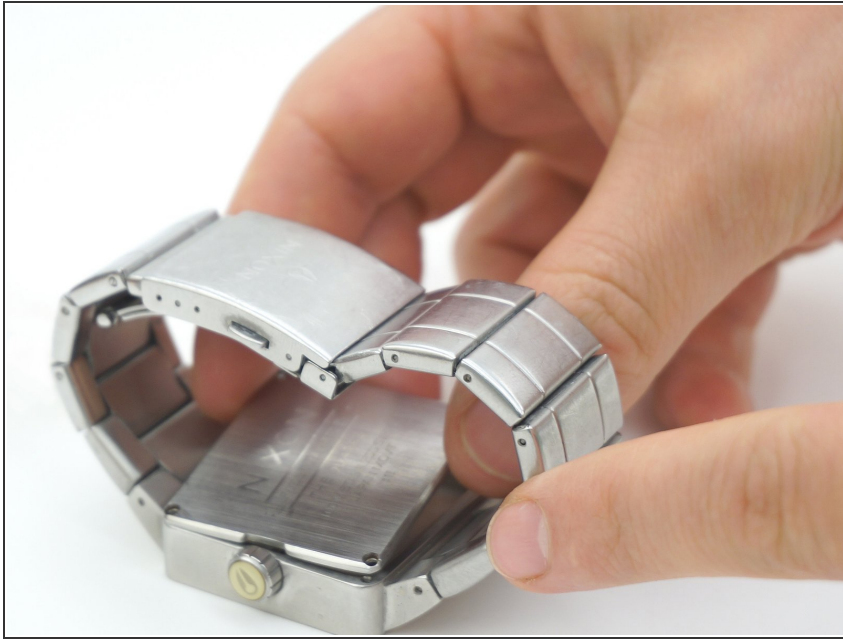
- Remove the rubber gasket from the back plate.
- Use an alcohol wipe to clean the back plate and the watch housing where the gasket will sit. This will ensure a clean and an airtight fit.

Step 6



- Seat the gasket back onto the back plate.

Step 7



- Place the back plate back onto the main watch housing. Ensure the notch in the back plate is line up with the crown.

Step 8



- Tighten screws in a star pattern until the backplate is tight.

Step 9



- Pull the crown away from the watch and then turn the knob to set the time.
- Pull the crown away from the watch and then turn the knob to set the time.

You have successfully completed the battery replacement on your wristwatch.

If the second hand doesn't begin its rotation there is one of two common problems. The first is that the crown has not been properly engaged after the time adjustment on steps 11 and 12. The second problem would be caused by a bad battery in which case you would need to repeat the steps over with another new battery.

If the problem persists contact the manufacturer for further troubleshooting steps.