



HP Mini 1000 WWAN Board Replacement

Written By: Walter Galan



INTRODUCTION

This guide is used as a prereq to other guides. (1st for motherboard)

TOOLS:

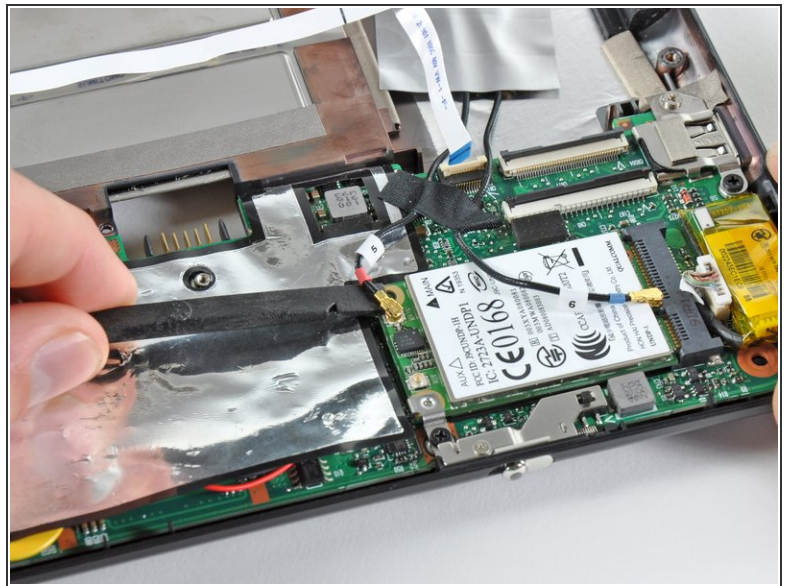
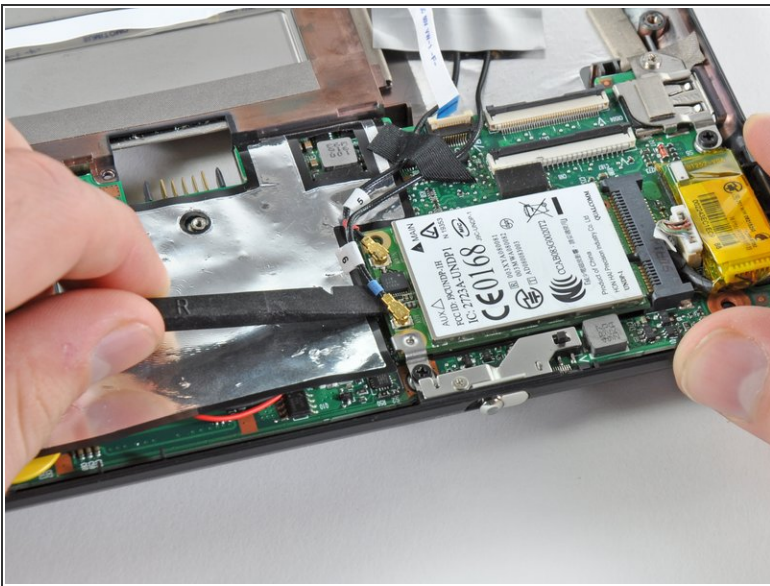
- [Spudger](#) (1)
 - [Phillips #00 Screwdriver](#) (1)
-

Step 1 — WWAN Board



- i If present, carefully peel the piece of tape covering the WWAN board.

Step 2



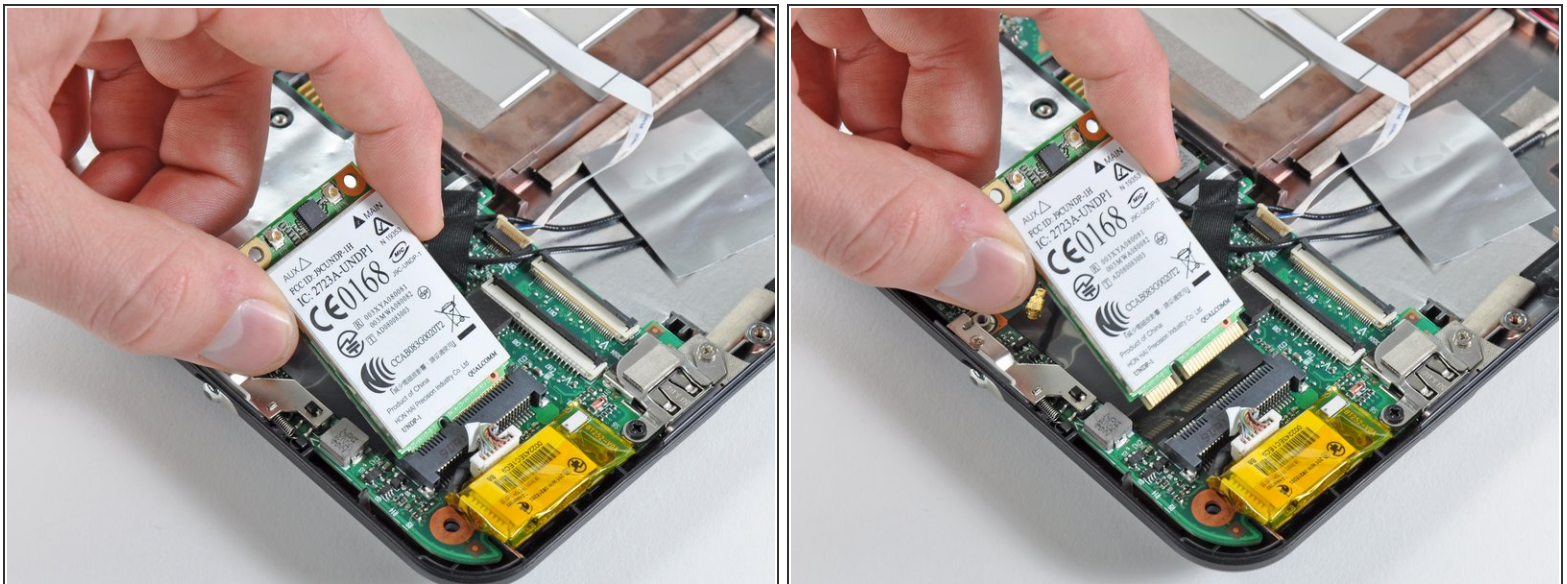
- Pry the WWAN antenna connectors (2 total) up off the WWAN board.
- ✚ During reassembly, remember to correctly connect the antenna cables to their respective terminals. The red labeled antenna is connected to the **"MAIN"** terminal and the blue labeled antenna is connected to the **"AUX"** terminal.

Step 3



- Remove the single 3 mm Phillips screw securing the WWAN metal bracket and WWAN board to the motherboard.
- 👉 During reassembly, before securing the WWAN board to the upper case, be sure the metal bracket is correctly placed (as highlighted in the second picture).
- ⚠ Be cautious of the metal bracket's displacement. It can easily become lost during disassembly.

Step 4



- 📄 Upon removing the Phillips screw that secures the WWAN board to the motherboard, the WWAN board should pop up from its left side.
- Grasp the WWAN board and pull it straight out of its socket on the motherboard.

This document was generated on 2020-03-29 08:58:02 PM (MST).

To reassemble your device, follow these instructions in reverse order.