



HP Mini 1000 PRAM Battery Replacement

Written By: Walter Galan



INTRODUCTION

This guide is used as a prereq to other guides. (3rd for motherboard)

TOOLS:

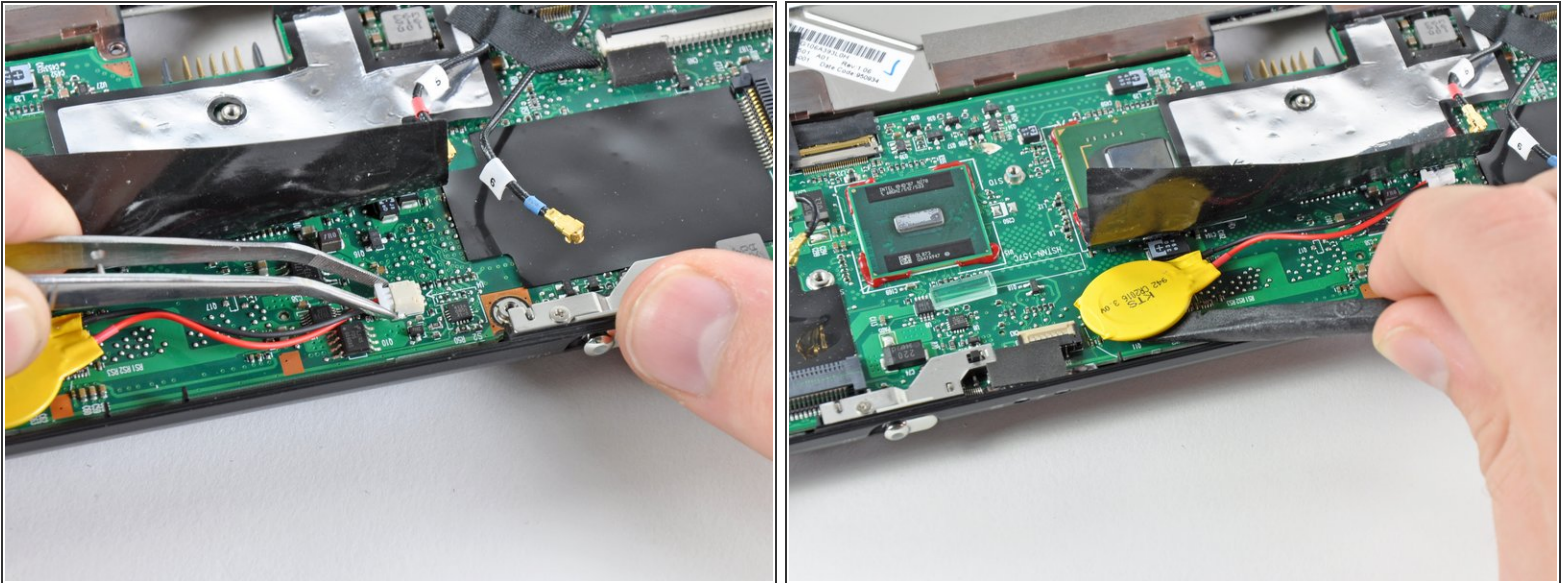
- [Tweezers](#) (1)
-

Step 1 — PRAM Battery



- ⓘ If present, carefully peel back the piece of black film attached to the heat sink to reveal the PRAM battery and its cable.

Step 2



- Use a pair of tweezers to pull the PRAM battery connector out of its socket on the motherboard.
- ⓘ Pull the connector parallel to the face of the motherboard toward the fan side of the computer.
- Use the flat end of a spudger to pry the PRAM battery off the adhesive securing it to the motherboard.
- Remove the PRAM battery.

To reassemble your device, follow these instructions in reverse order.