



# HP Mini 1000 Camera Board Cable Replacement

Written By: Walter Galan



---

## INTRODUCTION

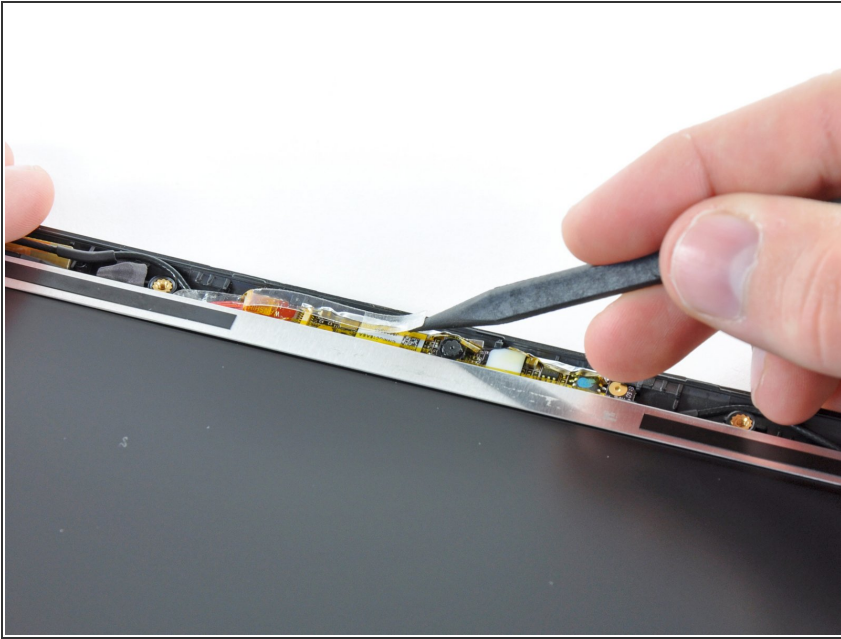
This guide is an internal prereq only.

---

### TOOLS:

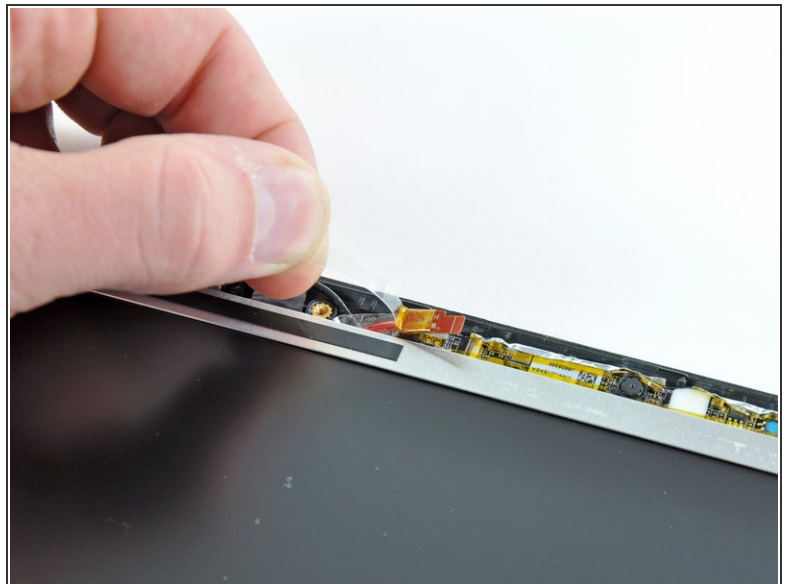
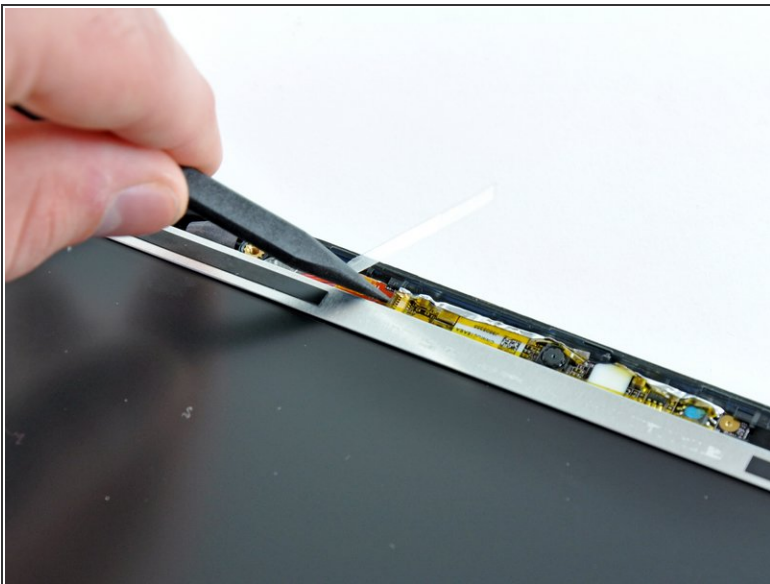
- [Spudger](#) (1)
-

## Step 1 — Camera Board Cable




- Use the sharp end of a spudger to flip up the plastic flap that rests on top of the camera board cable ZIF socket.

## Step 2



- Use your fingernail or the sharp end of a spudger to flip up the retaining flap on the camera board cable ZIF socket.

 Be sure you are prying up on the retaining flap, not the socket itself.

- Pull the camera board ribbon cable out of its socket.

This document was generated on 2019-10-23 03:33:57 AM (MST).

To reassemble your device, follow these instructions in reverse order.