



Samsung Galaxy S6 SIM Card Replacement

Replace the SIM card in a Galaxy S6

Written By: Evan Noronha



INTRODUCTION

Use this guide to replace the SIM card in your Galaxy S6.



TOOLS:

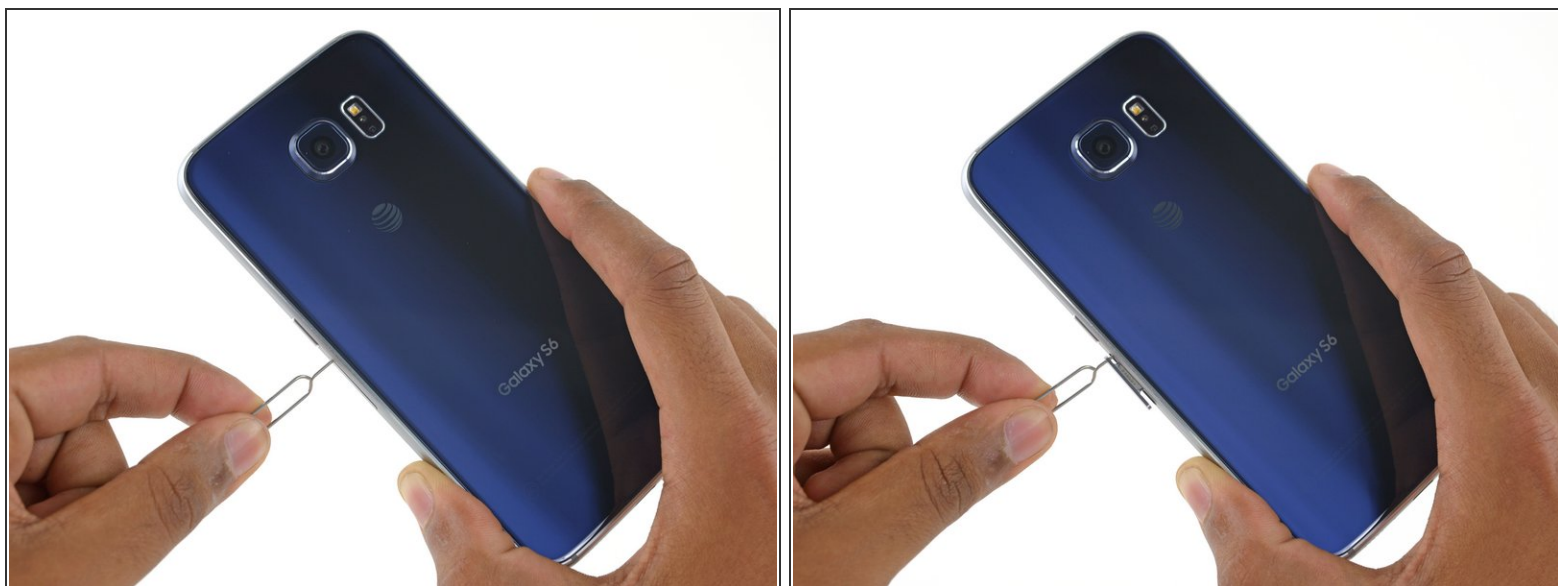
- [SIM Card Eject Tool](#) (1)




PARTS:

- [Galaxy S6 SIM Card Tray](#) (1)

Step 1 — SIM Card



- Insert a paper clip or SIM eject tool into the hole in the SIM card slot on the power button side of the phone.
- Press to eject the SIM card tray.
 Don't press too hard or you may damage the SIM card tray.

Step 2



- Remove the SIM card tray from the phone.

To reassemble your device, follow these instructions in reverse order.