



# Samsung Exhibit II 4G Battery Replacement

Replace the Battery in your Samsung Exhibit II 4G.

Written By: David R



## INTRODUCTION

Use this guide to replace a defective battery.



### TOOLS:

- [iFixit Opening Tools](#) (1)



### PARTS:

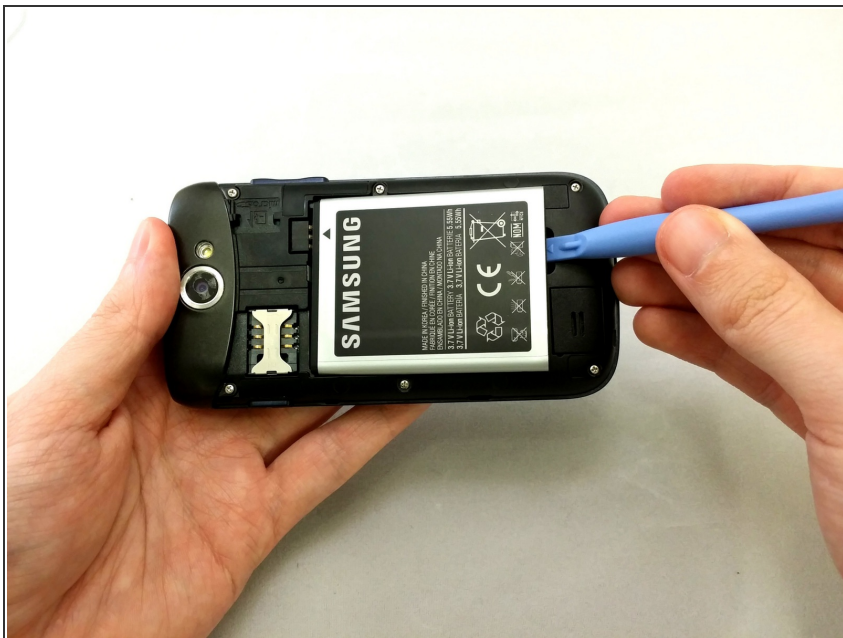
- [Samsung Replacement Battery EB484659VA](#) (1)

## Step 1 — Battery



- Insert plastic opening tool under back cover.
- Apply pressure on tool while using a downward motion to pop off back cover.

## Step 2



- Insert plastic opening tool under battery.
- Pry battery out.

To reassemble your device, follow these instructions in reverse order.

This document was last generated on 2017-06-18 04:28:11 PM.