



# PowerBook G4 Aluminum 17" 1.67 GHz (High-Res) Rear Display Bezel Replacement

Replace a damaged rear display bezel on your PowerBook G4 Aluminum 17" 1.67 GHz (High-Res).

Written By: Andrew Bookholt



---

## INTRODUCTION

Use this guide to replace a damaged rear display bezel.

---

### TOOLS:

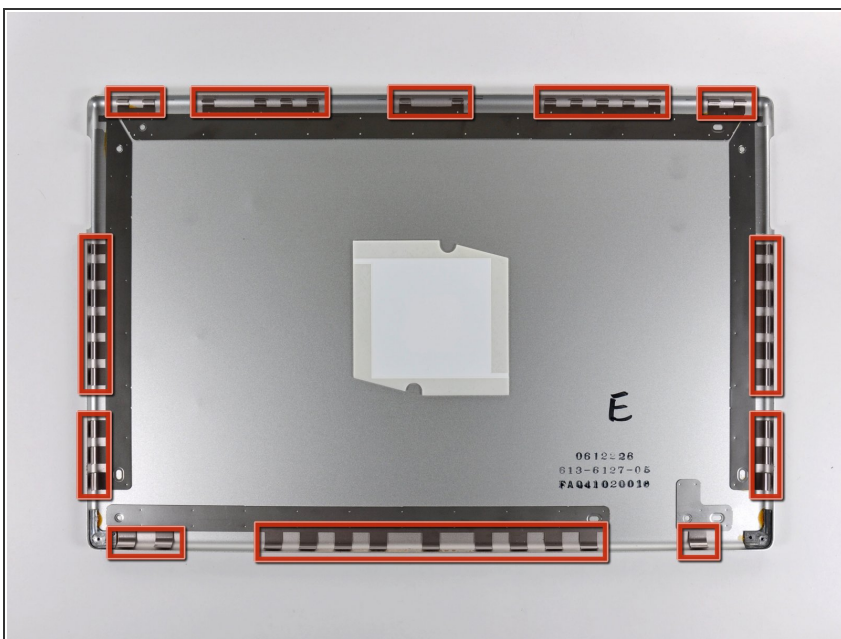
- [Phillips #00 Screwdriver](#) (1)
  - [Flathead 3/32" or 2.5 mm Screwdriver](#) (1)
  - [Spudger](#) (1)
-

## Step 1 — Rear Display Bezel




- Remove the two 6.3 mm Phillips screws near the lower left and right corners of the display.
- ⓘ Removing these two screws may be difficult. It is helpful to open the display as much as possible for clearance to use a screwdriver. Also, a combination of #00 Phillips and small flathead screwdrivers along with a pair of tweezers may aid in removal.

## Step 2




- ⓘ The picture at left (rear panel already removed) shows the locations of the metal clips (shown in red) that snap on to the front display bezel. In the next few steps, you will use a small flathead screwdriver to release these clips from a ridge around the perimeter of the front display bezel.

 When prying in the following steps, be sure not to damage the antenna cables that run around the perimeter of the front display bezel.

### Step 3



- Insert the flat end of a spudger between the rear display bezel and the plastic rim attached to the front display bezel near the lower right corner of the display.

 **Do not** try to insert the spudger between the front display bezel and its plastic surround.

- While carefully prying the rear display bezel away from the display assembly, use a small flathead screwdriver to pry the small steel clip nearest the bottom right corner of the display away from the edge of the front display bezel.
- Repeat the above procedure until you've released all the clips along the right side of the display.

## Step 4



- Slightly lift the recently-freed corner of the rear display bezel to separate the clips with a spudger along the span of the clutch hinges.

## Step 5



- Insert the flat end of a spudger between the rear display bezel and the plastic surround of the front display bezel near the lower left corner of the display.
- Carefully pry the rear display bezel away from the front display bezel to expose the metal clips along the left side of the display.
- Repeat the previous procedure to release the clips along the left side of the rear display bezel.

## Step 6



- Slightly lift the lower edge of the rear display bezel and push it toward the top edge of the display, releasing the clips along the top edge of the rear display bezel.
- Remove the rear display bezel and set it aside.

To reassemble your device, follow these instructions in reverse order.

This document was last generated on 2019-07-11 01:46:06 PM.