



# How To Tear Down Samsung Galaxy S6 Edge Plus

This is a tutorial guide about how to tear down the Galaxy S6 Edge Plus.

Written By: Mandy



---

## INTRODUCTION

This is a tutorial guide from [How2Tech](#) about how to tear down the Galaxy S6 Edge Plus.

[video: [https://www.youtube.com/watch?v=0uMKE\\_UEFV4](https://www.youtube.com/watch?v=0uMKE_UEFV4)]

---

### TOOLS:

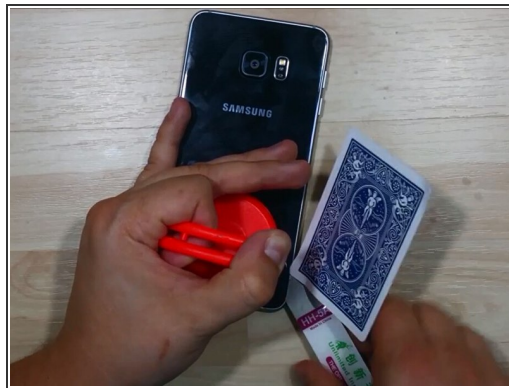
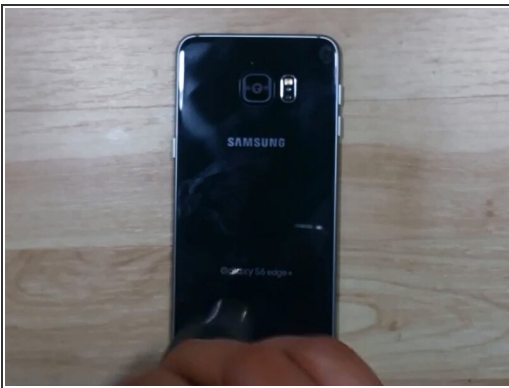
- [Heat Gun](#) (1)
  - [iSesamo Opening Tool](#) (1)
  - [Essential Electronics Toolkit](#) (1)
  - [Plastic Cards](#) (1)
-

## Step 1 — Remove the SIM card tray.



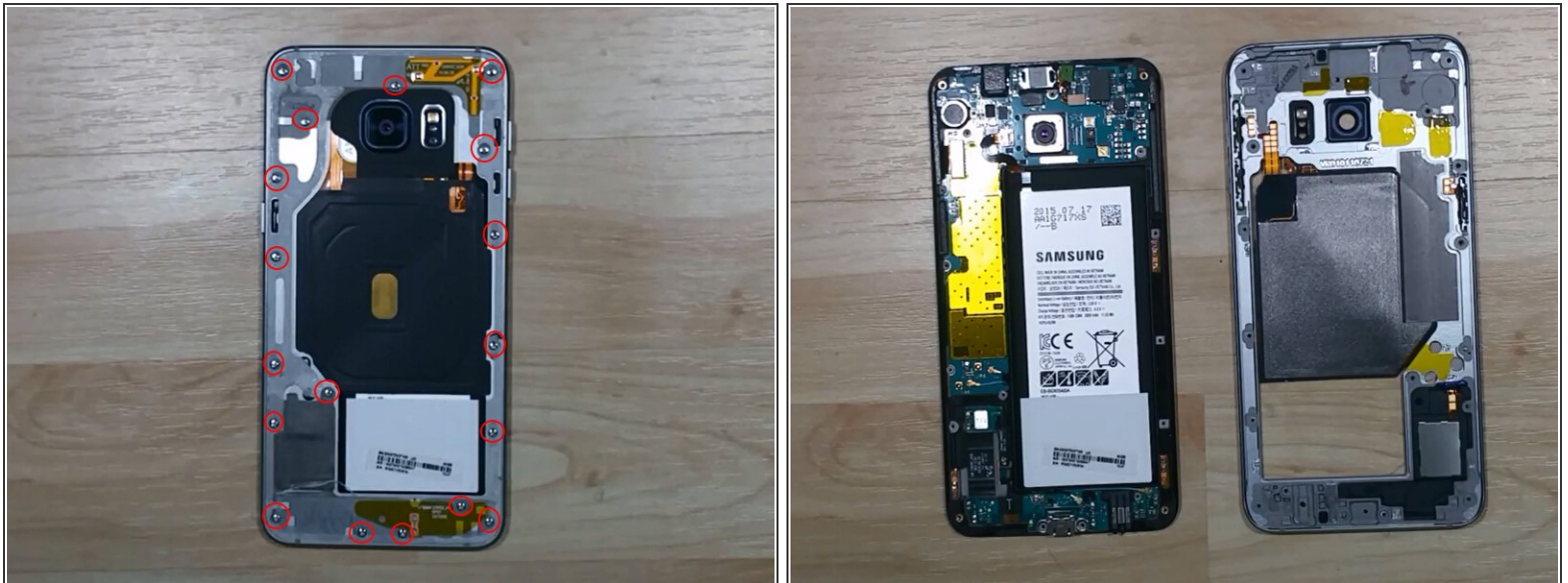
- Power off the Galaxy S6 Edge Plus and remove the SIM card tray.

## Step 2 — Remove the back cover.



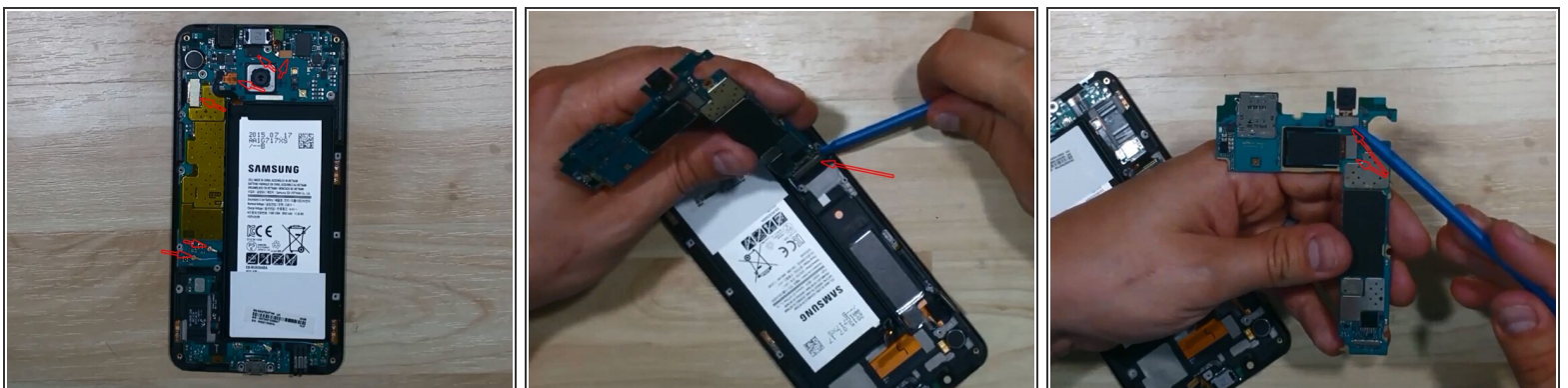
- Heat up to soften the adhesive around the back cover.
- Pull up a gap to insert the prying tool and a poker card.
- Run the poker card and case opening tool around the edges to separate the back cover.

### Step 3 — Release the rear housing.



- Undo the 18 screws in the rear housing.
- Pull up the rear housing from LCD assembly with frame.

### Step 4 — Release the motherboard.



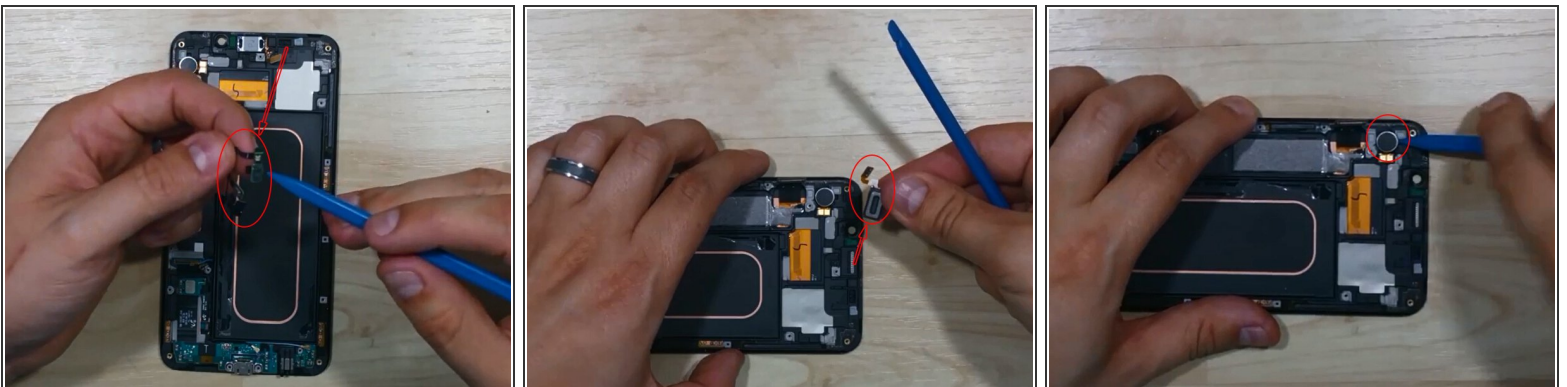
- Pry up the screen flex connector, battery flex connector, ear speaker flex connector and proximity sensor flex connector.
- Pry up the motherboard and turn it upside down to release the connector behind.
- Pry up the connectors on the motherboard to release the front facing and rear facing camera if necessary.

## Step 5 — Release the battery. (Be extremely patient and gentle.)



- Pry up around the edges of battery as there're two main adhesive sticker underneath.
- Insert the Spudger to pry up the adhesive.
- Tear the battery by hands.

## Step 6 — Release the small parts assembled in the front frame.



- Pry up to release the proximity sensor module.
- Pry up to release the ear speaker.
- Pry up to release the vibrating motor.

## Step 7 — Galaxy S6 Edge Plus charging port assembly.



- As stated by the video, the charging port flex ribbon assembly cannot be removed until the front glass is torn down as it's assembled with the navigator flex in between the glass and LCD.