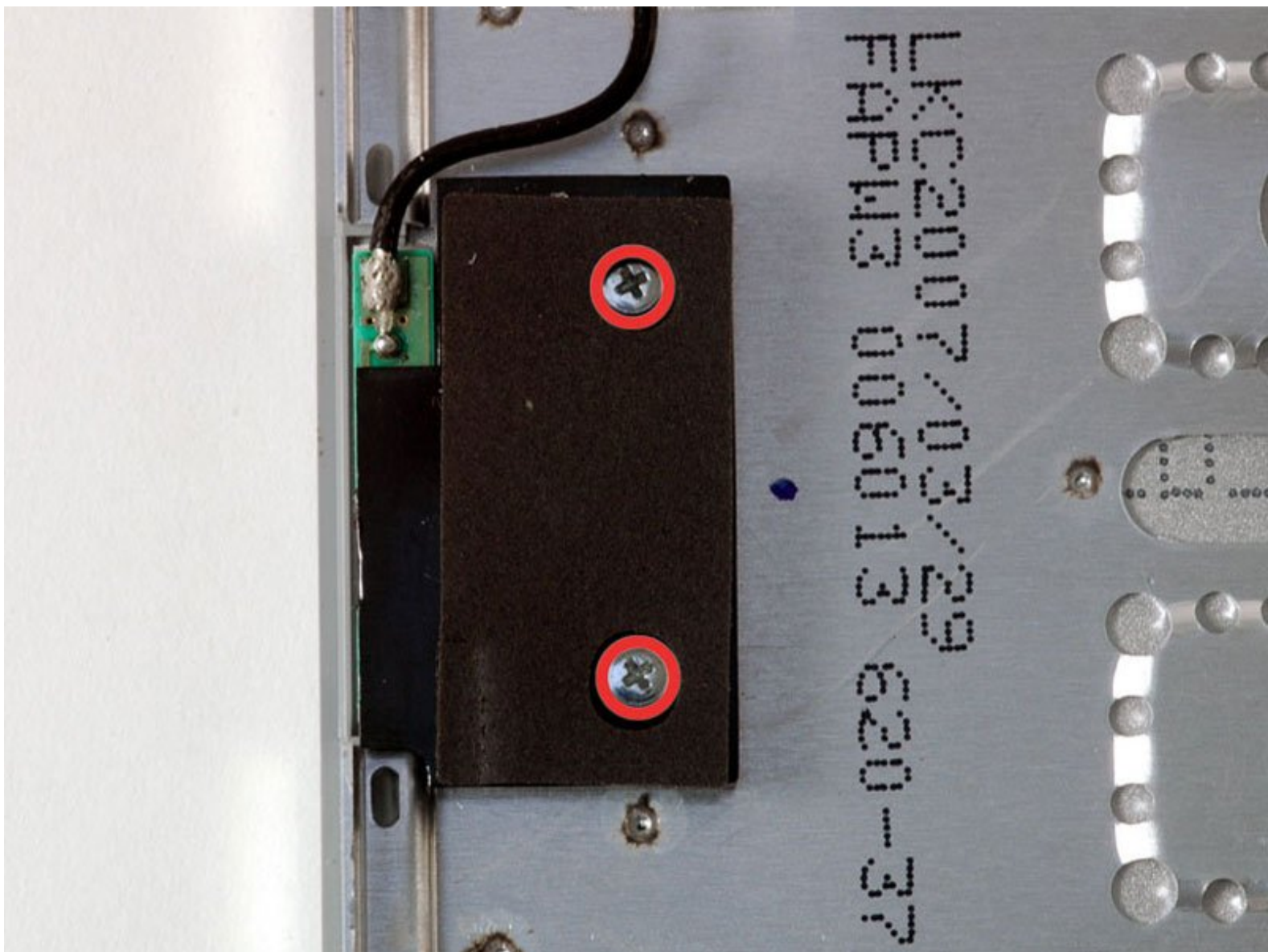




MacBook Pro 15" Core 2 Duo Model A1211 Bluetooth Antenna Replacement

Written By: iRobot



INTRODUCTION

Replace the Bluetooth board.



TOOLS:

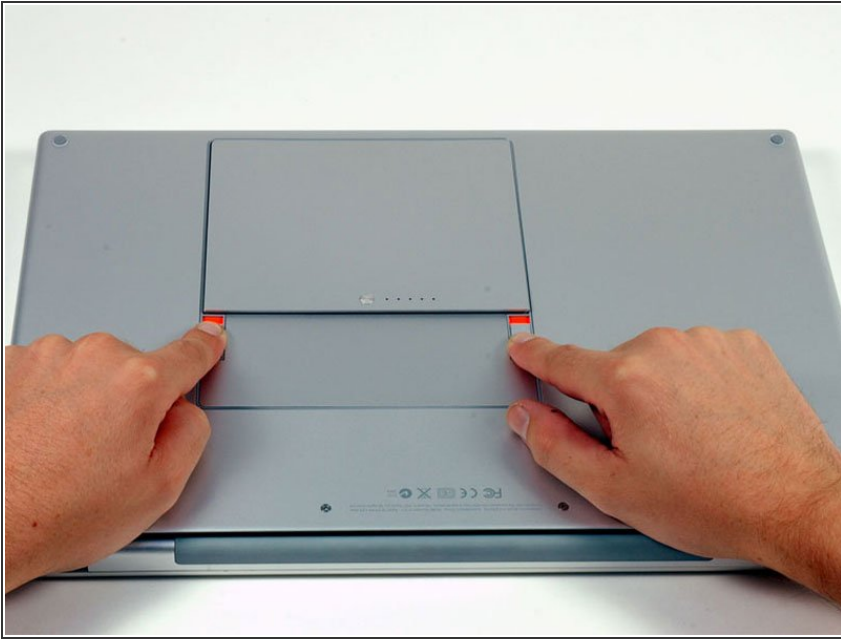
- [Phillips #00 Screwdriver](#) (1)
- [Spudger](#) (1)
- [T6 Torx Screwdriver](#) (1)



PARTS:

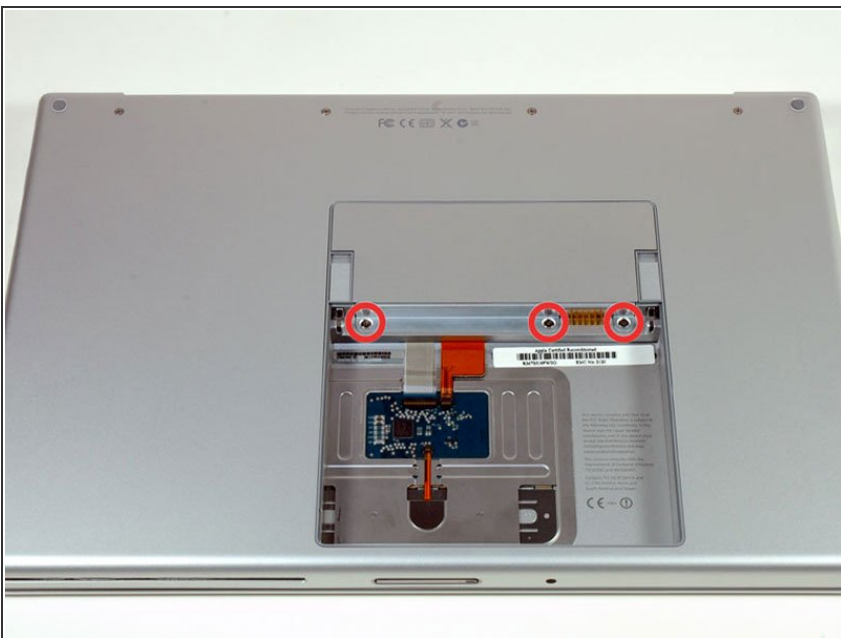
- [MacBook Pro 15" \(Models A1221/A1226/A1260\) Bluetooth Antenna](#) (1)

Step 1 — Battery



- Use your fingers to push both battery release tabs away from the battery, and lift the battery out of the computer.

Step 2 — RAM Shield



- Remove the three identical Phillips screws from the memory door.

Step 3



- Lift the memory door up enough to get a grip on it, and slide it toward you, pulling it away from the casing.

Step 4 — Upper Case



- Remove the two 2.8 mm Phillips screws in the battery compartment near the latch.

Step 5



- Remove the following 6 screws:
 - Two 10 mm T6 Torx screws on either side of the RAM slot.
 - Four 14.5 mm Phillips screws along the hinge.

Step 6



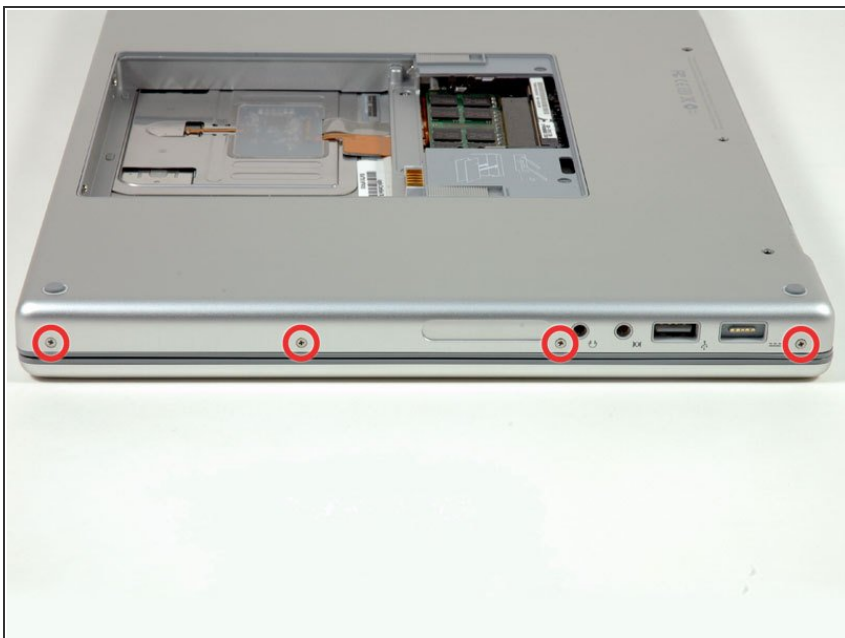
- Remove the four 3.2 mm Phillips screws on the port side of the computer.

Step 7



- Rotate the computer 90 degrees and remove the two 3.2 mm Phillips screws from the rear of the computer.

Step 8



- Rotate the computer 90 degrees again and remove the four 3.2 mm Phillips screws from the side of the computer.

Step 9



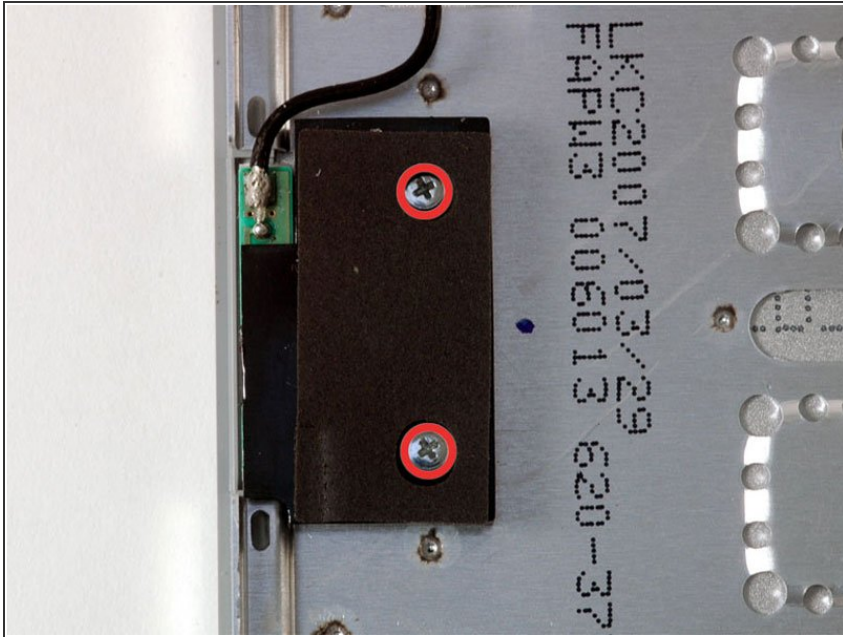
- ⓘ Do not yank the upper case off quickly. The case is attached to the logic board via a ribbon cable.
- Lift up at the rear of the case and work your fingers along the sides, freeing the case as you go. Once you have freed the sides, you may need to rock the case up and down to free the front of the upper case (there are some hidden plastic clips that need to be clicked off).

Step 10



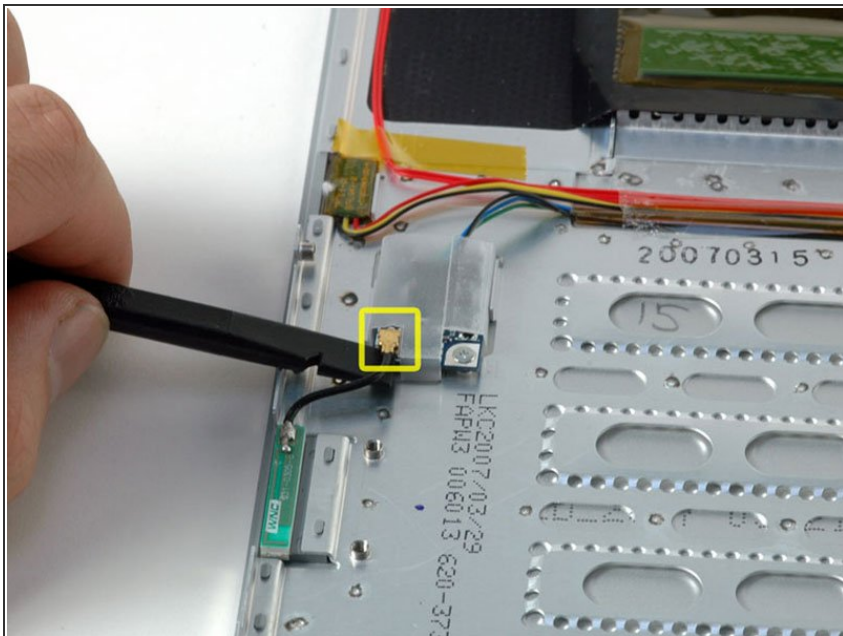
- Disconnect the trackpad and keyboard ribbon cable from the logic board, removing tape as necessary.
- Remove the upper case.

Step 11 — Bluetooth Antenna



- Remove the two Phillips screws securing the black antenna holder to the upper case.
- Lift the black Bluetooth antenna holder off of the upper case.

Step 12



- Disconnect the Bluetooth antenna cable from the Bluetooth board.

Step 13



- Lift the Bluetooth antenna out of its housing in the upper case. The Bluetooth antenna is secured to the upper case with an adhesive, so rocking the antenna board from side to side may help it come free easier.

To reassemble your device, follow these instructions in reverse order.