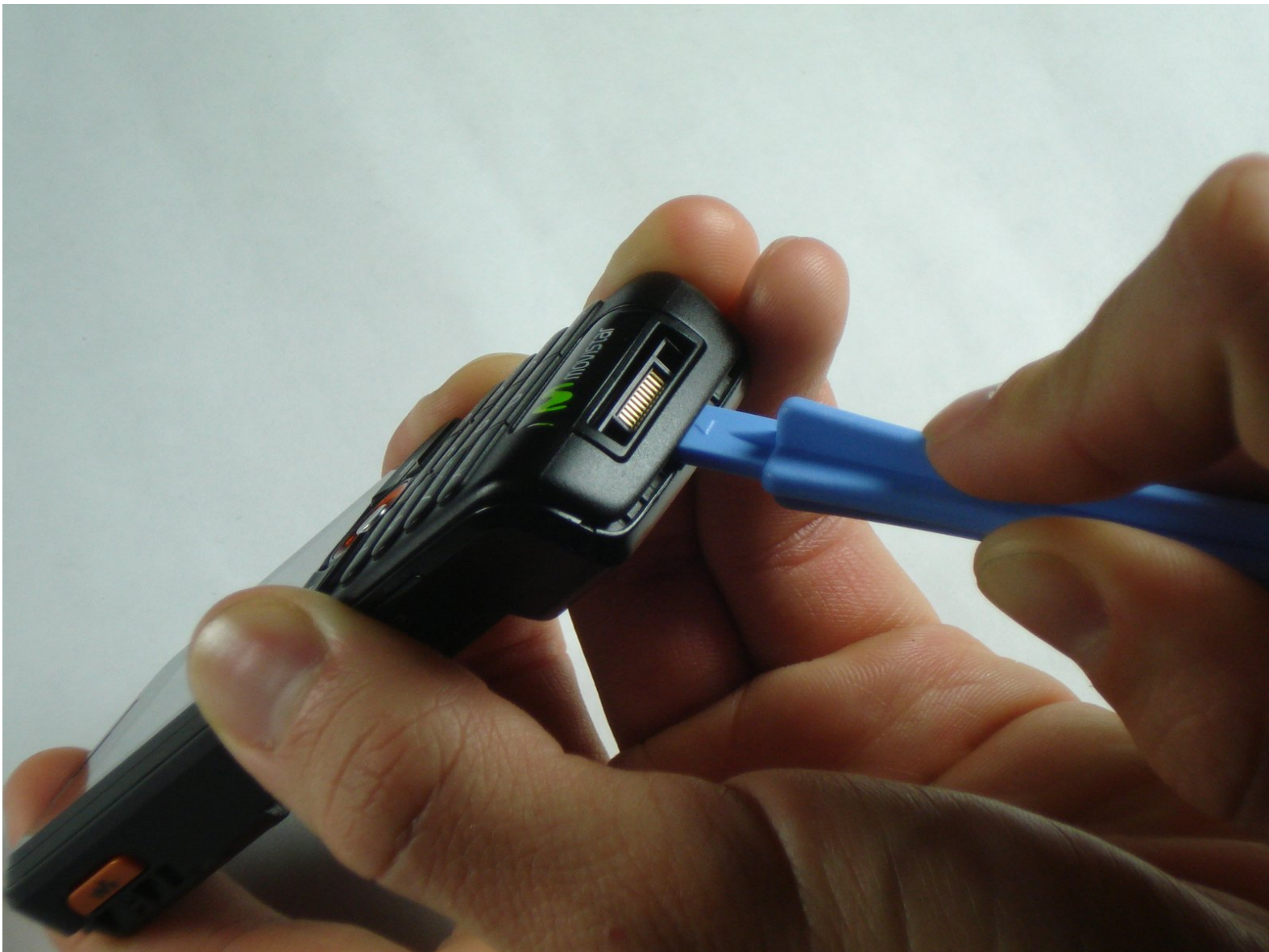




Sony Ericsson W200i Front Case Replacement

Guide to remove the front casing of the Sony Ericsson W200i.

Written By: Emily Prescott



INTRODUCTION

Removing the front case is easy, just be careful when you take it off.

TOOLS:

- [iFixit Opening Tools](#) (1)
-

Step 1 — Front Case



- Insert the plastic opening tool in between the front case and the back case.
 - Apply downward pressure to make the case lift upwards, thus popping the front case off.
- ⚠ Use caution when removing the front case. It may seem stuck but just ease it out.

To reassemble your device, follow these instructions in reverse.

This document was last generated on 2019-07-20 07:22:56 PM.