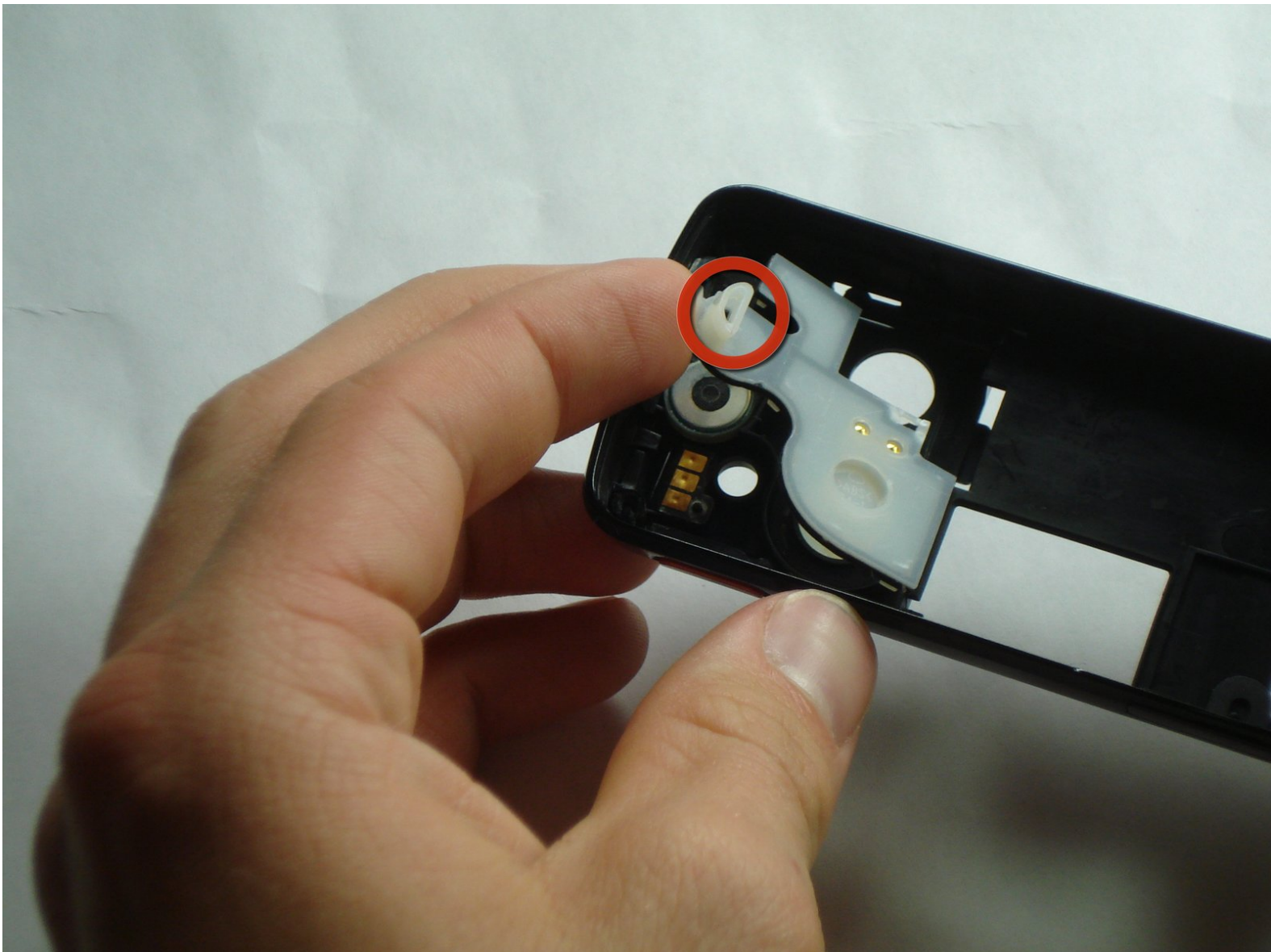




Sony Ericsson W200i Back Case Replacement

Replacing the case of the Sony Ericsson W200i.

Written By: Emily Prescott



INTRODUCTION

Replacing the case is fairly easy, there will be small parts you will be removing so make sure you have a place to put them for safe-keeping.

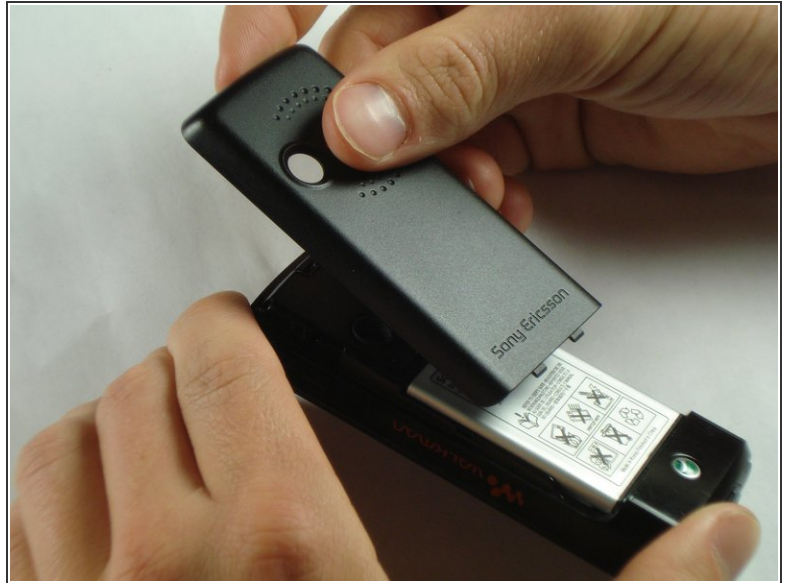
TOOLS:

- [iFixit Opening Tools](#) (1)
- [T6 Torx Screwdriver](#) (1)
- [Tweezers](#) (1)

PARTS:

- [Sony Ericsson W200i Case](#) (1)

Step 1 — Disassembling Sony Ericsson W200i Battery



- Slide the battery cover up and off the phone.

Step 2



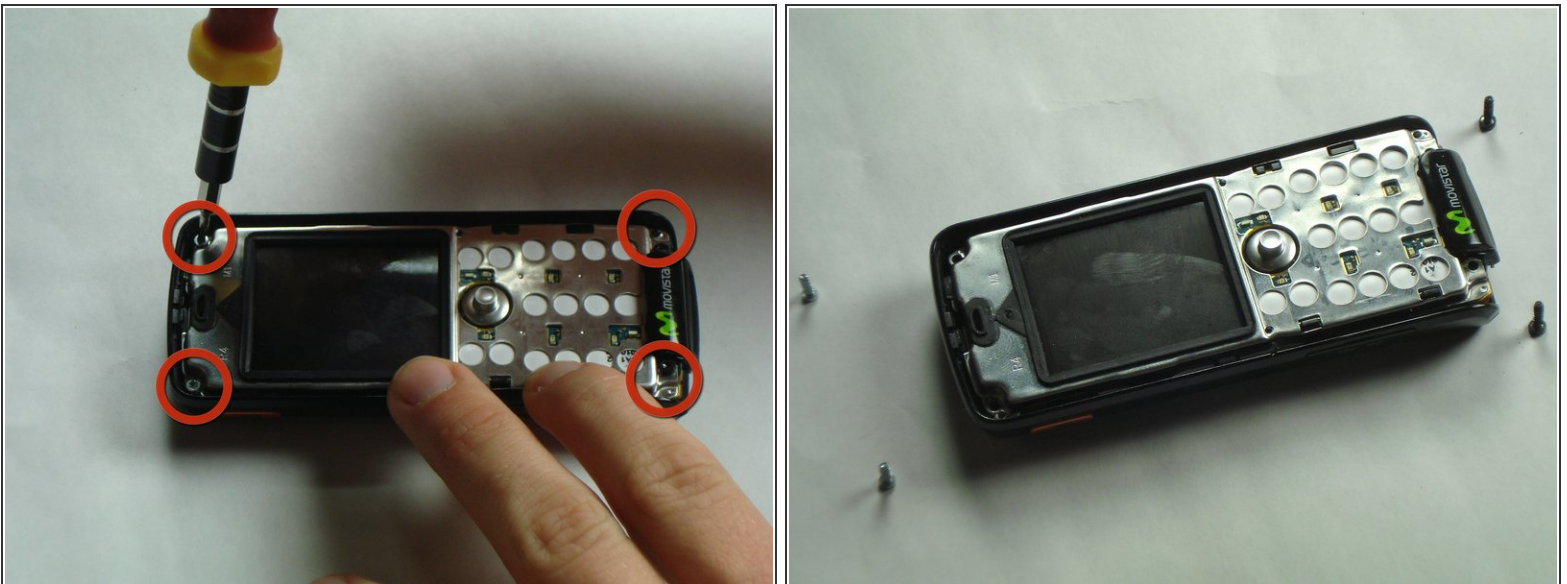
- Pop the battery out of its slot by lifting it up.

Step 3 — Front Case



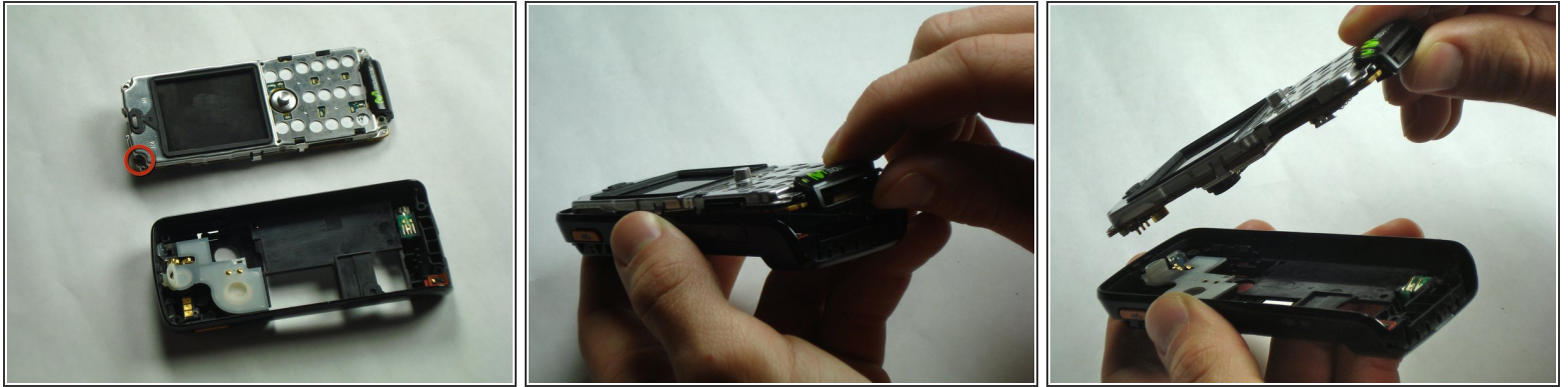
- Insert the plastic opening tool in between the front case and the back case.
 - Apply downward pressure to make the case lift upwards, thus popping the front case off.
- ⚠ Use caution when removing the front case. It may seem stuck but just ease it out.

Step 4 — Core



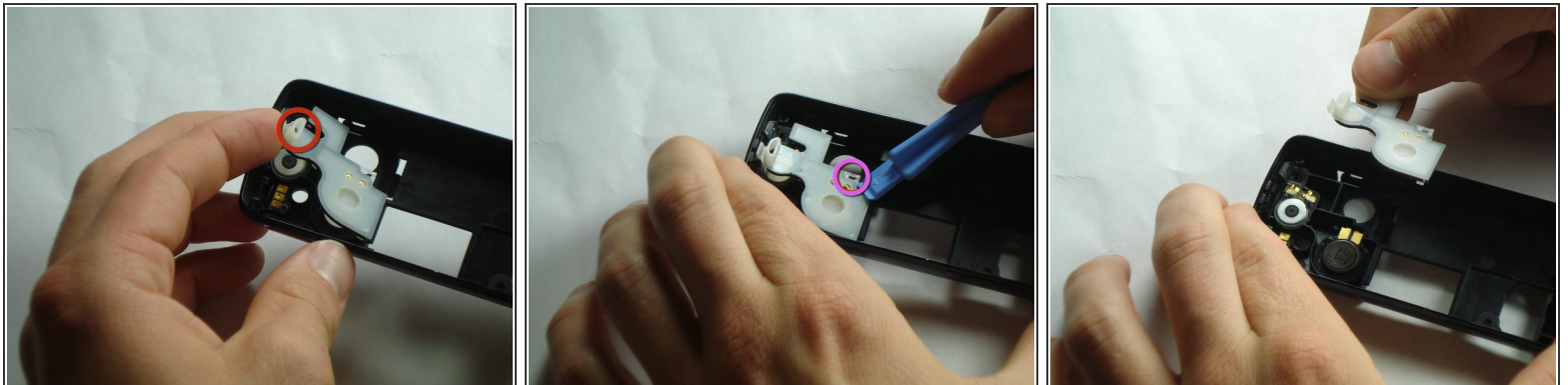
- Remove the 4 screws in the corners of the front of the phone using a T6 screwdriver.
- ⓘ Note that the top 2 screws are silver and the bottom 2 screws are black.

Step 5



- There is a black tab in the top left corner holding the core in place.
- Remove the core by pulling straight up to prevent breaking the tab.

Step 6 — Back Case



- Pull back on the indicated tab of the white plastic cover to unhook it from the top of the phone.
- Using the plastic opening tool, undo the indicated clip on the bottom of the white plastic cover.
- Remove the white plastic cover.

To reassemble your device, put removed pieces into the new back casing, then follow the steps in reverse order.

This document was last generated on 2019-07-16 01:07:20 PM.