



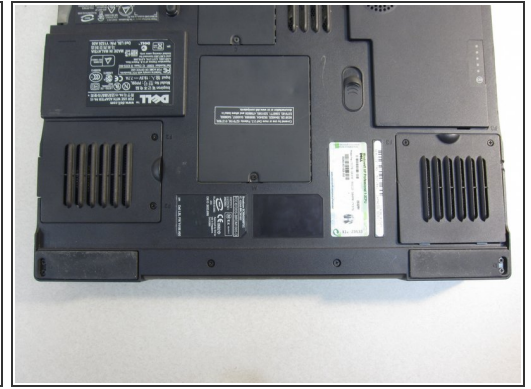
Dell Inspiron 9100 Optical Drive/Accessory Device Replacement

Remove CD/DVD drive, floppy drive, or secondary battery.

Written By: charlierefvem



Step 1 — Battery



- Unplug the laptop from the power adapter and turn the power off.

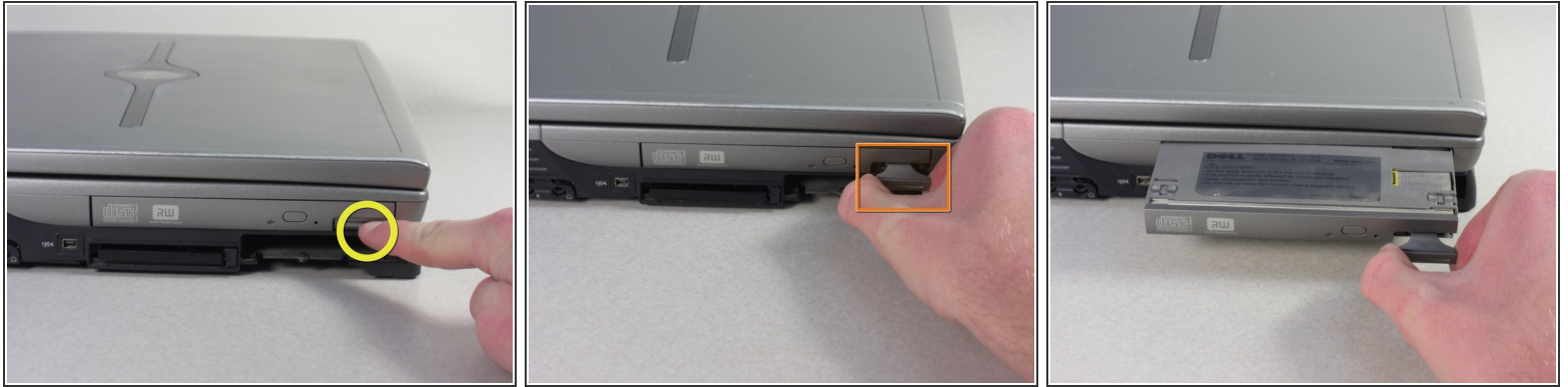
 Failure to unplug laptop before proceeding could result in risk of electric shock!

Step 2



- Slide the battery-lock tab and hold.
- Flip the battery away from the chassis to remove it.

Step 3 — Optical Drive/Accessory Device



- Press the tab on the outside face of the optical drive to release a handle.
- Pull the handle to eject the optical drive unit from the slot, and slide it out.

To reassemble your device, follow these instructions in reverse order.

This document was last generated on 2019-07-20 12:46:30 AM.