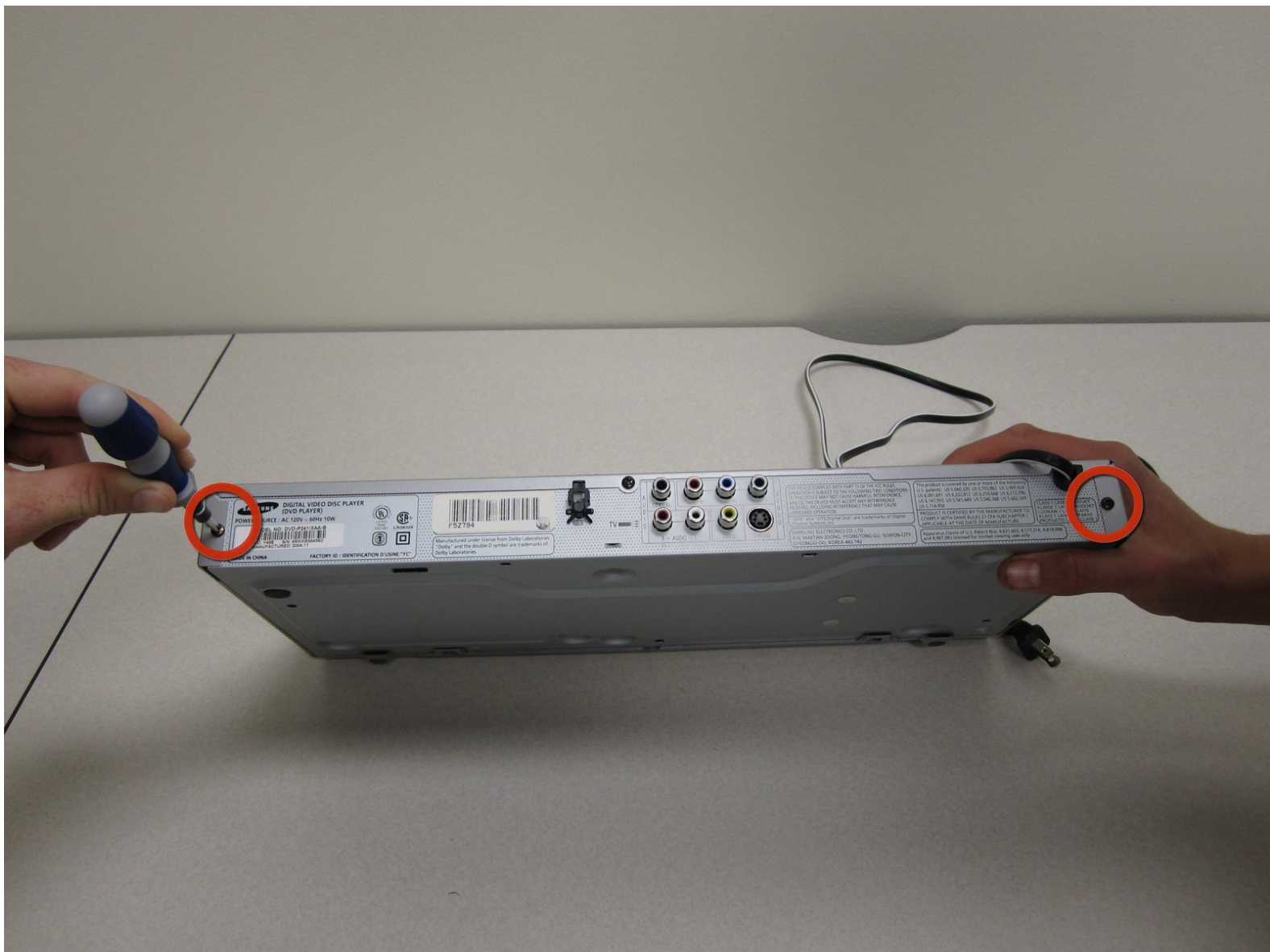




Samsung P241 Top Case Replacement

This guide shows you how to take the top cover off the DVD player to get to the components inside.

Written By: Sarah Wachtfogel



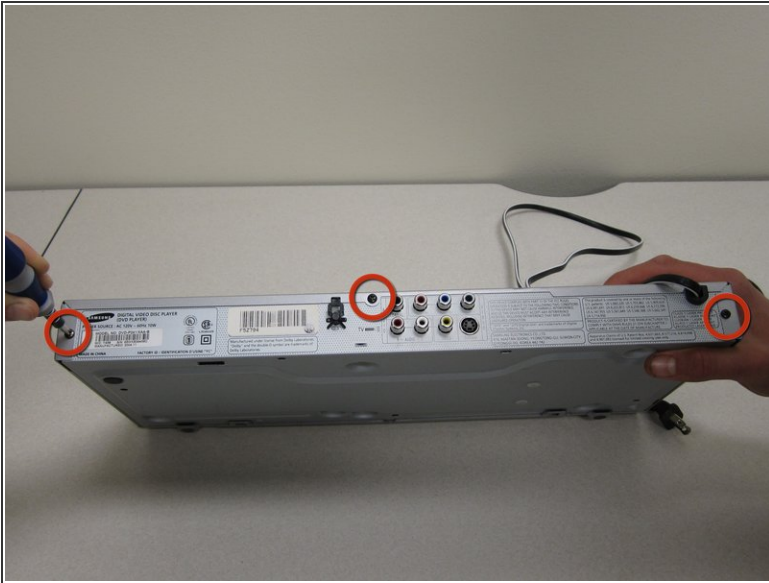
INTRODUCTION

Make sure you look at the [Samsung P241 Troubleshooting Guide](#) first to see if you can solve your problem without taking the DVD player apart.

TOOLS:

- [Phillips #1 Screwdriver](#) (1)
-

Step 1 — Top Case



i You will need to be near a power source for this guide.

- With the back of the DVD player facing you, remove the three 1 cm black screws on the right, left, and top sides using a Phillips #1 screwdriver.

Step 2



- Pull the top cover towards you until you can lift it up and off.

To reassemble your device, follow these instructions in reverse order.