



# Canon Powershot SD880 Top Panel Replacement

Written By: Robert Manno



 **TOOLS:**

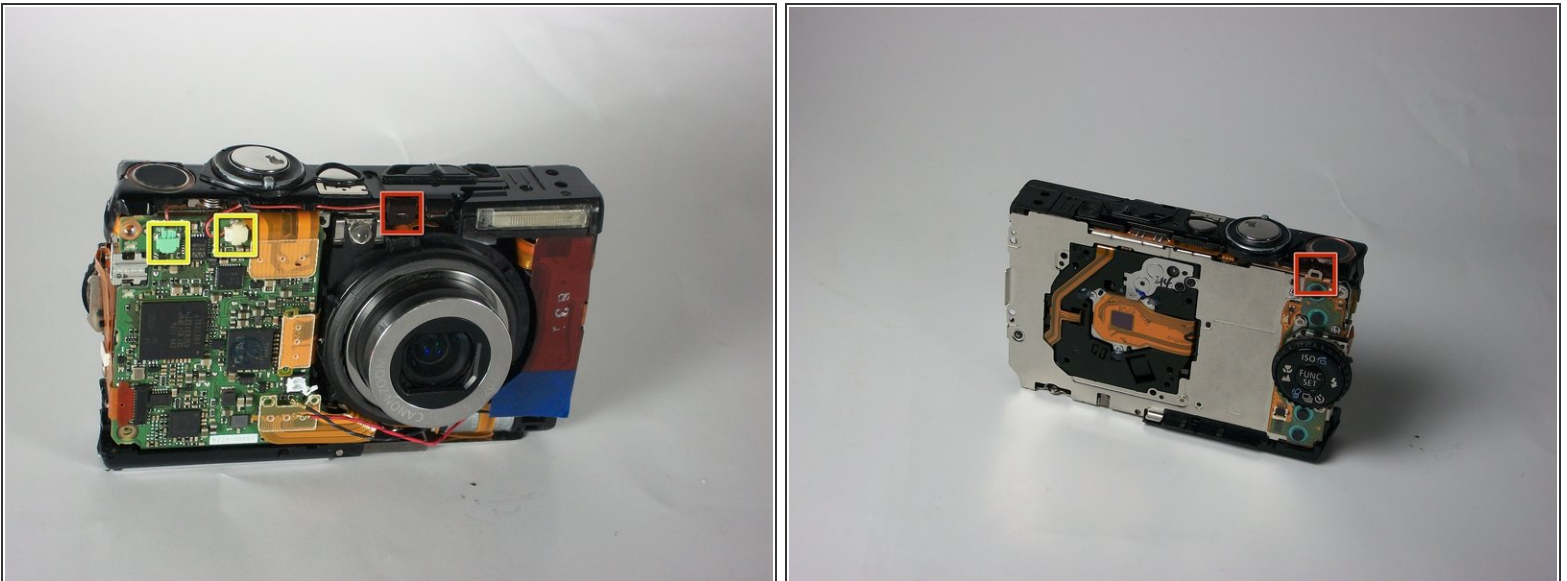
- [Phillips #0 Screwdriver](#) (1)
-

## Step 1 — Back Cover Removal



- Remove the 2 screws (2.41 mm long) on the side of the camera next to the LCD screen.
- Remove the 2 screws (4.08 mm) on the other side. One is located under the rubber USB flap.
- Remove the last screw (2.59 mm) located on the bottom of the camera.
- Slowly pull the back cover of the camera.

## Step 2 — Top Panel



- Unplug the green and white plugs connecting the top panel to the top of the logic board.
- Dislodge the tab above the lens.
- Dislodge the back tab.

To reassemble your device, follow these instructions in reverse order.

This document was last generated on 2019-08-25 08:32:12 AM.