



# Canon Powershot S410 Memory Card Replacement

Replacing or upgrading your memory card so you can take more pictures!

Written By: Randy Lormand



## INTRODUCTION

A simple guide for removing and replacing the memory card.

## Step 1 — Battery



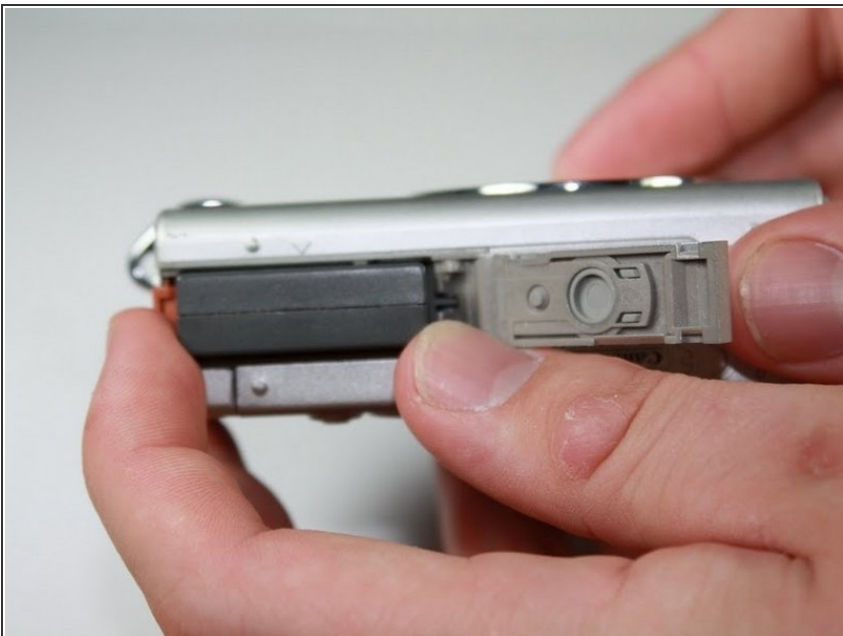
- ① Turn the camera with the bottom side facing up.
- Locate the panel labeled "Batt. Open"
- Place your finger on the panel and slide it in the direction of the arrow.
- The slot will swing open revealing the battery pack.

## Step 2



- ⓘ Rotate the camera so that the slot is horizontal.
- Pull the orange lever and the battery will spring out slightly.

## Step 3



- Grasp battery and fully pull out of slot
- ⓘ When placing the new battery back in the slot, the arrow on the battery must align with the arrow on the camera.

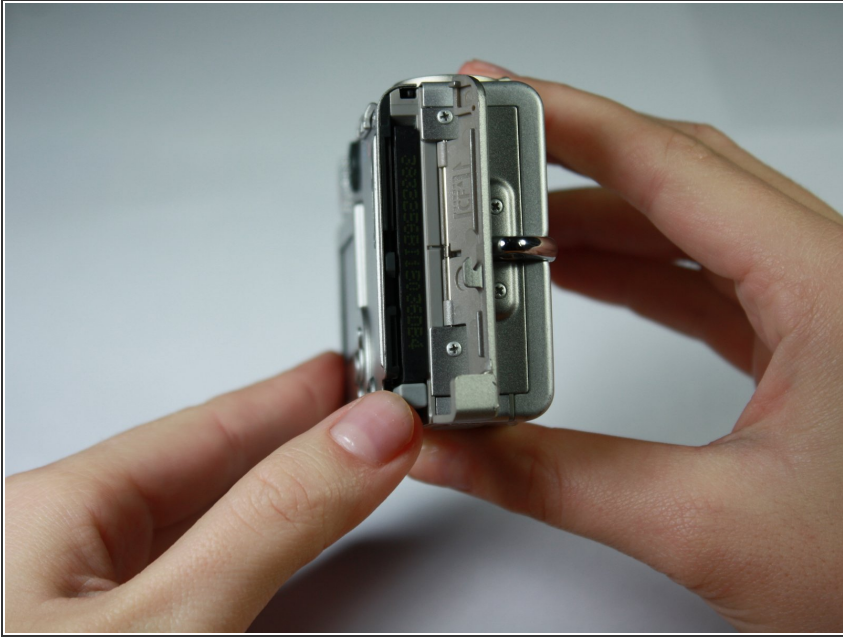


## Step 4 — Memory Card



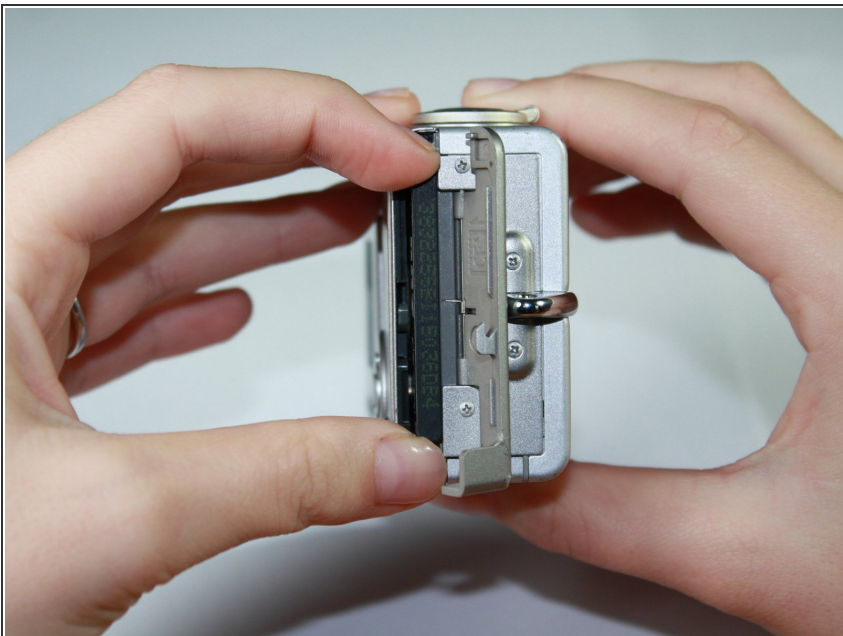
- i** Position the camera as if you were going to take a picture.
- Locate the sliding button labeled "CF OPEN."
  - Place your finger on the button and slide it in the direction of the arrow.
  - The side panel will flip open revealing the compact flash memory card.

## Step 5



- ⓘ Turn the camera to the right side.
- Locate the gray button at the bottom of the open slot.
- Place your finger on the button and push it down.
- The memory card will pop out slightly.

## Step 6



- Grasp edges of card and pull out of slot.
- ⓘ If you insert a new memory card you may be asked to format it after turning on the camera.
- ⓘ Make sure that the arrow on the flash card is pointed towards the direction of the slot
- ⚠ Do not force the memory card into the slot. Any signs of resistance may mean the card is improperly oriented.

Once a new memory card has been inserted close the swinging door and you're done.