



# Toshiba SD-K740 Top Panel Replacement

This is a guide to remove the back panel of the Toshiba SD-K740 DVD player.

Written By: Joe Murphy



---

## INTRODUCTION

This guide gives instructions on how to remove the back panel of the Toshiba SD-K740 DVD player. This is a necessary step to access all parts for repair or replacement.


---

### TOOLS:

- [Phillips #0 Screwdriver](#) (1)
-

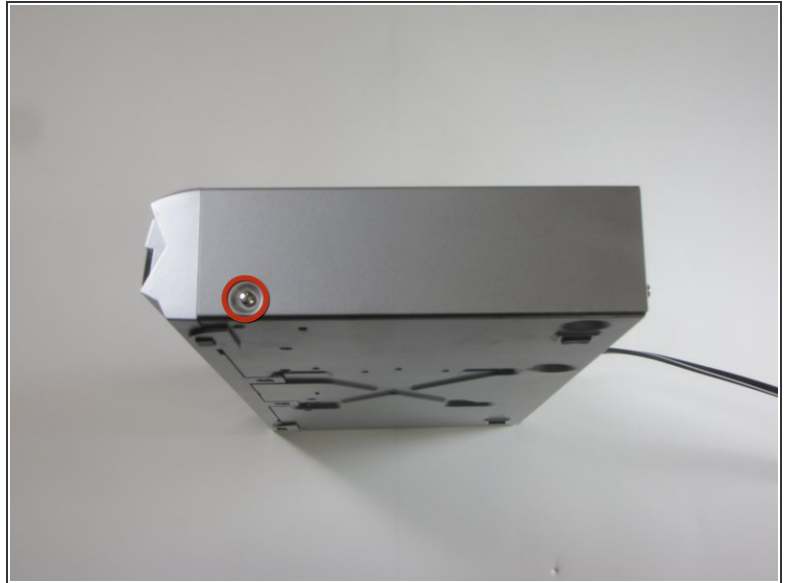
## Step 1 — Top Panel



 Unplug the DVD player before beginning.

- Remove the three 7.7 mm screws from the back panel using a Phillips #0 screwdriver.

## Step 2



- Turn the DVD player on its side.
- Remove the 7.7 mm screw.
- Flip the DVD player onto its other side.
- Remove the 7.7 mm screw.

### Step 3



- Flip the DVD player over onto its front face.
- Remove the back panel by lifting up and pulling it towards yourself.

To reassemble your device, follow these instructions in reverse order.