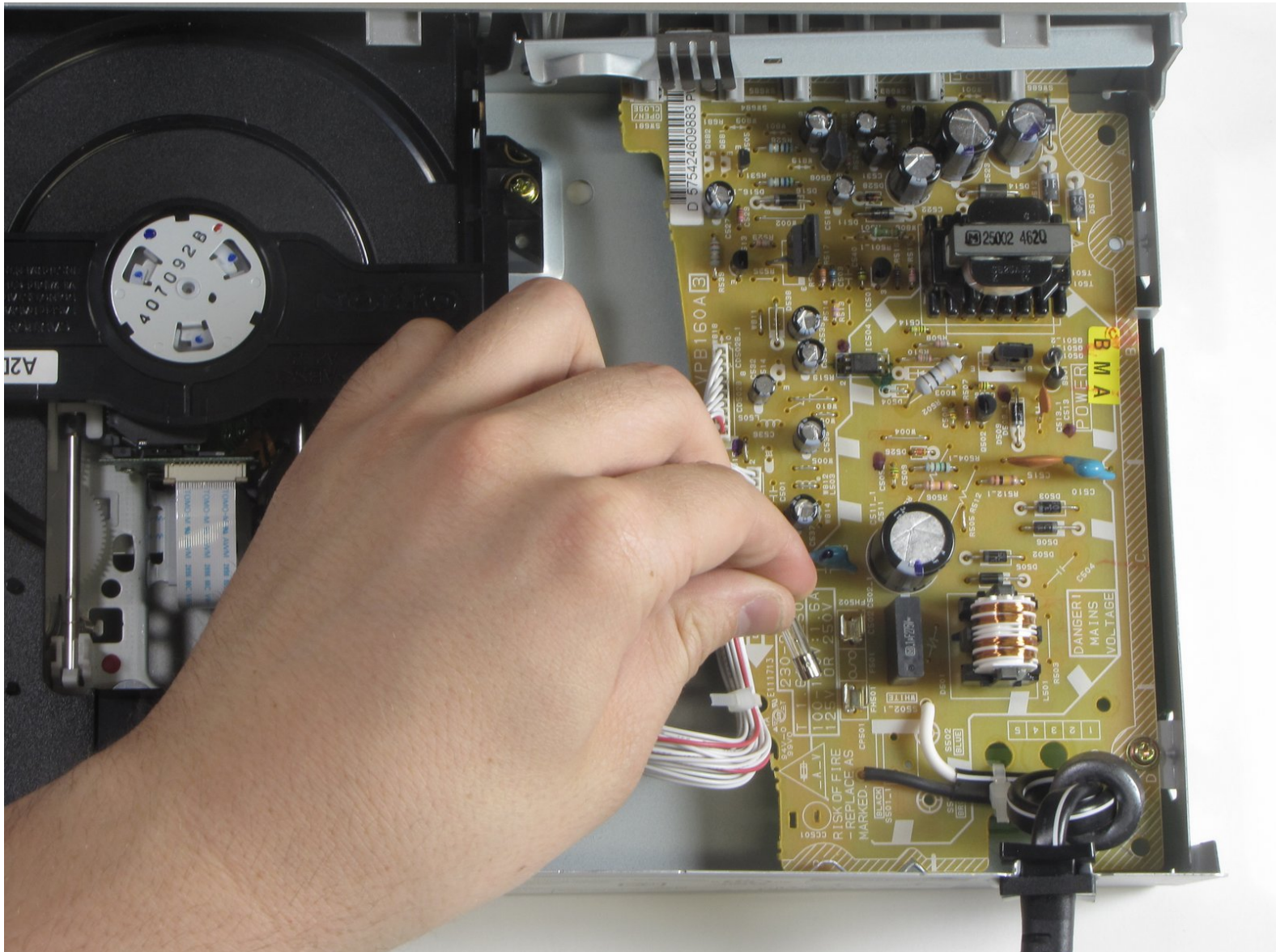




Toshiba SD-K740 Motherboard Fuse Replacement

This is a guide to remove the fuse of the Toshiba SD-K740 DVD player.

Written By: John Lokker



INTRODUCTION


This guide gives instructions on how to remove the fuse located on the yellow motherboard of the Toshiba SD-K740 DVD player.

TOOLS:

- [Phillips #2 Screwdriver](#) (1)
 - [iFixit Opening Tools](#) (1)
-

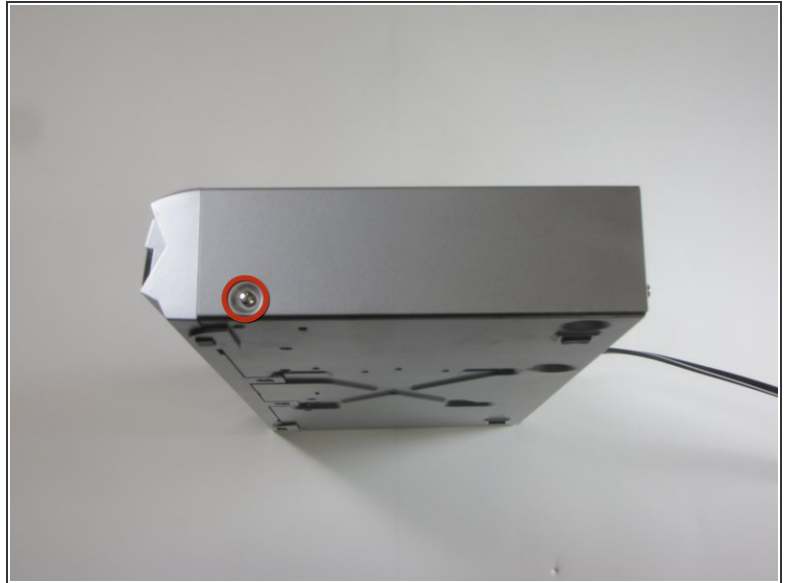
Step 1 — Top Panel



 Make sure the DVD player is unplugged before beginning.

- Remove the three .303 inch screws from the back panel using a #0 Phillips head screwdriver.

Step 2



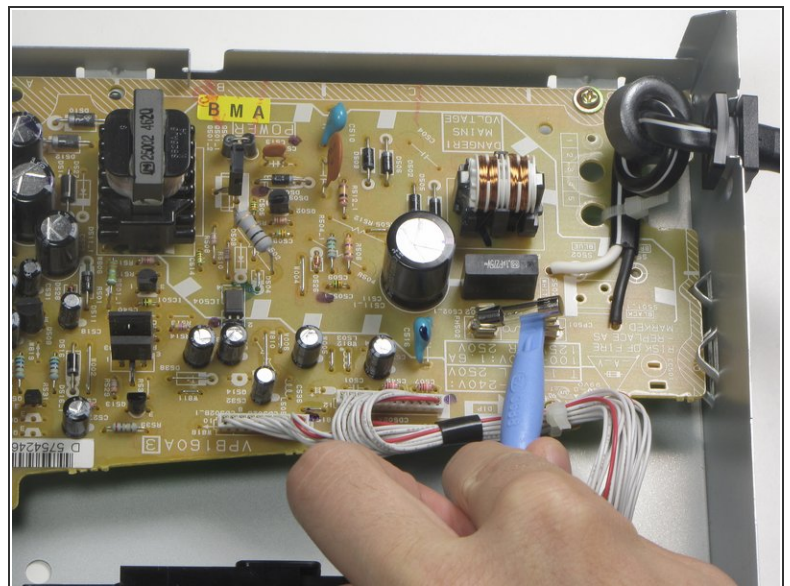
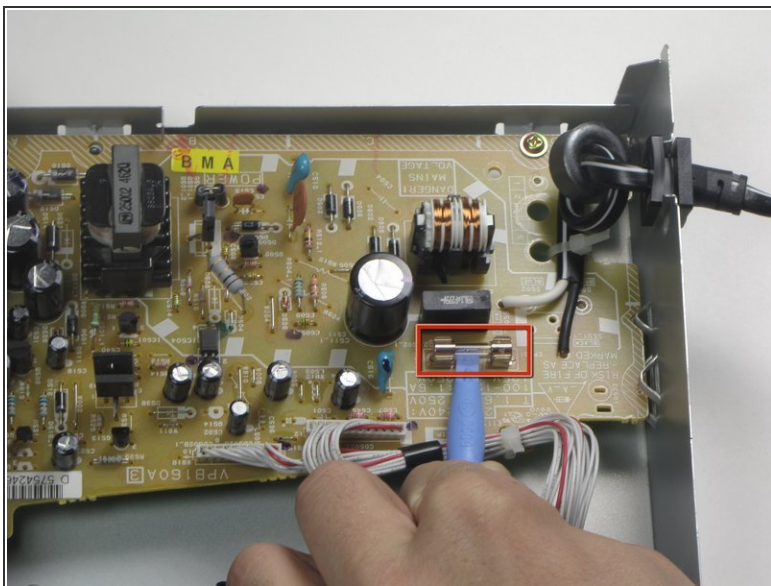
- i Turn the DVD player on its side.
 - Remove the .303 inch screw.
- i Now flip the DVD player onto its other side.
 - Remove the .303 inch screw from this side.

Step 3



- ① Flip the DVD player over onto its front face.
- Remove the back panel by lifting up and pulling it towards yourself.

Step 4 — Motherboard Fuse



- Use the plastic opening tool to gently pop the fuse out of the restraining brackets.

To reassemble your device, follow these instructions in reverse order.