



# Palm m500 Back Panel Replacement

This guide will detail how to disassemble the backplate.

Written By: Alex Haggblade



---

## INTRODUCTION

Before you begin disassembly, be sure to have the necessary tool. You will need a Torx size T6 screwdriver. You will be removing the stylus in order to take off the back panel.

---

### TOOLS:

- [T6 Torx Screwdriver](#) (1)
  - [iFixit Opening Tools](#) (1)
-

## Step 1 — Back Panel



- Remove the stylus from the side of the PDA by sliding it upwards.

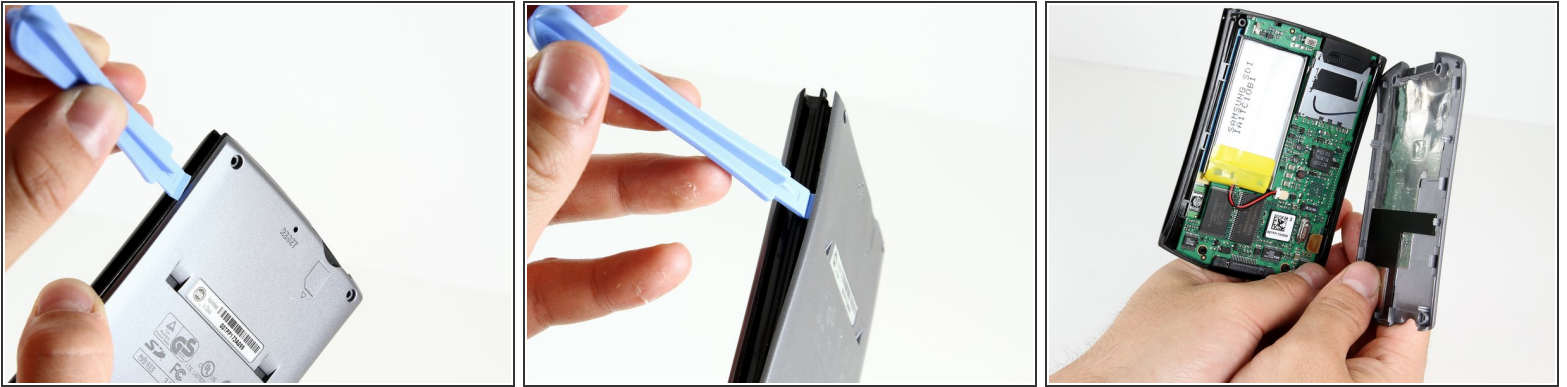
## Step 2



- Remove the 4 screws from the corners of the back panel of the device using a size T6 Torx screwdriver.

**i** Place screws in a plastic bag or another safe place.

### Step 3



- Insert the edge of the plastic opening tool between the back panel and the black stylus holder.
- Carefully and forcefully pry the panels apart.

To reassemble your device, follow these instructions in reverse order.