



# Palm TX Back Panel Replacement

How to remove the back panel of the Palm TX.

Written By: Spencer Lewson



---

## INTRODUCTION

Removing the back panel allows you to access the various parts of the Palm T|X PDA.

---

### TOOLS:

- [iFixit Opening Tools](#) (1)
  - [T5 Torx Screwdriver](#) (1)
-

## Step 1 — Back Panel



- Orient the device so that the display faces forward.
- Remove the stylus from the right side.

## Step 2



- Turn over the device so that the back panel faces forward.
- Use a T5 Torx screwdriver to remove the four 6.35mm corner screws.

### Step 3



- Rotate the device so that the display faces forward.
- Insert a plastic opening tool with the angled tip pointing downward into the crevice on the left side of the device.
- Pry along the crevice to loosen the back panel.
- Repeat this process for the right side.

## Step 4

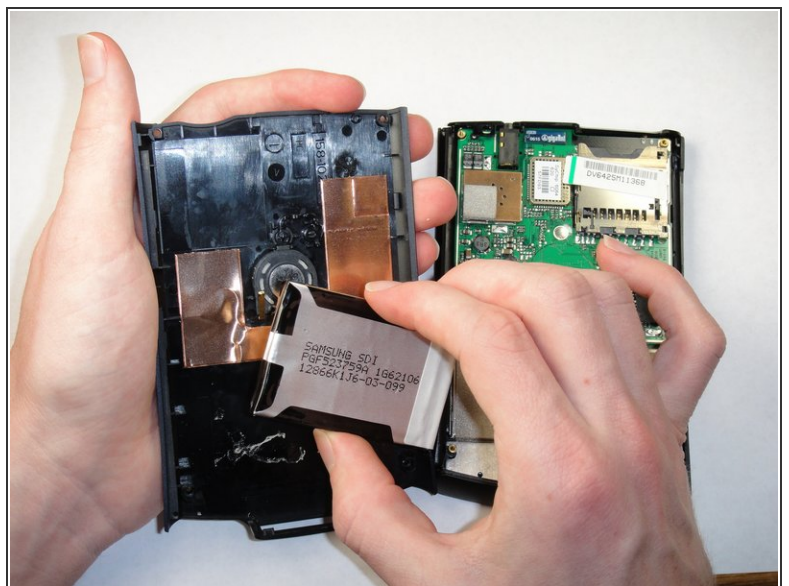
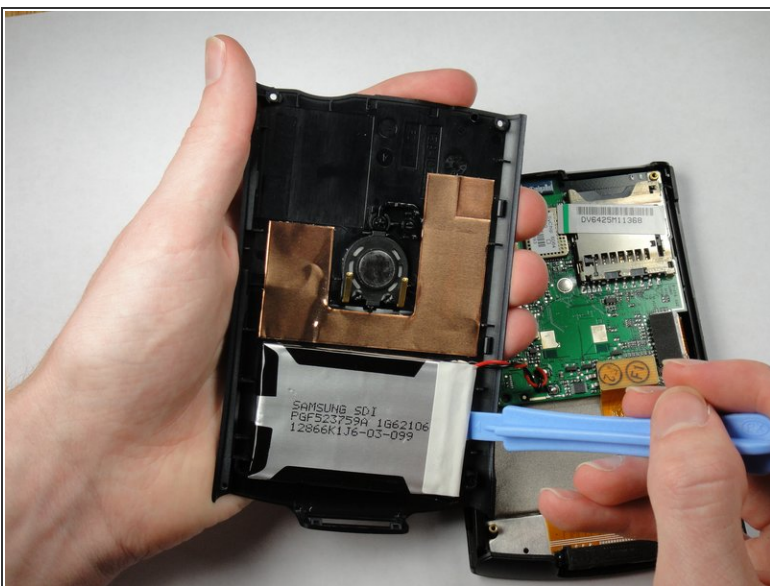


- Carefully pry the back panel to open the device.

⚠ Be careful not to break the wire that connects the battery pack to the motherboard.

ⓘ When reassembling, snap the back panel back into place and then insert the top cover.

## Step 5



- Use a plastic opening tool to peel the battery pack from the back panel.

The battery pack is glued to the back panel so removing it may require considerable effort.



To reassemble your device, follow these instructions in reverse order.

This document was last generated on 2019-07-16 03:32:47 PM.