



# Palm TX Battery Pack Replacement

Replace the Palm T|X battery.

Written By: Spencer Lewson



---

## INTRODUCTION

Outline what you are going to teach someone how to do.

---

### TOOLS:

- [Soldering Workstation](#) (1)
-

## Step 1 — Back Panel



- Orient the device so that the display faces forward.
- Remove the stylus from the right side.

## Step 2



- Turn over the device so that the back panel faces forward.
- Use a T5 Torx screwdriver to remove the four 6.35mm corner screws.

### Step 3



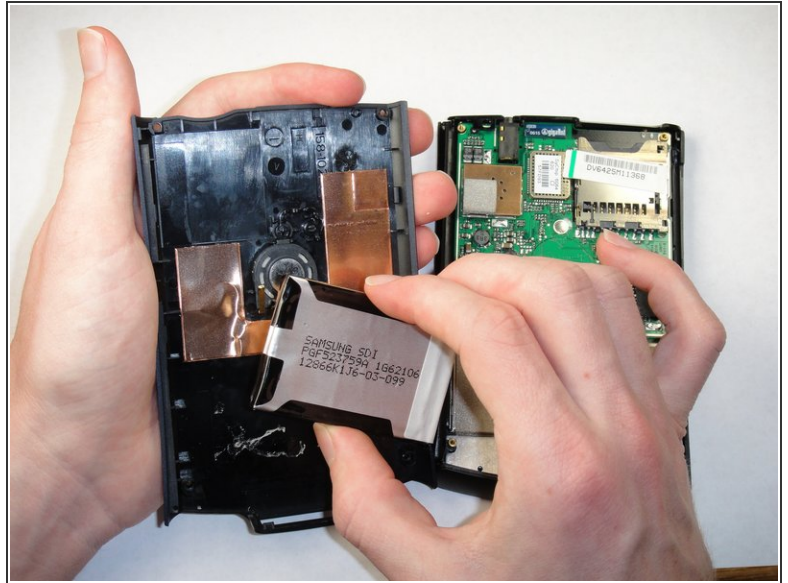
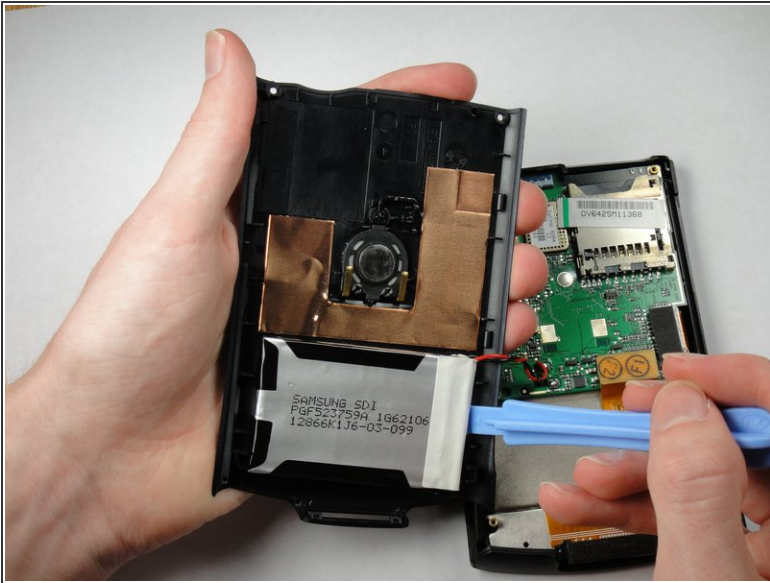
- Rotate the device so that the display faces forward.
- Insert a plastic opening tool with the angled tip pointing downward into the crevice on the left side of the device.
- Pry along the crevice to loosen the back panel.
- Repeat this process for the right side.

## Step 4



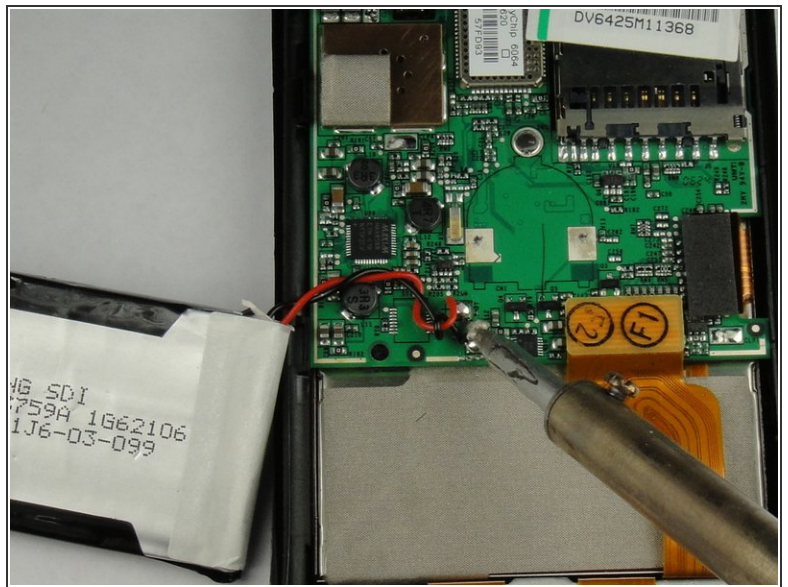
- Carefully pry the back panel to open the device.
- ⚠ Be careful not to break the wire that connects the battery pack to the motherboard.
- ⓘ When reassembling, snap the back panel back into place and then insert the top cover.

## Step 5



- Use a plastic opening tool to peel the battery pack from the back panel.
- ⓘ The battery pack is glued to the back panel so removing it may require considerable effort.

## Step 6 — Battery Pack



- Use a soldering iron to disconnect the battery wires from the motherboard.
- For soldering instructions, you can view the [Soldering Guide](#).

To reassemble your device, follow these instructions in reverse order.