



Nokia Lumia 635 630 Display Assembly Replacement with Frame

Nokia Lumia 635 630 Display Assembly Replacement with Frame

Written By: ZFix



INTRODUCTION

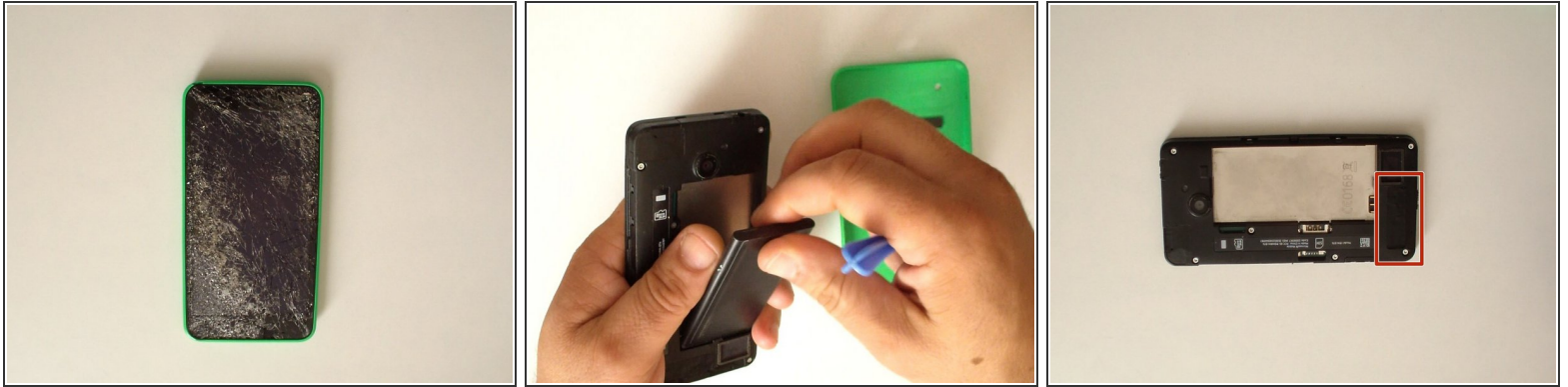
How to disassemble the phone and replace the display assembly - Touch screen glass, LCD Display and middle frame.

[video: <https://www.youtube.com/watch?v=KXYHsUrhv2A>]

TOOLS:

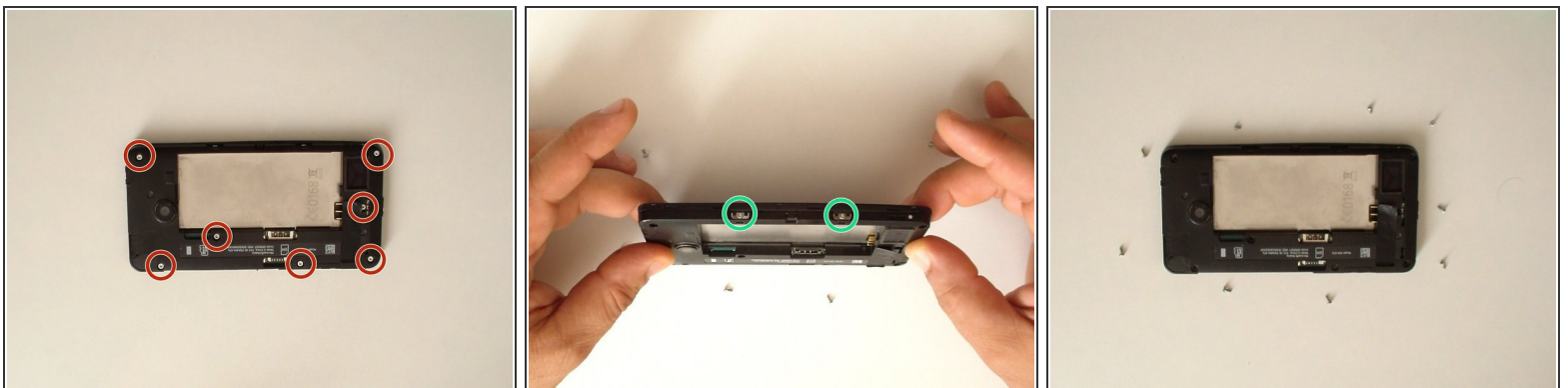
- [T4 Torx Screwdriver](#) (1)
 - [Tweezers](#) (1)
 - [iFixit Opening Tools](#) (1)
-

Step 1 — Display Assembly with Frame



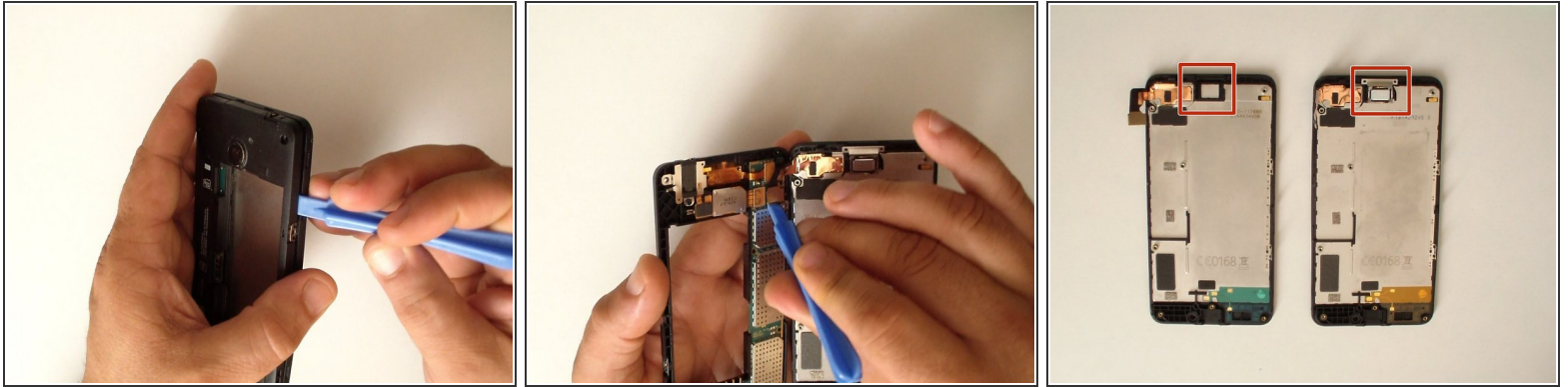
- Remove the battery and any SIM and memory cards.
- Remove the black sticker at the bottom side of the phone.

Step 2




- Use a screwdriver Torx T4 and remove the 7x screws.
- There are two other smaller screws with the same head size – remove them as well.

Step 3

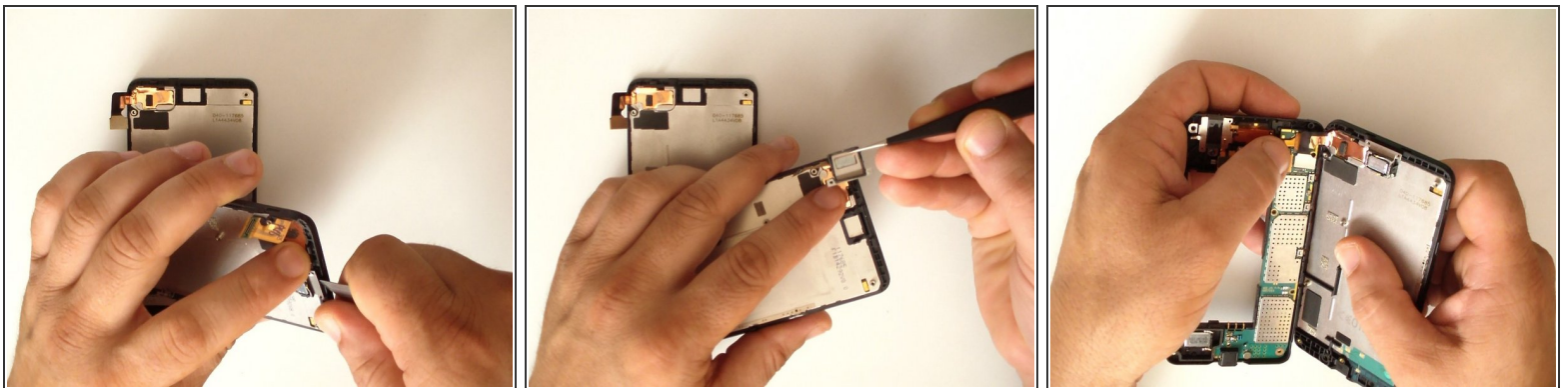


- Lift the rear bezel and unhook the display assembly flex cable.

 Don't use a metal tool for disconnecting the flex cable. There are many small elements near the connectors. You could break them. If you don't have a suitable tool just use your nails.

- Now we have to transfer the earpiece.

Step 4 — LOUDSPEAKER



- Put the earpiece on the new display assembly and start with reassembling.

To reassemble your device, follow these instructions in reverse order.