



How to Samsung Galaxy Tab S 8.4 Factory Reset

How to Samsung Galaxy Tab S 8.4 Factory Reset

Written By: ZFix



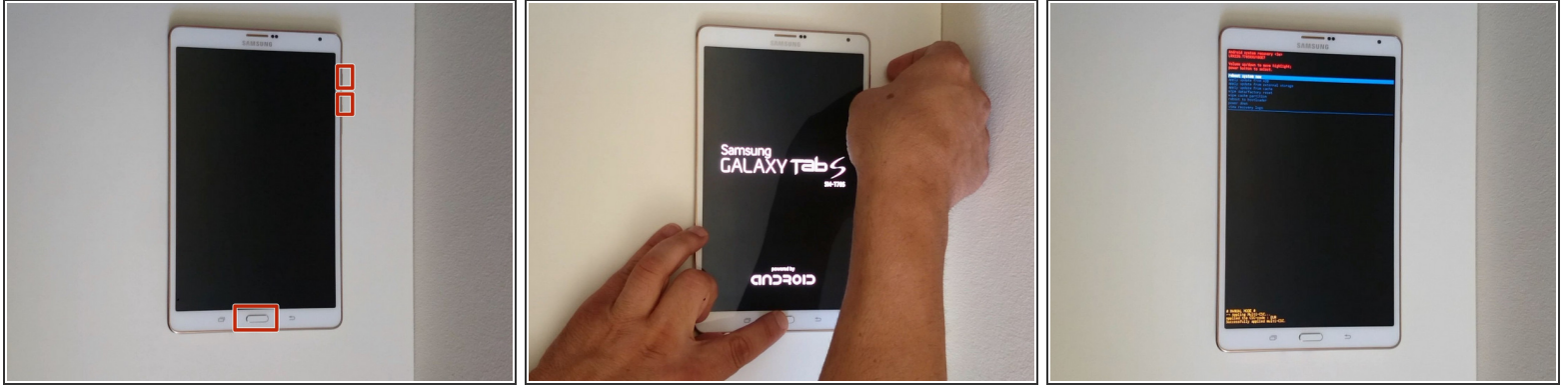
INTRODUCTION

If you forgot your lock screen pattern, PIN and you can't enter the menu with your google account, you can perform a Factory Master reset.

!!! This will erase all your personal data (phone book, accounts, pictures, etc.) and will remove all after installed applications.

[video: <https://www.youtube.com/watch?v=tkPpnPhaeQk>]

Step 1 — How to Samsung Galaxy Tab S 8.4 Factory Reset



- Switch off the tablet.
- Press and hold the Home + Volume UP + Power buttons simultaneously.
- When you see the Galaxy logo, release only the Power button.
- In Android System Recovery menu use |Volume Up/Down keys for navigation and the Power button a choice. Select one after one:
 - wipe data/factory reset
 - Yes -- delete all user data
 - reboot system now
- That's all.

To reassemble your device, follow these instructions in reverse order.

This document was last generated on 2018-05-04 02:07:09 PM.