



MacBook Pro 15" Core Duo Model A1150 Memory Door Replacement

Written By: iRobot



INTRODUCTION

Removing a few screws will remove this part and allow access to your RAM.

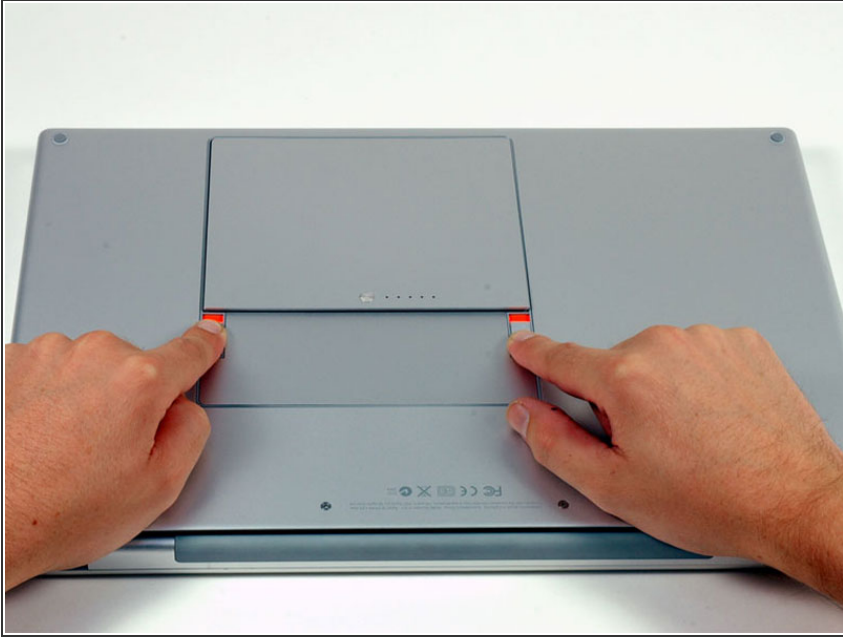
TOOLS:

- [Phillips #00 Screwdriver](#) (1)

PARTS:

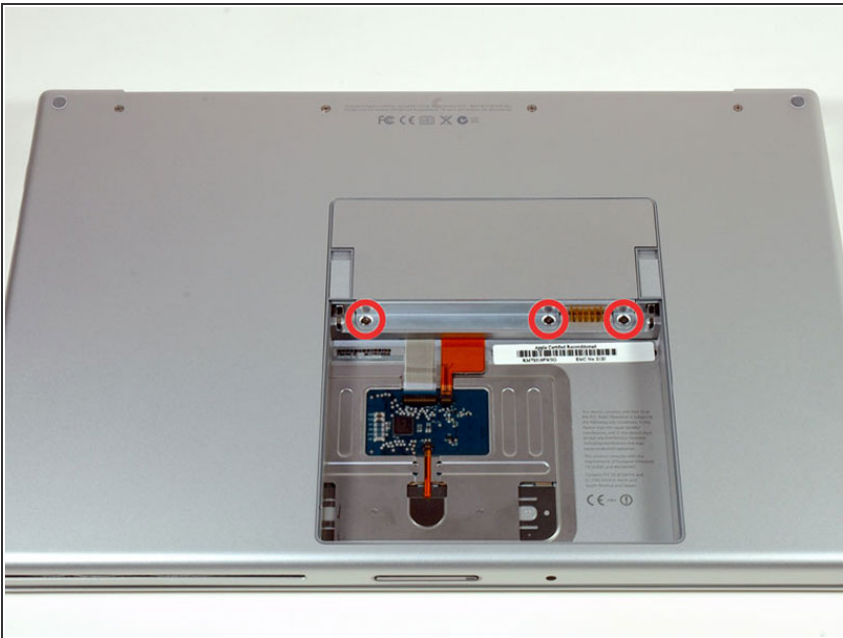
- [MacBook Pro 15" Memory Door](#) (1)
-

Step 1 — Battery



- Use your fingers to push both battery release tabs away from the battery, and lift the battery out of the computer.

Step 2 — Memory Door



- Remove the three identical Phillips screws from the memory door.
- ☑ Make sure to record which sets of screws came from where. This will help when re-assembling.

Step 3



- Lift the memory door up enough to get a grip on it, and slide it toward you, pulling it away from the casing.

To reassemble your device, follow these instructions in reverse order.

This document was last generated on 2017-06-19 08:38:29 AM.