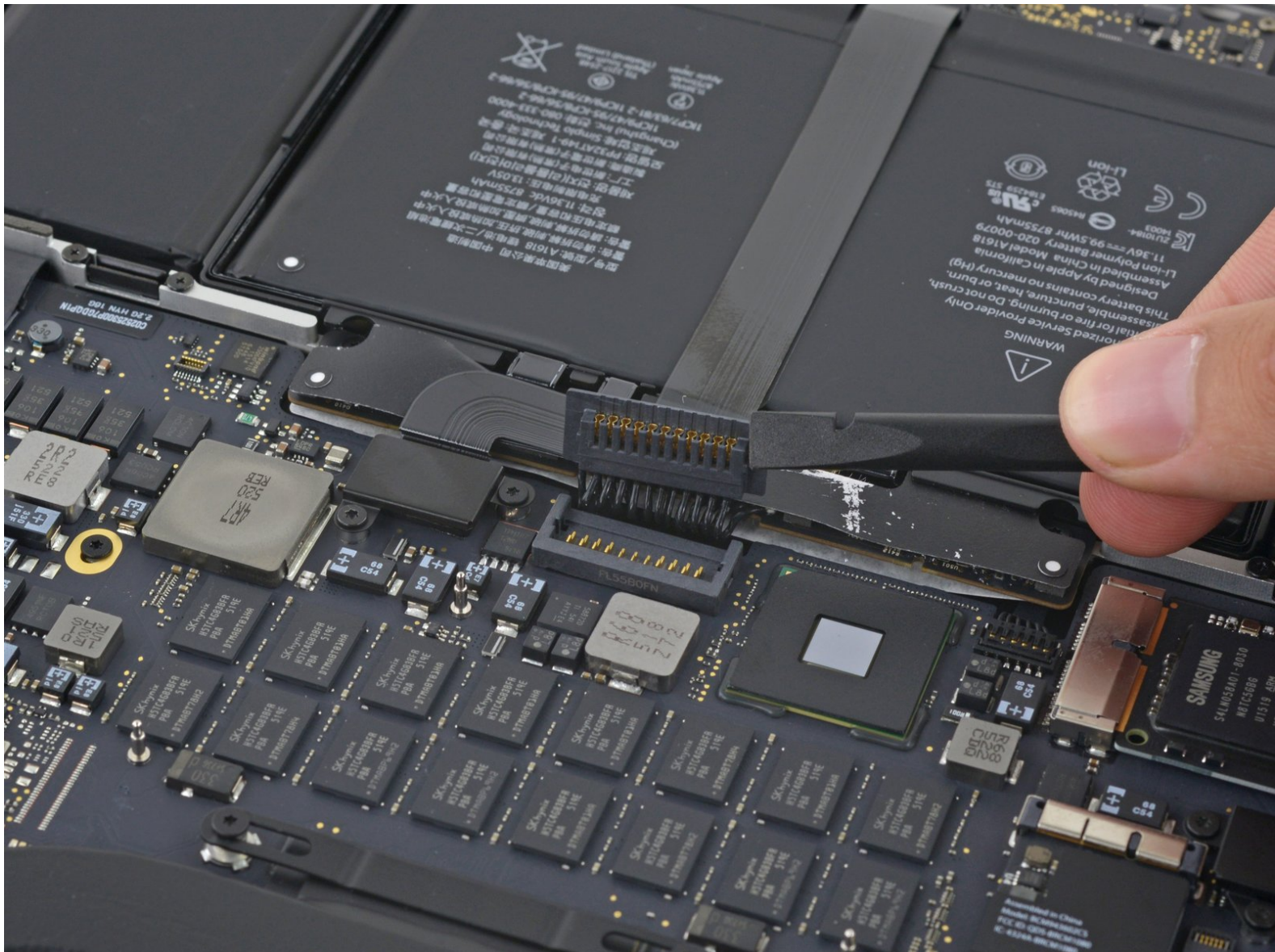




# MacBook Pro 15" Retina Display Mid 2015 Battery Connector Replacement

Pre-req for disconnecting the battery without removing it.

Written By: Sam Goldheart



---

## INTRODUCTION

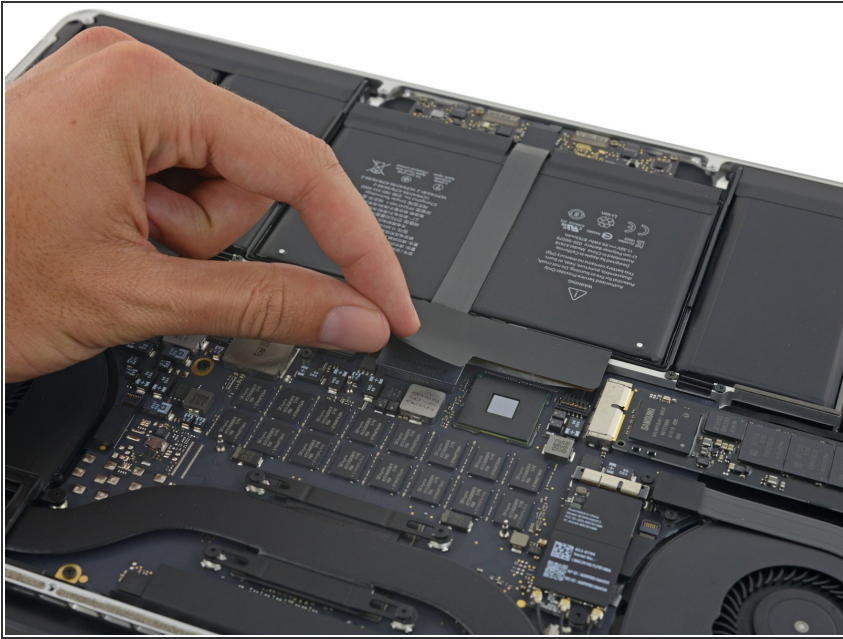
Pre-req for unplugging the battery without removing it.

---

### TOOLS:

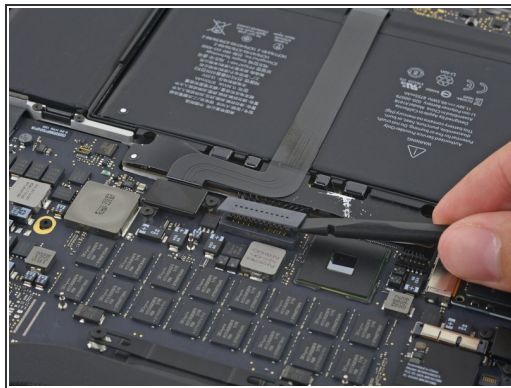
- [Spudger](#) (1)
-

## Step 1 — Battery Connector



- Peel back the sticker covering the battery connector.

## Step 2



- Gently lift each side of the battery connector to pry the connector out of its socket on the logic board.
- Bend the connector back toward the battery, ensuring that the battery connector doesn't accidentally make contact with the logic board.

To reassemble your device, follow these instructions in reverse order.