



Canon EOS Rebel XS Latch Side Cover Replacement

The latch side cover protects the back cover latch. This guide demonstrates how to remove this part.

Written By: Daniel Bussone



INTRODUCTION

Use this guide to replace a cosmetically damaged latch side cover.

TOOLS:

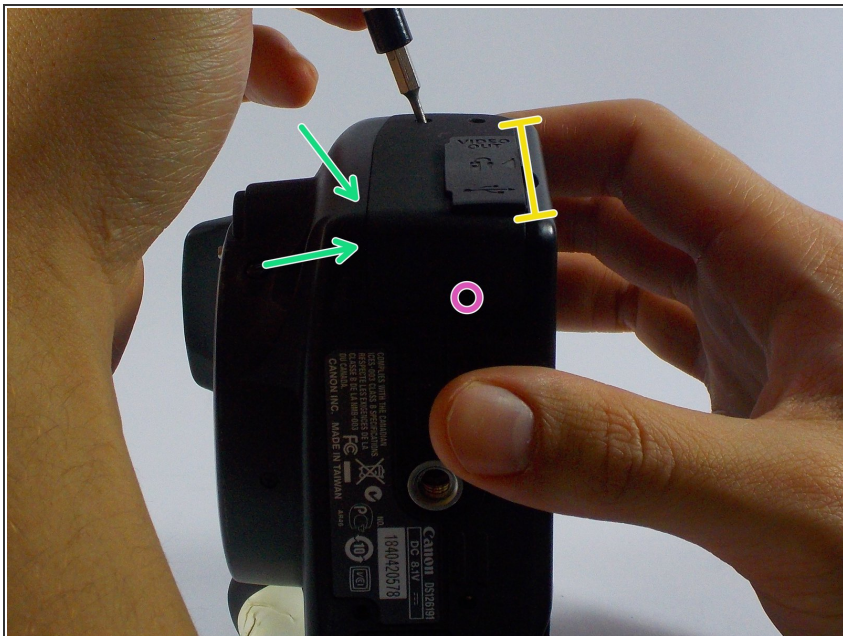
- [Phillips #00 Screwdriver](#) (1)
-

Step 1 — Latch Side Cover



- Remove the two 3mm (1/8") black screws from the side cover using a #00 Phillips screwdriver.

Step 2



- On the bottom, remove the 6mm (13/64") screw with the #00 Phillips Screwdriver.
- Pry up the panel; starting from the front/bottom corner, as indicated.
- There's a concealed lip, under the opposite edge.

To reassemble your device, follow these instructions in reverse order.

This document was last generated on 2019-07-20 07:36:14 AM.