



# Removing Olympus FE-210 Front Casing

This will guide you through the steps necessary for removing the front camera casing.

Written By: Matt



---

## INTRODUCTION

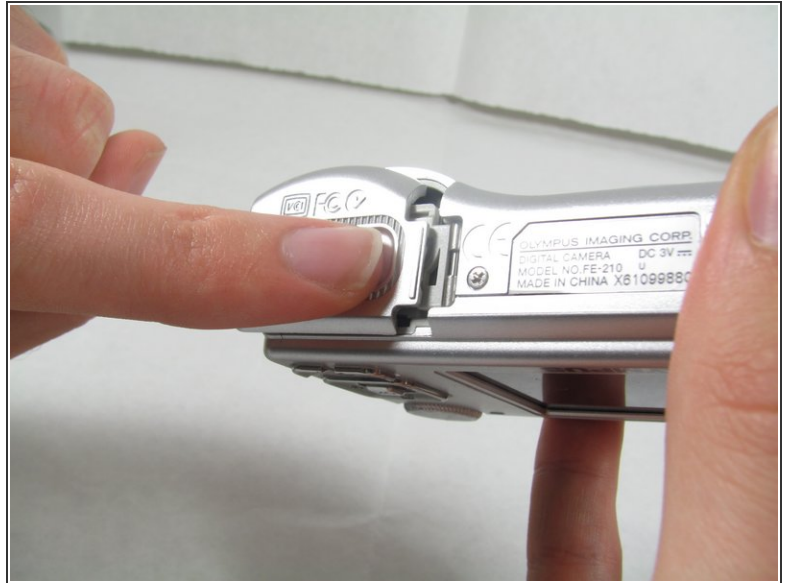
Removing the front camera casing will give you access to the flash assembly.

---

### TOOLS:

- [Phillips #00 Screwdriver](#) (1)
-

## Step 1 — Battery



- The battery compartment is located on the bottom side of the camera. Push the button in, and slide the cover to get access to the batteries.

## Step 2



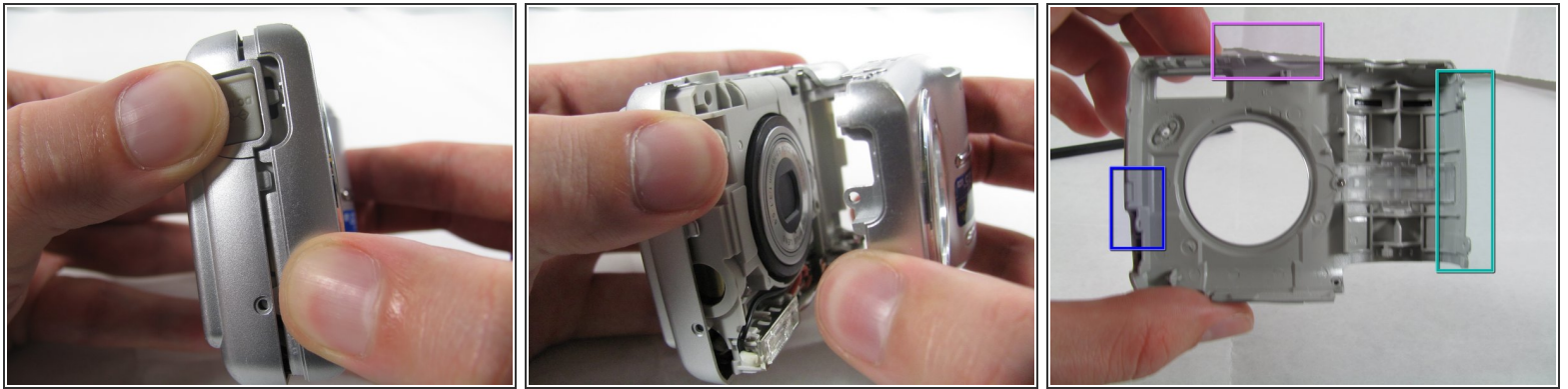
- The batteries will slide right out.
- ☞ When putting new batteries in, make sure they are pointing the right direction.

## Step 3 — Front Casing



- Remove the 7 screws holding the front case in place, with a #00 screwdriver.
  - Six screws are 3.6 mm.
  - The seventh screw is 3.2 mm.

## Step 4



- Pulling the front case off, requires applying enough strength in the right areas.
- The front case snaps into place in three places:
  - At the top and bottom of the battery side (opposite of side pictured) of the case.
  - Right in the middle of the DC-in side (side pictured) of the case.
  - Top of the camera, to the left of the power button.
- Once those places are disconnected, the front case will pop right off.
- ⓘ The camera in the first two pictures is upside down. This is the best position to place your thumbs to remove the case.

To reassemble your device, follow these instructions in reverse order.