



MacBook Pro 15" Core Duo Model A1150 Optical Drive Replacement

Written By: iRobot



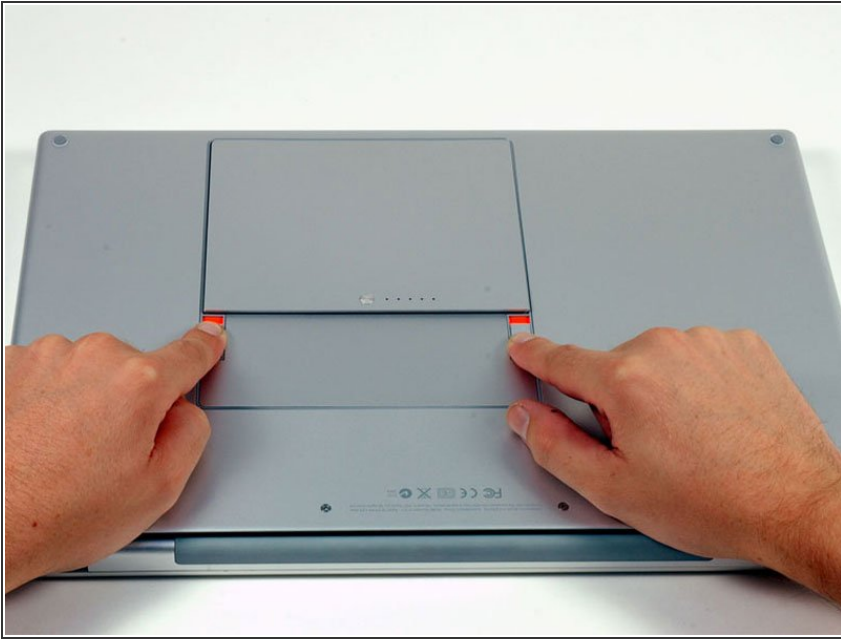
INTRODUCTION

How to access the SuperDrive

TOOLS:

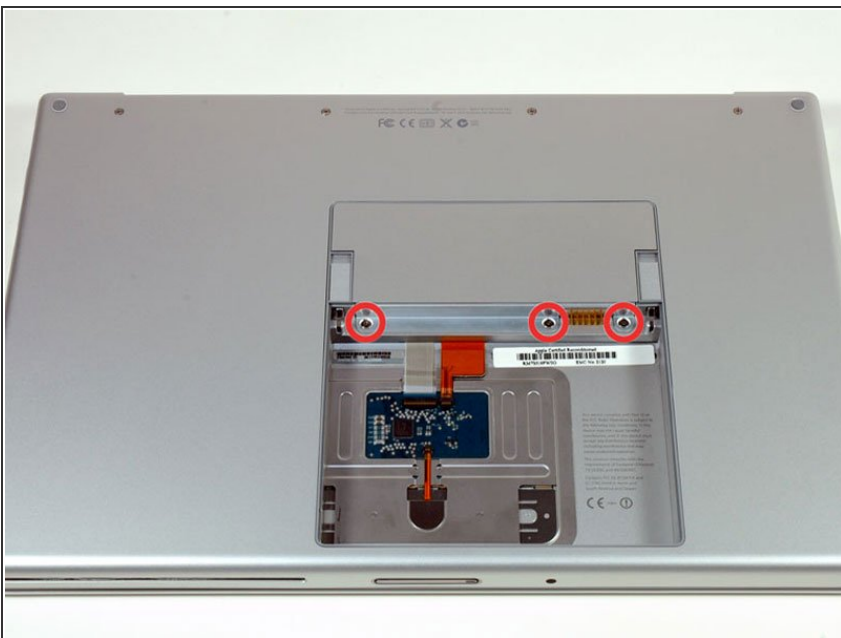
- [Phillips #00 Screwdriver](#) (1)
 - [Spudger](#) (1)
 - [T6 Torx Screwdriver](#) (1)
-

Step 1 — Battery



- Use your fingers to push both battery release tabs away from the battery, and lift the battery out of the computer.

Step 2 — Memory Door



- Remove the three identical Phillips screws from the memory door.
- ☑ Make sure to record which sets of screws came from where. This will help when re-assembling.

Step 3



- Lift the memory door up enough to get a grip on it, and slide it toward you, pulling it away from the casing.

Step 4 — Upper Case



- Remove the two Phillips screws in the battery compartment near the latch.

Step 5



- Remove the following 6 screws:
 - Two 10 mm T6 Torx screws on either side of the RAM slot.
 - Four 14.5 mm Phillips screws along the hinge.

Step 6



- Remove the four Phillips screws on the port side of the computer.

Step 7



- Rotate the computer 90 degrees and remove the two Phillips screws from the rear of the computer.

Step 8



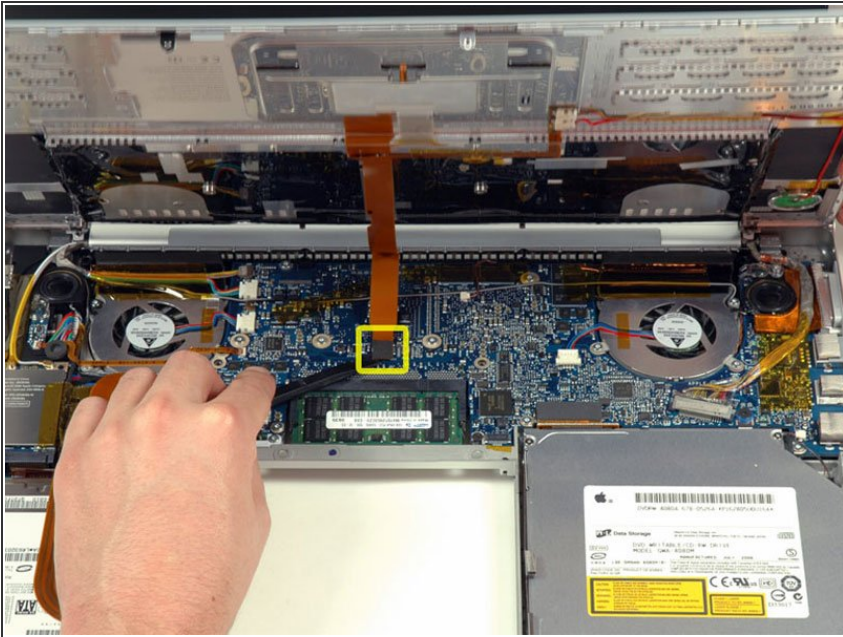
- Rotate the computer 90 degrees again and remove the four Phillips screws from the side of the computer.

Step 9



- ⓘ Do not yank the upper case off quickly. The case is attached to the logic board via a ribbon cable.
- Lift up at the rear of the case and work your fingers along the sides, freeing the case as you go. Once you have freed the sides, you may need to rock the case up and down to free the front of the upper case. This stage can be quite tricky. Over the DVD reader are 4 tabs set back which pull out vertically.
- Note that the two small tongues on the left hand front of the upper case may bend while you remove the upper case. When re-installing, you may need to bend them back to fit in the grooves in the lower case.

Step 10



- Disconnect the trackpad and keyboard ribbon cable from the logic board, removing tape as necessary.
- Remove the upper case.

Step 11 — Optical Drive



- Disconnect the orange SuperDrive ribbon cable from the logic board, removing tape as necessary.

Step 12



- Remove the following 3 screws:
 - Two 3.3 mm silver Phillips screws on either side of the SuperDrive.
 - One 4.8 mm black Phillips screw at the top right corner of the drive.
- The 4.8mm screw may be a T6 Torx

Step 13



- Lift the optical drive up and out of the computer.

To reassemble your device, follow these instructions in reverse order.