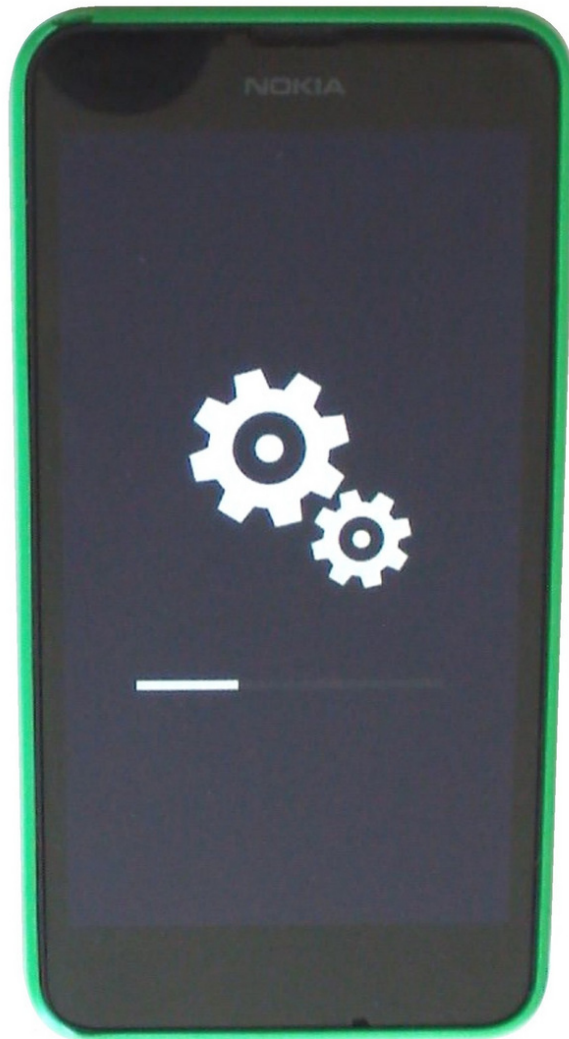




# Nokia Lumia 635, 630 - Hard Reset

Nokia Lumia 635, 630 - Factory, Master, Hard Reset

Written By: ZFix



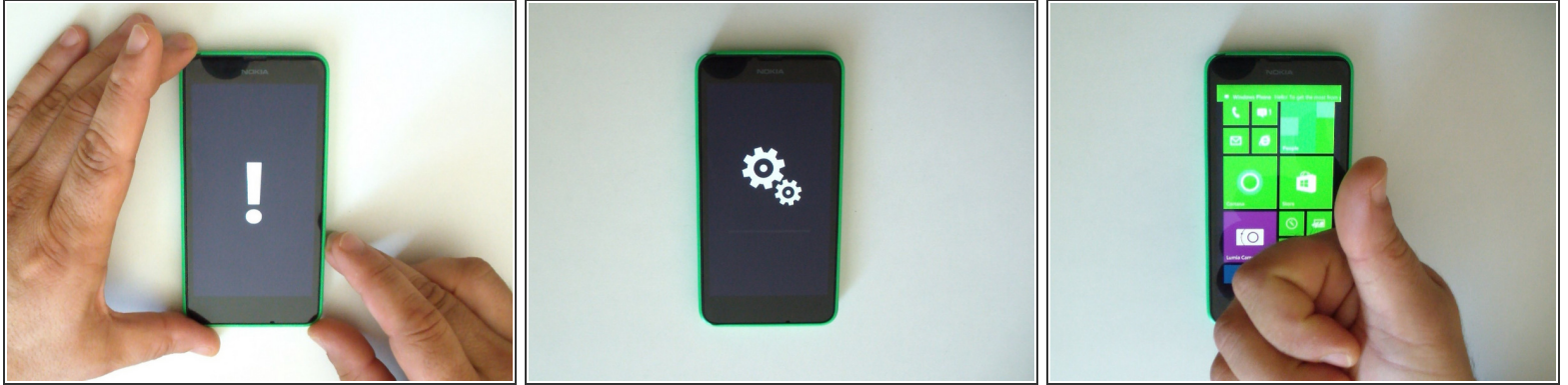
## INTRODUCTION

Warning!

This will delete all your personal data!

[video: <https://www.youtube.com/watch?v=hwY-QYg1zlg>]

## Step 1 — Nokia Lumia 635, 630 - Hard Reset



- Turn the phone off.
- Press and hold the power button. When the phone vibrates, release it and press and hold the volume down button until you see the exclamation mark on the screen.
- Another way to do this - press and hold the volume down button and connect the charger.
- When the exclamation mark on the screen press this sequence of keys:
  - -> Volume Up
  - -> Volume Down
  - -> Power button
  - -> Volume Down

To reassemble your device, follow these instructions in reverse order.

This document was last generated on 2018-03-21 10:15:47 PM.