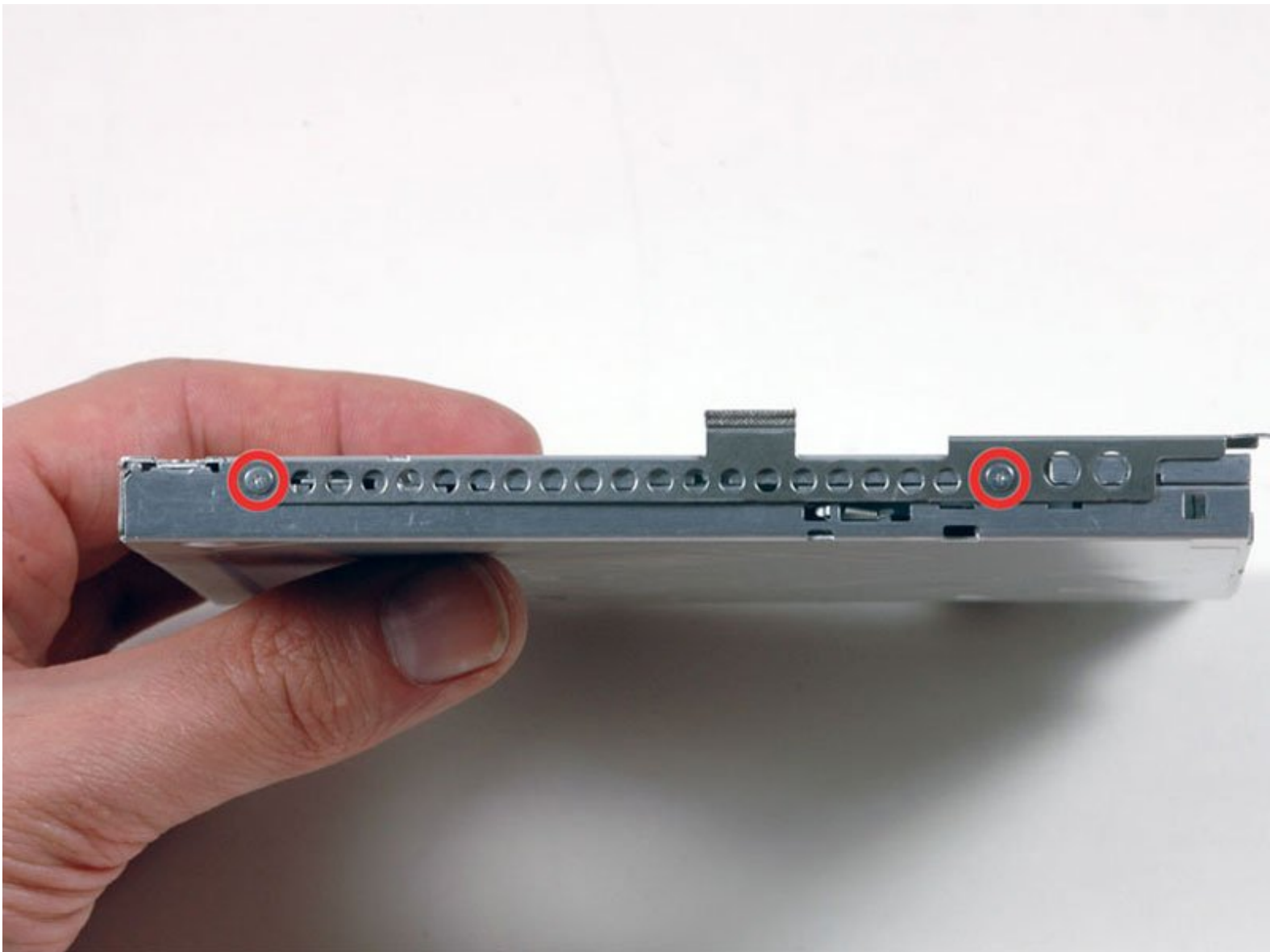




MacBook Pro 15" Core Duo Model A1150 Optical Drive Replacement

Written By: iRobot



INTRODUCTION

[video: <http://www.youtube.com/watch?v=kFfQD0EtbLM>]

Upgrade or replace the SuperDrive (requires a slim drive).



TOOLS:

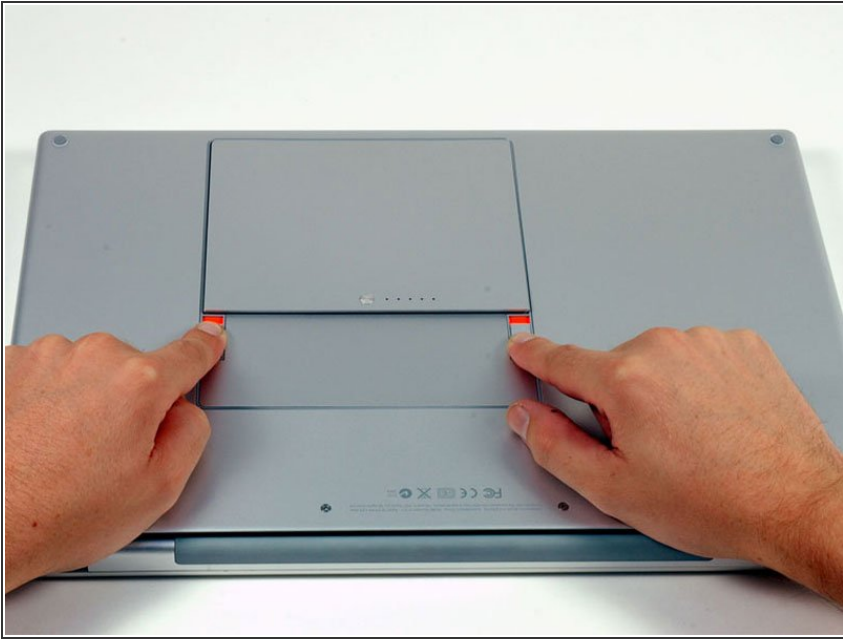
- [Phillips #00 Screwdriver](#) (1)
- [Spudger](#) (1)
- [T6 Torx Screwdriver](#) (1)



PARTS:

- [MacBook/MacBook Pro 15" 6x SuperDrive](#) (1)
- [MacBook/MacBook Pro 15" 8x SuperDrive](#) (1)
- [MacBook Pro 15" \(Models A1150/A1211\) 4x SuperDrive \(Used\)](#) (1)
- [MacBook Pro 15" \(Models A1150/A1211\) 6x SuperDrive \(Used\)](#) (1)
- [9.5 mm PATA Optical Bay SATA Hard Drive Enclosure](#) (1)

Step 1 — Battery



- Use your fingers to push both battery release tabs away from the battery, and lift the battery out of the computer.

Step 2 — Memory Door



- Remove the three identical Phillips screws from the memory door.
- ☑ Make sure to record which sets of screws came from where. This will help when re-assembling.

Step 3



- Lift the memory door up enough to get a grip on it, and slide it toward you, pulling it away from the casing.

Step 4 — Upper Case



- Remove the two Phillips screws in the battery compartment near the latch.

Step 5



- Remove the following 6 screws:
 - Two 10 mm T6 Torx screws on either side of the RAM slot.
 - Four 14.5 mm Phillips screws along the hinge.

Step 6



- Remove the four Phillips screws on the port side of the computer.

Step 7



- Rotate the computer 90 degrees and remove the two Phillips screws from the rear of the computer.

Step 8



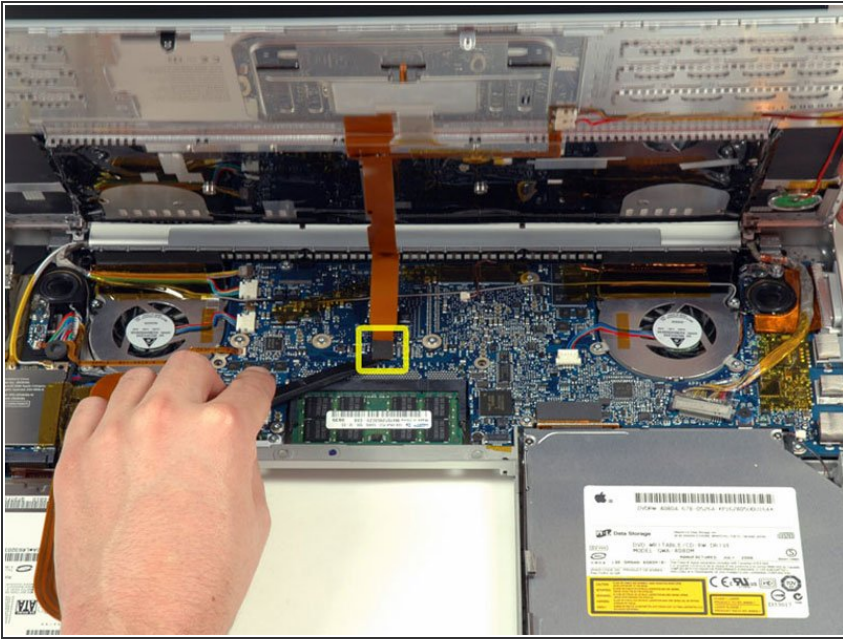
- Rotate the computer 90 degrees again and remove the four Phillips screws from the side of the computer.

Step 9



- ⓘ Do not yank the upper case off quickly. The case is attached to the logic board via a ribbon cable.
- Lift up at the rear of the case and work your fingers along the sides, freeing the case as you go. Once you have freed the sides, you may need to rock the case up and down to free the front of the upper case. This stage can be quite tricky. Over the DVD reader are 4 tabs set back which pull out vertically.
- Note that the two small tongues on the left hand front of the upper case may bend while you remove the upper case. When re-installing, you may need to bend them back to fit in the grooves in the lower case.

Step 10



- Disconnect the trackpad and keyboard ribbon cable from the logic board, removing tape as necessary.
- Remove the upper case.

Step 11 — Optical Drive



- Disconnect the orange SuperDrive ribbon cable from the logic board, removing tape as necessary.

Step 12



- Remove the following 3 screws:
 - Two 3.3 mm silver Phillips screws on either side of the SuperDrive.
 - One 4.8 mm black Phillips screw at the top right corner of the drive.
- The 4.8mm screw may be a T6 Torx

Step 13



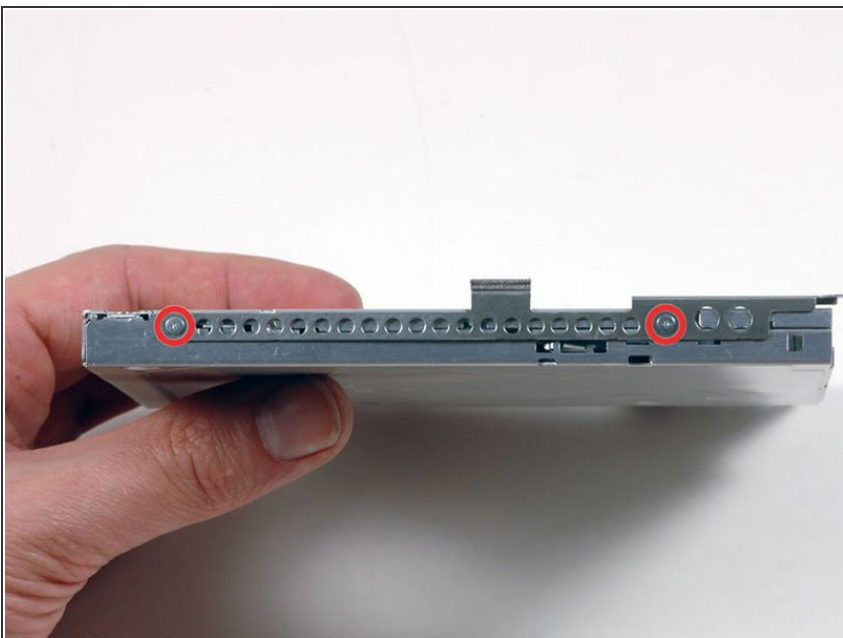
- Lift the optical drive up and out of the computer.

Step 14 — Optical Drive Cable



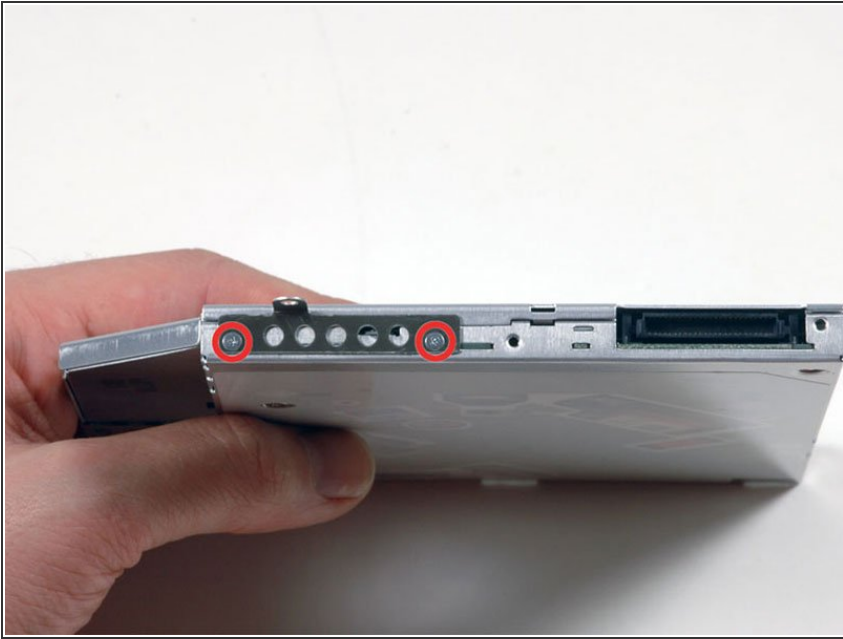
- Disconnect the orange ribbon cable from the optical drive.

Step 15 — Optical Drive



- ⓘ If your new optical drive already has brackets on it, you'll only need to transfer the data cable to your new drive.
- Remove the two silver Phillips screws securing the mounting bracket to the left side of the optical drive.

Step 16



- Rotate the drive and remove the two Phillips screws securing the mounting bracket to the rear of the optical drive.

Step 17



- Rotate the drive and remove the single Phillips screw securing the mounting bracket to the right side of the optical drive.
- ★ If you purchased an optical drive without mounting brackets, simply transfer the three silver metal brackets and orange ribbon cable to your new optical drive.
- ⓘ If you have a CD or any other object jammed in your optical drive, we have an [optical drive repair guide](#).

To reassemble your device, follow these instructions in reverse order.