



Panasonic Lumix DMC-F7 Battery Replacement

Replacing the old battery with a new one.

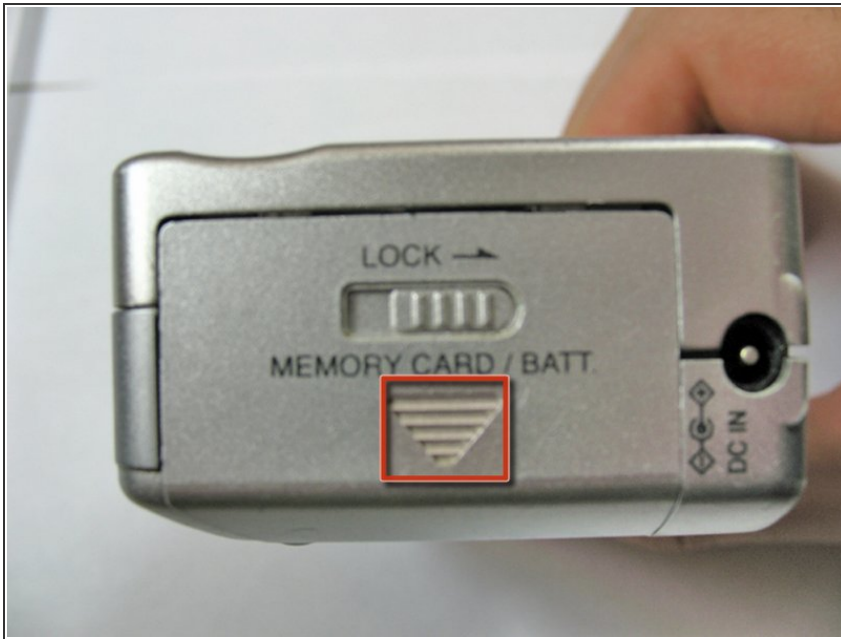
Written By: Hormoz Tarevern



INTRODUCTION

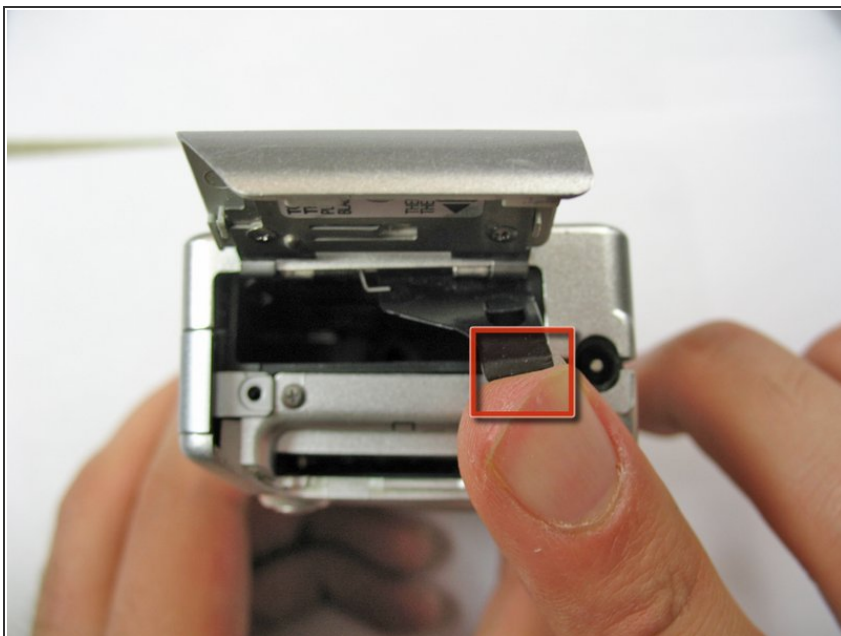
How to unlock the battery case and take out the battery.

Step 1 — Battery



- Slide the lock into the unlocked position to the right.
- ⓘ Use your finger to slide battery hatch towards the arrow sign.
- ⓘ Both battery and memory card should now be visible.

Step 2



- Open battery hatch and the black cover to expose the battery compartment.
- ⓘ The camera used to create these repair guides did not have a battery and memory card.
- Pull the battery out and replace with a new one.
- ✦ When putting the battery back in, make sure it is in the same orientation as before.
- Close the battery compartment, and make sure the lock is in the locked position.

To reassemble your device, follow these instructions in reverse order.

This document was last generated on 2019-07-20 04:16:41 PM.