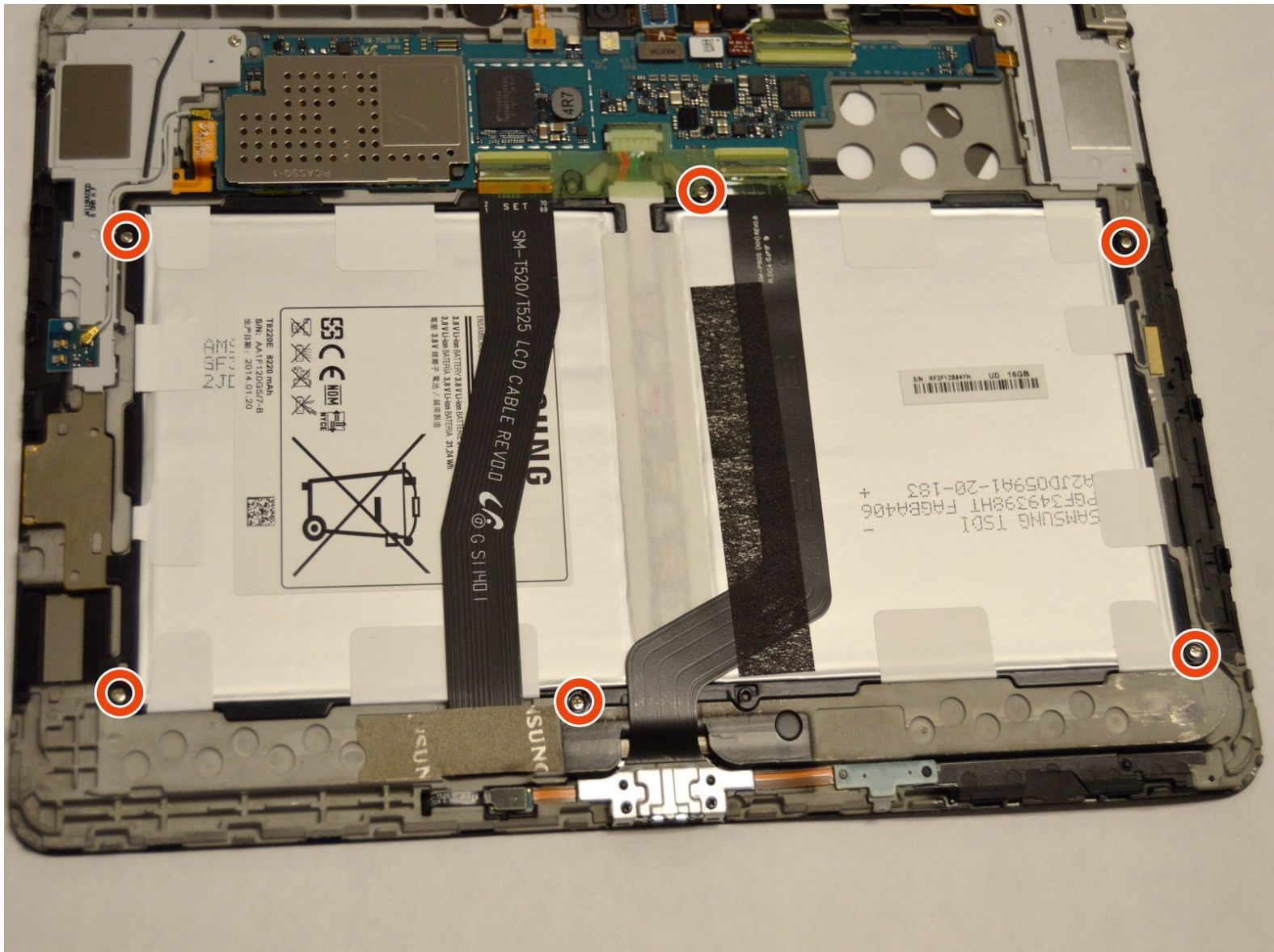




Samsung Galaxy Tab Pro 10.1 Battery Replacement

Replacing the battery on the Samsung Galaxy Tab Pro 10.1.

Written By: Stephen Yeung



INTRODUCTION

This guide will show you how to replace the battery on the Samsung Galaxy Tab Pro 10.1. First, the process will involve removing the rear panel of the device which will allow access to the interior where the battery is located. Then, the steps to remove the battery for replacement will be outlined.

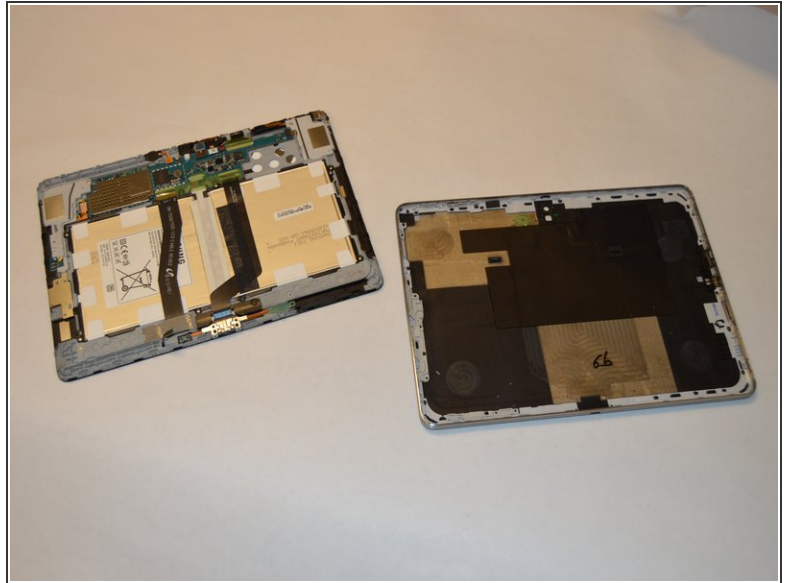
TOOLS:

- [Metal Spudger Set](#) (1)
- [iFixit Opening Tools](#) (1)
- [iFixit Precision Bit Driver, Aluminum](#) (1)
- [Tweezers](#) (1)
- [Phillips #00 Screwdriver](#) (1)

PARTS:

- [Galaxy Tab Pro 10.1 Battery](#) (1)

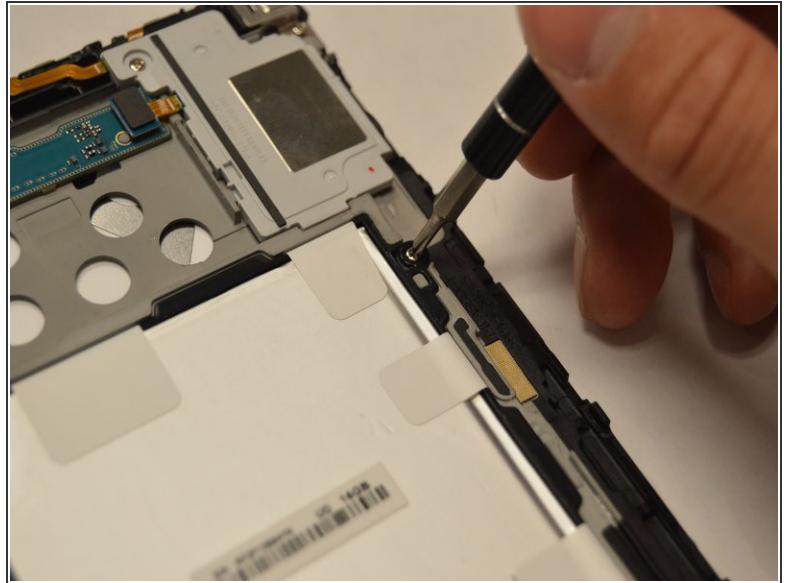
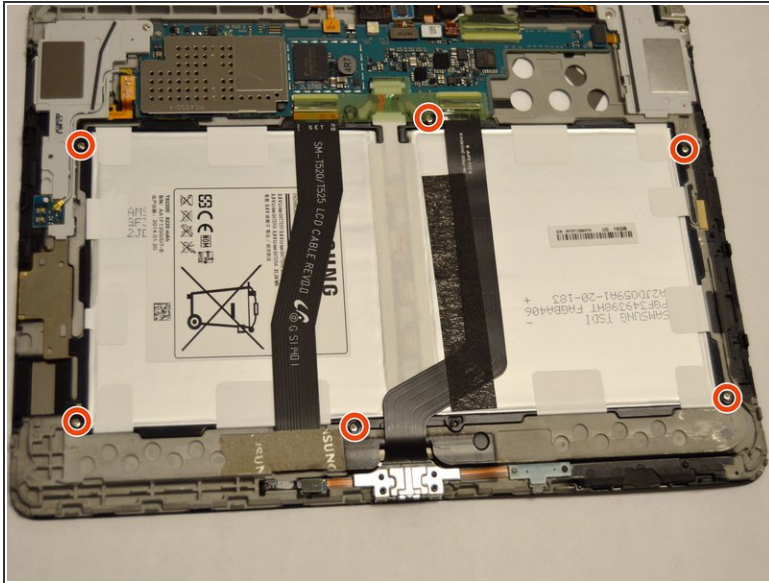
Step 1 — Rear Panel



! Be gentle, the front panel is connected to sensitive wiring that may snap if too much pressure is applied.

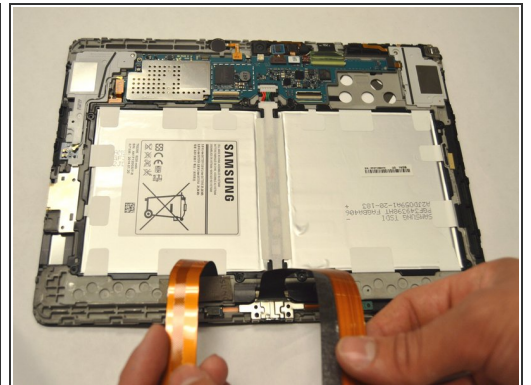
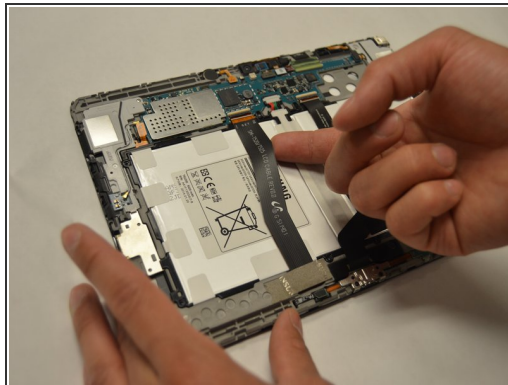
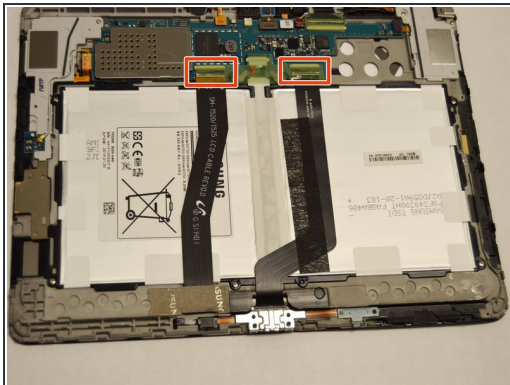
- Insert a plastic opening tool into the crevice between the screen and the side of the tablet.
- Go around the entire crevice with the plastic opening tool.
- Set aside the separated front and rear panels of the device.

Step 2 — Battery



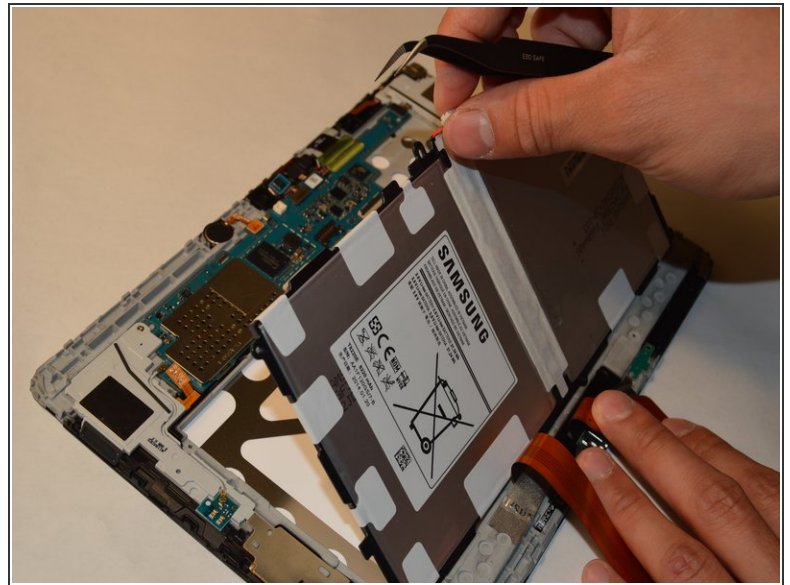
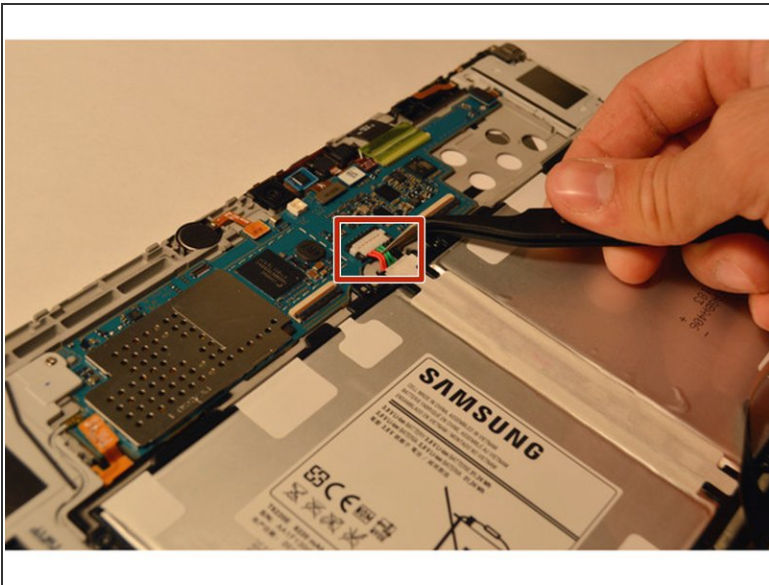
- Remove the six 4 mm Phillips #00 screws that hold the battery in place.

Step 3



- Remove the tape that runs along the length of the battery.
- Lift the retaining flaps of the ZIF connectors on each side of the battery connector.
- Remove the two ribbon cables that lie across the width of the battery and are connected to the motherboard. Place your finger underneath the ribbon cable and gently lift the cable upwards and off.

Step 4



- Using tweezers, remove the top center 6 pin power connector that is attached to the edge of the motherboard from the center of the battery. To unplug it, pull it upwards away from the motherboard.
- Detach the battery by gently lifting the battery out of the panel.

To reassemble your device, follow these instructions in reverse order.