



Samsung Galaxy Tab Pro 10.1 Rear Panel Replacement

Replace or remove the rear panel on the Samsung Galaxy Tab Pro 10.1.

Written By: Stephen Yeung



INTRODUCTION

This guide will show how to replace or remove the rear panel on the Samsung Galaxy Tab Pro 10.1. The rear panel can be removed to either access the interior of the device or removed for replacement. The guide will outline how to remove the rear panel from the front panel enclosure.



TOOLS:

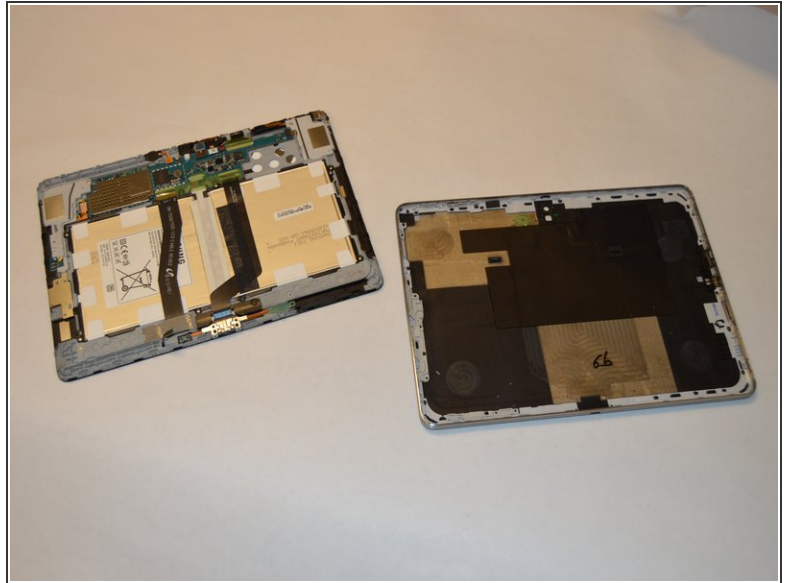
- [Metal Spudger Set](#) (1)
- [iFixit Opening Tools](#) (1)



PARTS:

- [Galaxy Tab Pro 10.1 \(Wi-Fi\) Rear Panel](#) (1)

Step 1 — Rear Panel



⚠ Be gentle, the front panel is connected to sensitive wiring that may snap if too much pressure is applied.

- Insert a plastic opening tool into the crevice between the screen and the side of the tablet.
- Go around the entire crevice with the plastic opening tool.
- Set aside the separated front and rear panels of the device.

To reassemble your device, follow these instructions in reverse order.