



Fujitsu LifeBook N3510 Hard Drive Replacement

Written By: Neil Daniels



INTRODUCTION

You can install a new hard drive in your computer.

TOOLS:

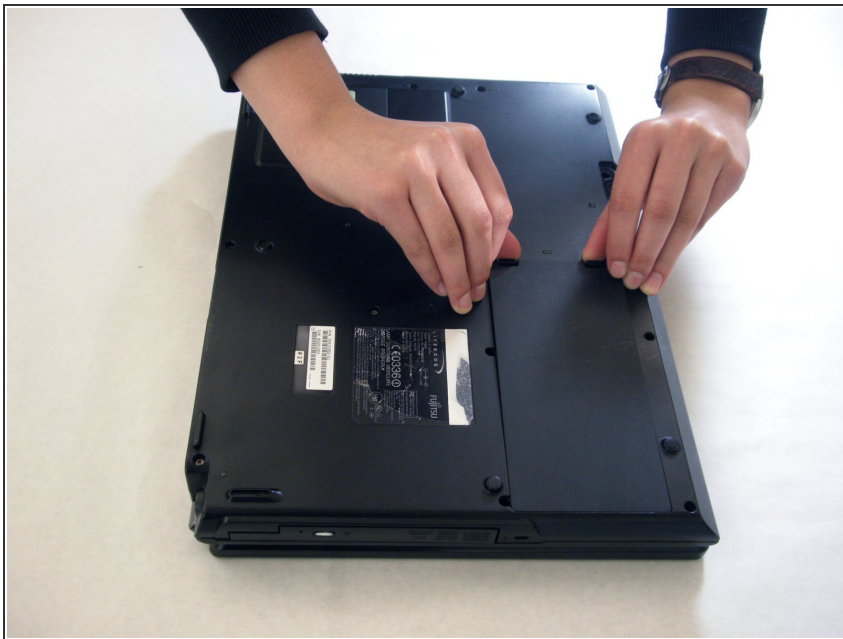
- [Phillips #1 Screwdriver](#) (1)
 - [Phillips #0 Screwdriver](#) (1)
 - [Spudger](#) (1)
 - [Magnetic Project Mat](#) (1)
-

Step 1 — Battery



- Locate the two clips on the bottom of the computer that support the battery.

Step 2



- Using your fingers, push the clips inward and then upward.
- Lift the battery out of the computer.

Step 3 — Hard Drive



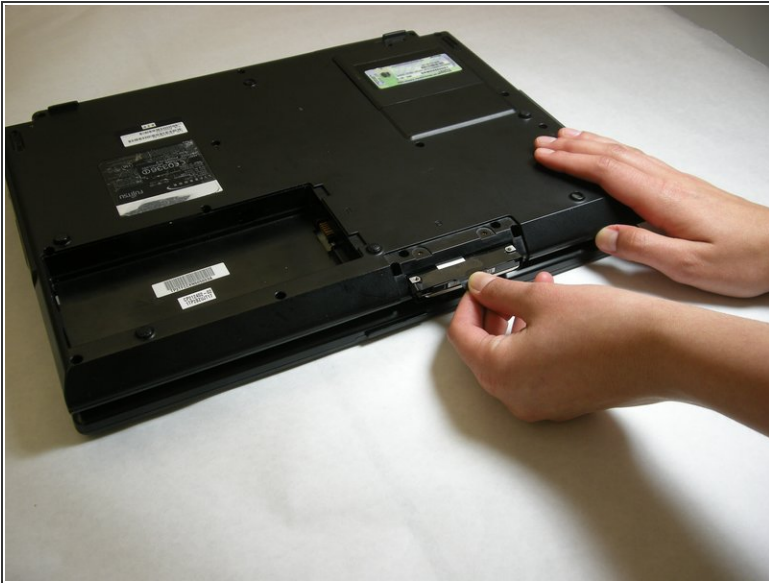
- Remove the two screws securing the hard drive access cover.
- ⓘ Screws not shown in picture.

Step 4



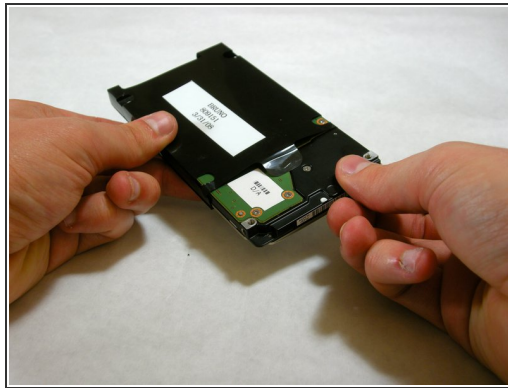
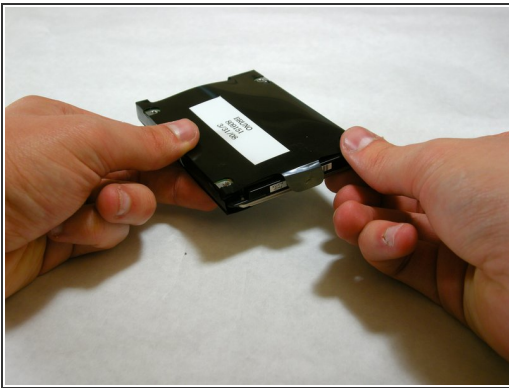
- Remove hard drive access cover.

Step 5



- Grasp hard drive sleeve tab and pull out.

Step 6



- Remove hard drive from plastic sleeve.

To reassemble your device, follow these instructions in reverse order.