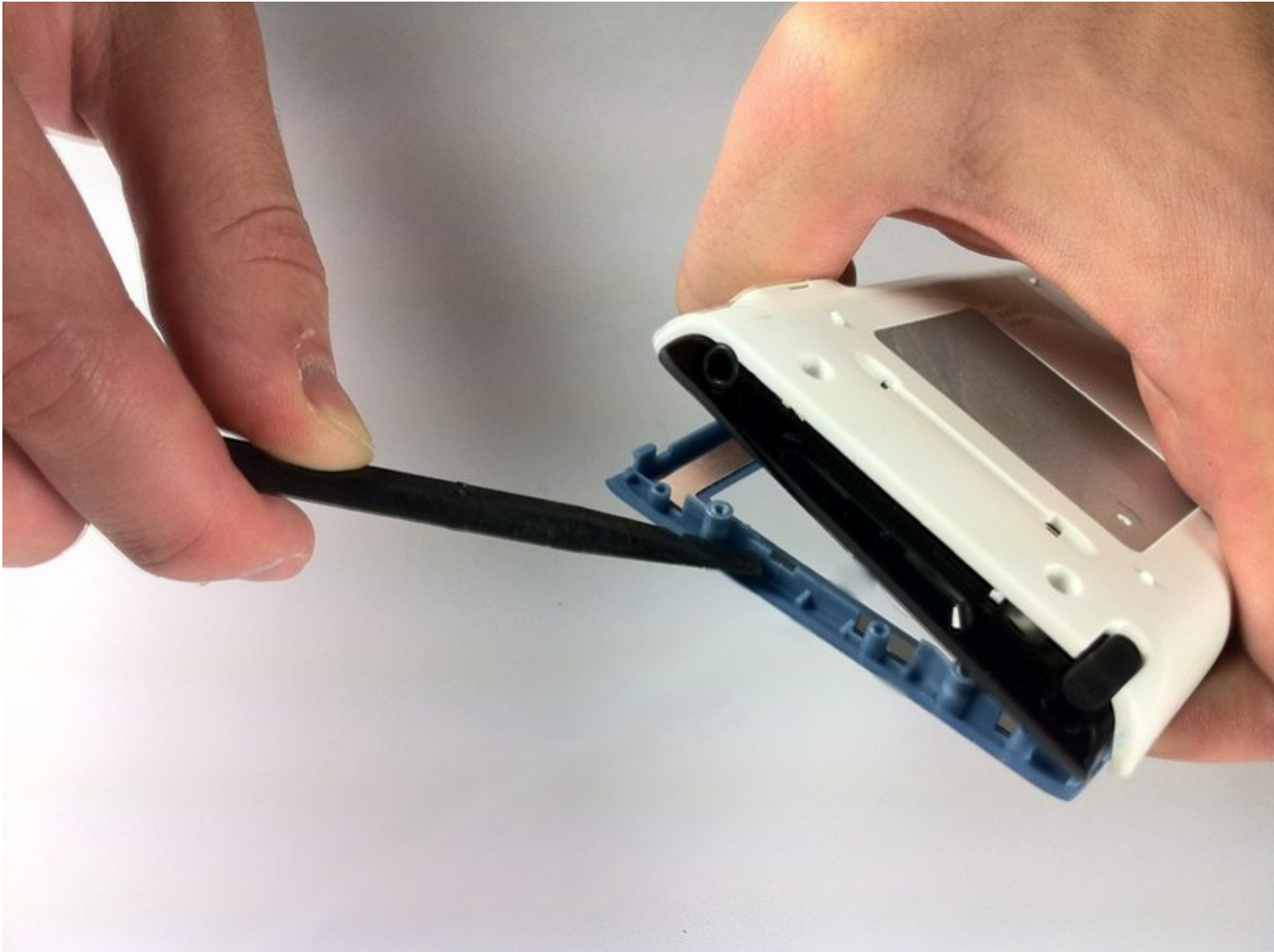




Palm Zire 31 Case Replacement

Taking off the case of the Zire 31.

Written By: Antonio



 **TOOLS:**

- Phillips #00 Screwdriver (1)
 - Spudger (1)
 - T6 Torx Screwdriver (1)
-

Step 1 — Case



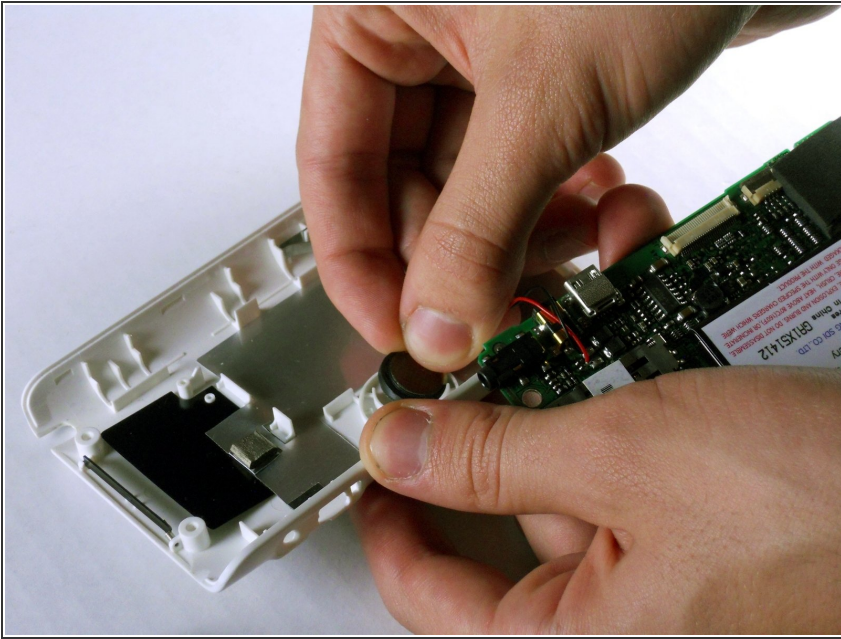
- Unscrew the two 7.35mm Torx T6 screws.

Step 2



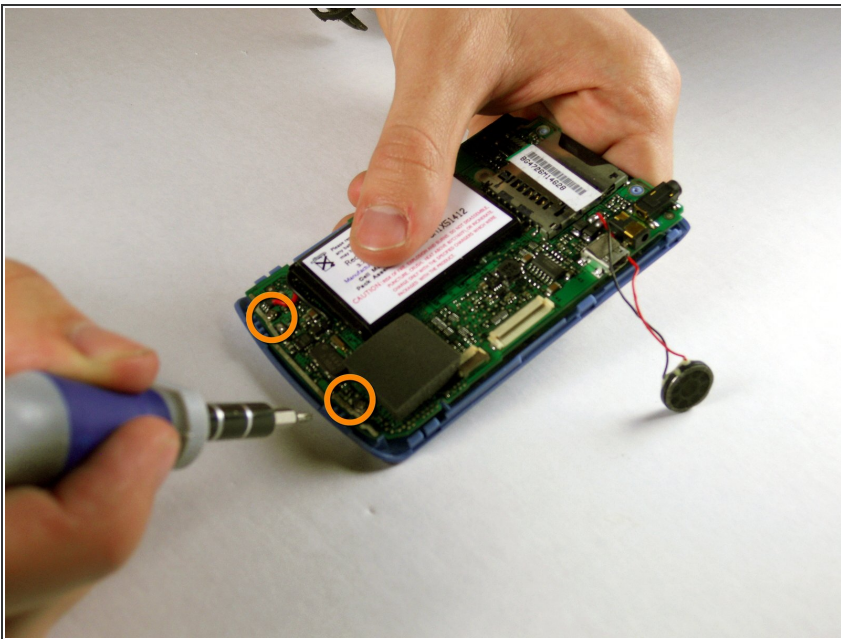
- Using the flat end of the spudger, carefully pry the black cover on the top from the blue front cover.

Step 3



- Carefully remove the speaker from the back white cover by just pulling it gently. It is glued on.

Step 4



- Unscrew the #00 5.75mm Phillips screws from the bottom of the motherboard. The front blue panel should fall right off.

To reassemble your device, follow these instructions in reverse order.