



Nikon Coolpix S210 Back Case Replacement

Remove the camera's back case.

Written By: Paul Doyle



INTRODUCTION

This is the first part to taking apart your Nikon Coolpix S210.

TOOLS:

- [Phillips #00 Screwdriver](#) (1)
 - [Spudger](#) (1)
-

Step 1 — Battery



- Place thumb on the battery cover panel on the bottom of the device.
- Slide the panel to the right away from the camera.

Step 2



- Slide the orange latch outward towards the corner of the camera.
- The battery should pop out.
- Remove the battery and reattach the cover.

Step 3 — Back Case



- After removing the battery, unscrew the four 3.10mm screws on the side opposite the buttons.

Step 4



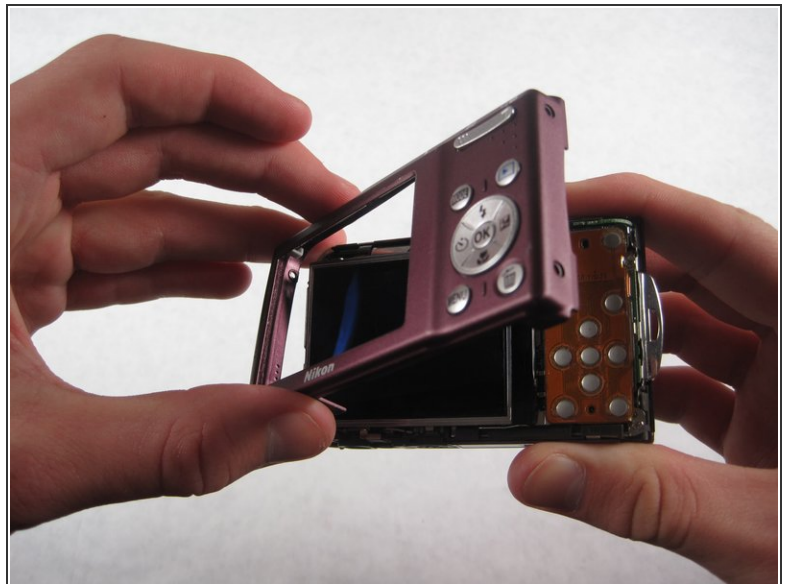
- Unscrew the three 4.05mm screws on the bottom of the camera below the lens.

Step 5



- Unscrew the two 4.05mm screws on the side next to the buttons.

Step 6



- Gently wedge the flat end of the spudger between the back case and the wrist-strap mount.
- ⓘ The wrist-strap mount is the thin metal piece on the side of the camera. Your camera may have the wrist-strap attached, but you will not need to remove it to continue.
- Carefully pry the back case away from the camera and then gently lift it off.

This document was generated on 2020-11-28 02:11:19 AM (MST).

To reassemble your device, follow these instructions in reverse order, paying careful attention to the locations of the different sizes of screws.