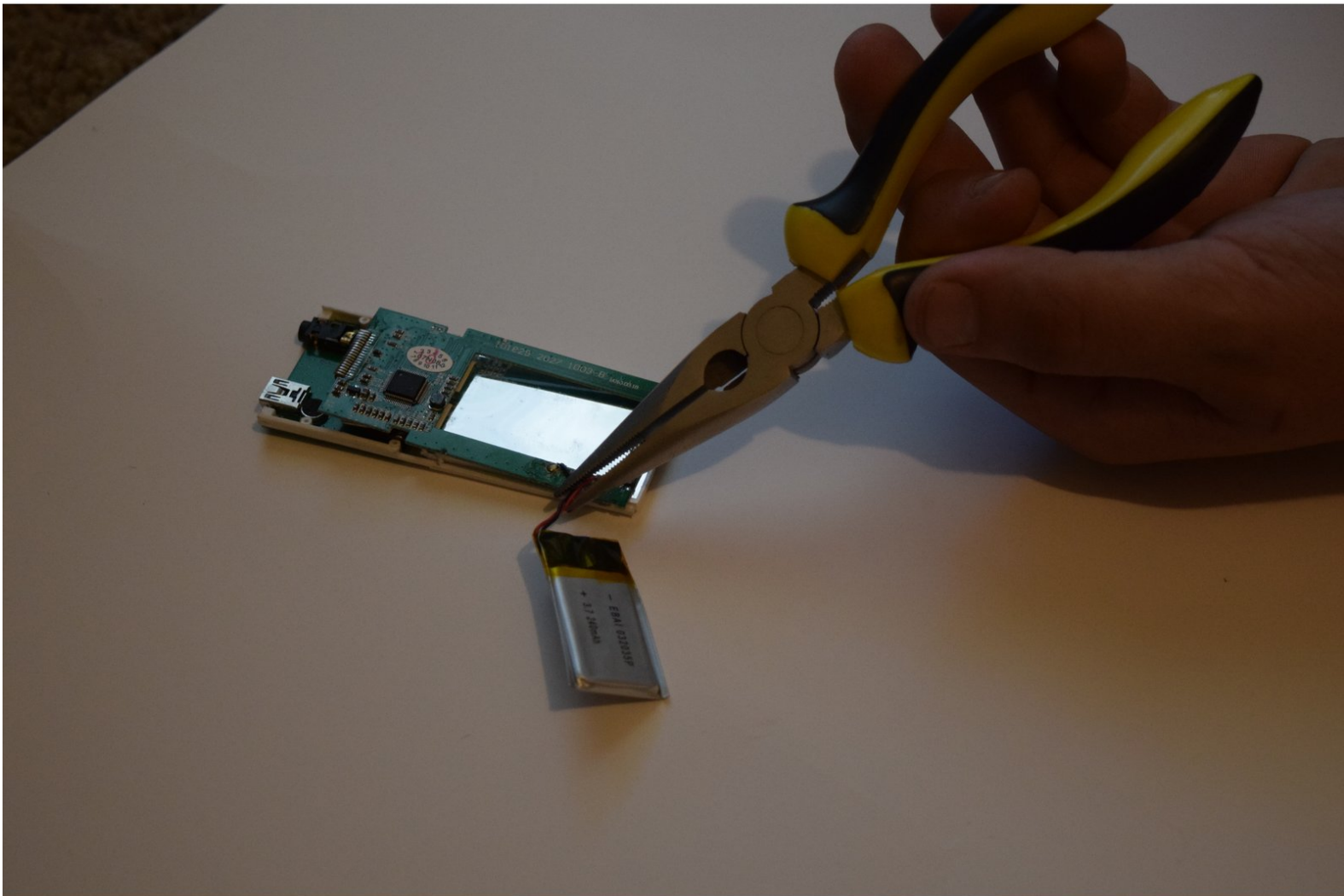




# Eclipse 180BL Battery Replacement

How to successfully replace the battery in an Eclipse 180BL.

Written By: Thomas Schwarz



---

## INTRODUCTION

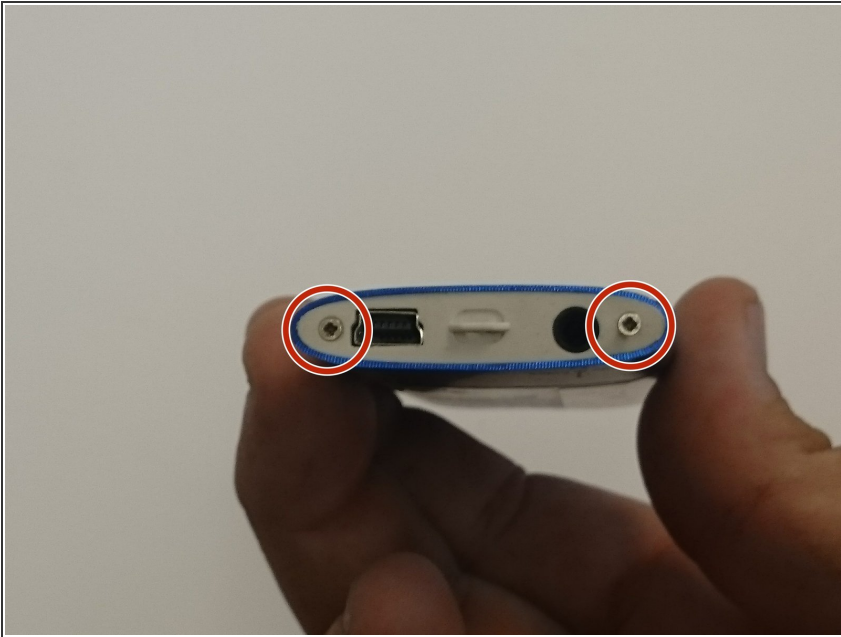
Following these easy steps will allow you to successfully replace the battery in the device.

---

### TOOLS:

- [Flush Wire Cutters](#) (1)
  - [Spudger](#) (1)
  - [Screwdriver](#) (1)
  - [Soldering Iron](#) (1)
-

## Step 1 — Battery



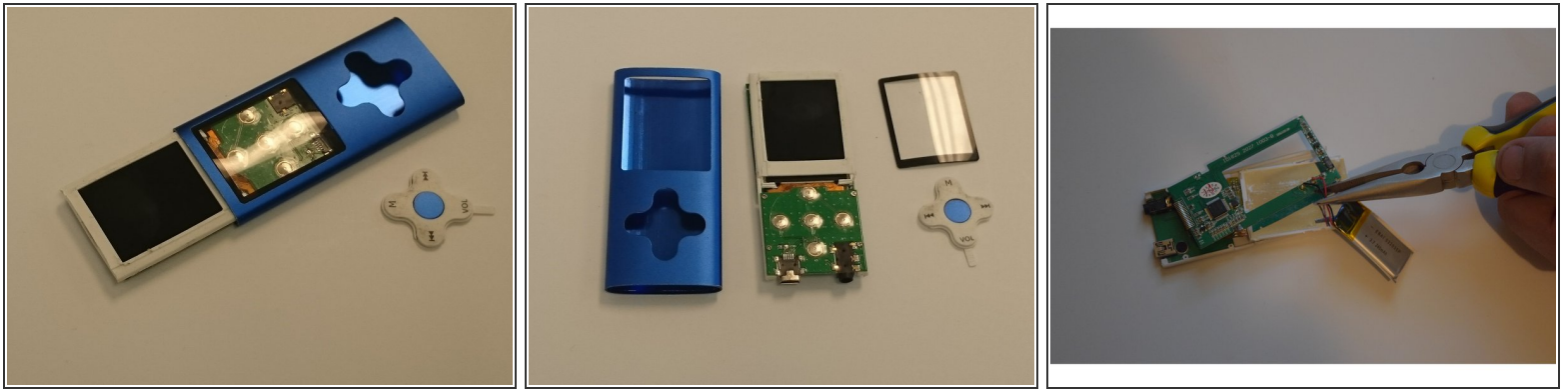
- Remove the two screws located on the bottom of the device with a phillips head screw driver.
- ⓘ The two screws can be removed using the PH00 head from the iFixit repair toolkit.
- ⓘ Both screws are 1/8 inch in length.
- The bottom cap will come off to reveal the inside main component.

## Step 2



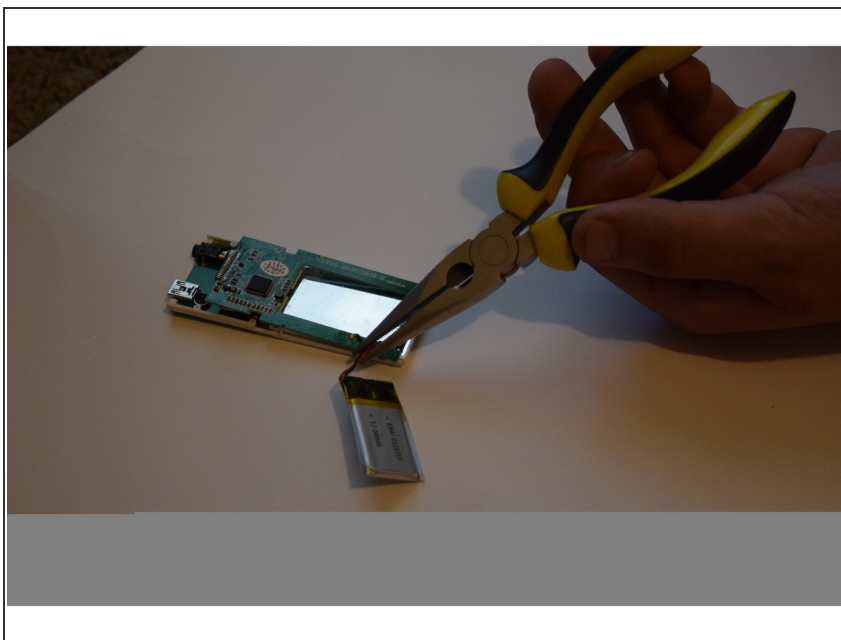
- Remove the main inner component using Spudger, by pushing on the USB port. This will take some force.
- Hold on the sides with your fingers, and push to release from the top.

### Step 3



- ❗ The plastic LCD cover and the key pad will now be loose; they were held in place by the tension between the case and the internal main component.
- ❗ Locate the large square pack with a black and red wire coming out of it, this is the battery.
  - Cut the red and black wires to remove the old battery.

### Step 4



- To Replace, connect the two new lines ( red and black) between the new battery and the device.
- You have successfully replaced the battery!

To reassemble your device, follow these instructions in reverse order.

