



Presto PopLite 04820 Power Cord Replacement

This is the cord that powers the popper.

Written By: Emanuele Rocco



INTRODUCTION

Shows how to replace the entire power cord. This may need to be done if the device shut off mid-use. Be sure that the PopLite is unplugged from the wall and has had time after use to cool down before working on the device.

TOOLS:

- [Metal Spudger Set](#) (1)
 - [Phillips #2 Screwdriver](#) (1)
-

Step 1 — Baseplate



⚠ Be sure that the popper is unplugged before disassembly.

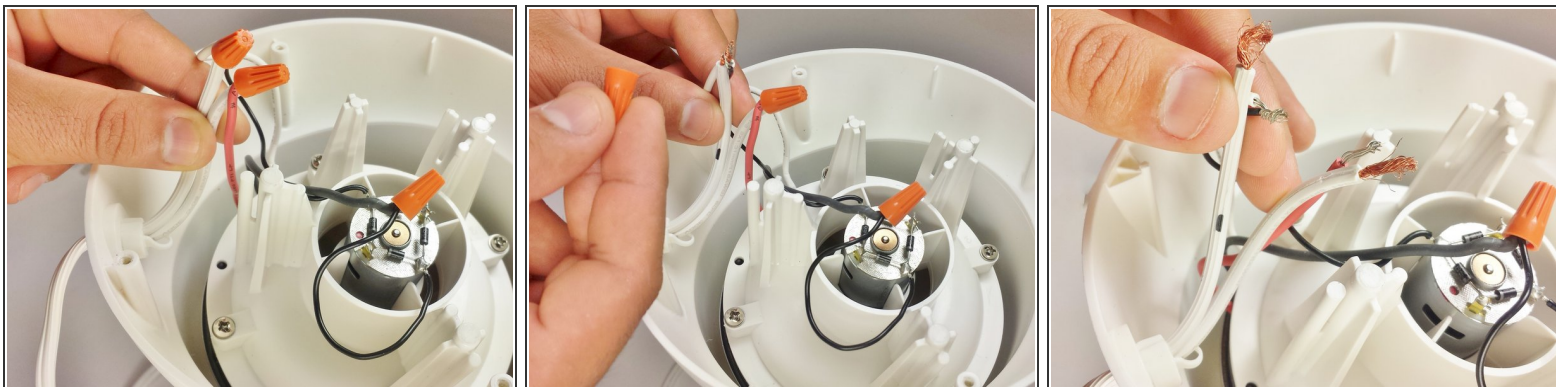
- Turn Presto Popper upside down.

Step 2



- Remove the four 9 mm Phillips #2 screws from the base.
- Once all four screws are removed, take the base off.

Step 3 — Power Cord



- Untwist the two orange twist-on wire connectors.
- ⓘ Make a note of which wires are in each of the orange caps.

Step 4



- Locate the plastic piece holding the power cord in place.
- Take the metal spudger from the tool kit and pry this piece loose.
- ⓘ This plastic piece may take excessive force to pry out, just keep trying until it pops out.
- Remove the power cord.

To reassemble your device, follow these instructions in reverse order.