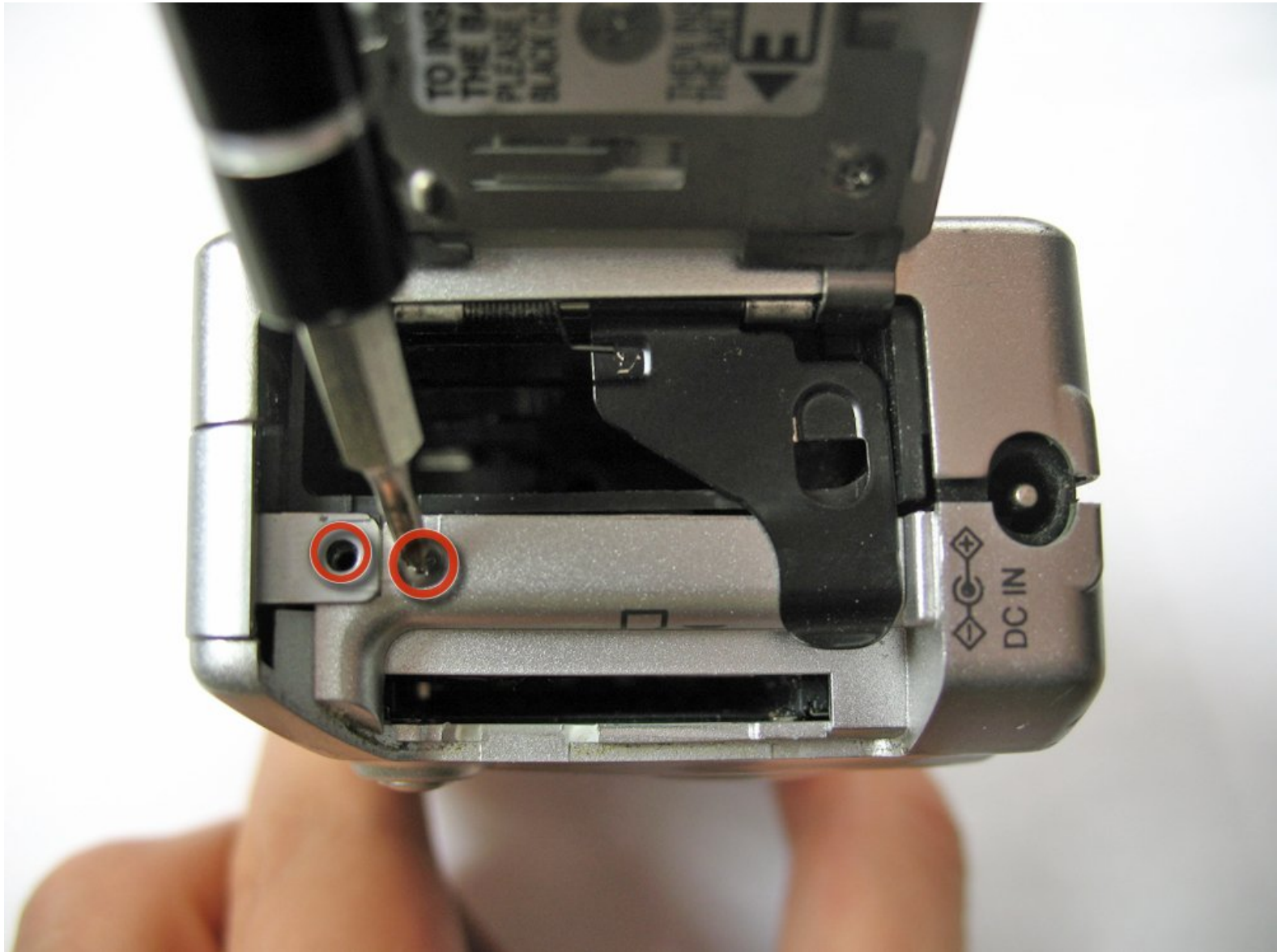




Panasonic Lumix DMC-F7 Back Case Replacement

Replacing the back case of the Panasonic Lumix DMC-F7.

Written By: Alex Penman



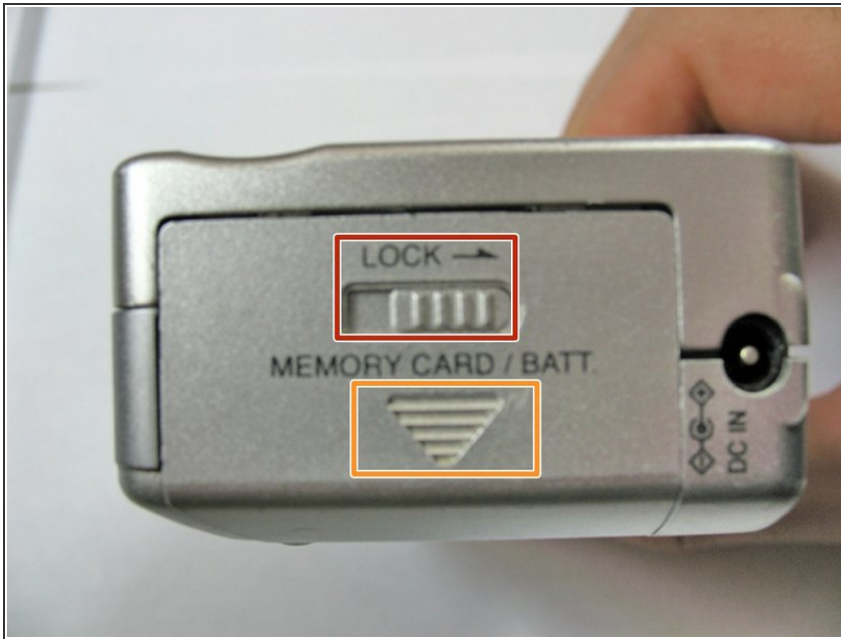
INTRODUCTION

Steps for removing the back half of the case and replacing it with a new one.

TOOLS:

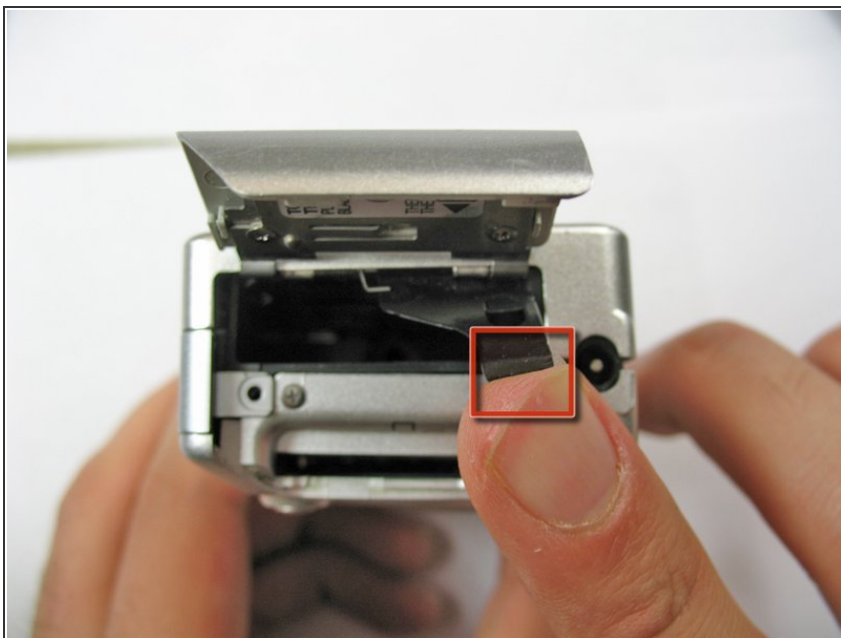
- [Spudger](#) (1)
 - [Phillips #00 Screwdriver](#) (1)
-

Step 1 — Battery



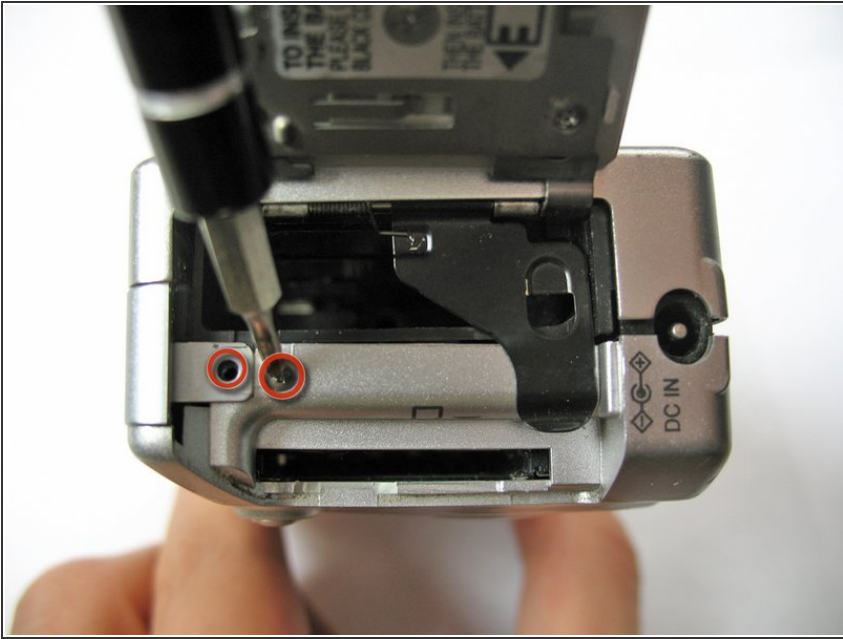
- Slide the lock into the unlocked position to the right.
- Use your finger to slide battery hatch towards the arrow sign.
- ⓘ Both battery and memory card should now be visible.

Step 2



- Open battery hatch and the black cover to expose the battery compartment.
- ⓘ The camera used to create these repair guides did not have a battery and memory card.
- Pull the battery out and replace with a new one.
- ☑ When putting the battery back in, make sure it is in the same orientation as before.
- Close the battery compartment and make sure the lock is in the locked position.

Step 3 — Back Case



- Remove the two 2.8 mm Phillips screws.

Step 4



- Use a Phillips screwdriver to remove the three 2.8 mm screws on the bottom of the camera.

Step 5



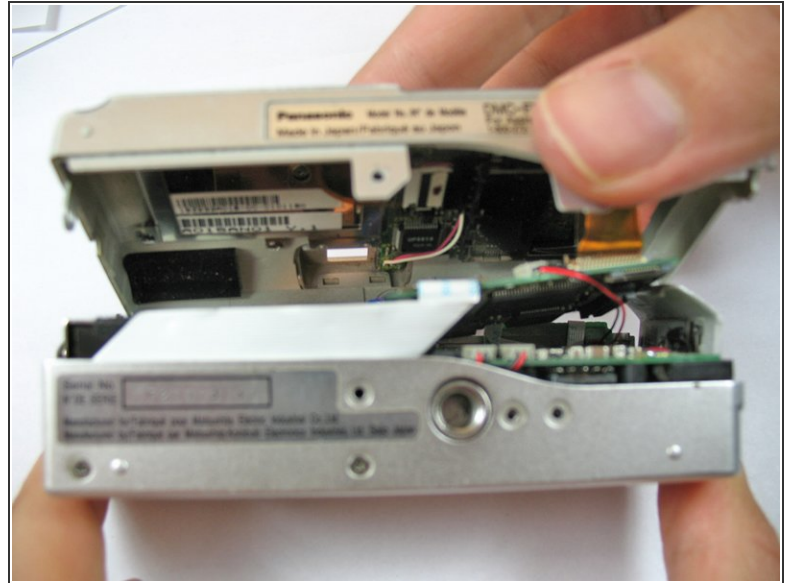
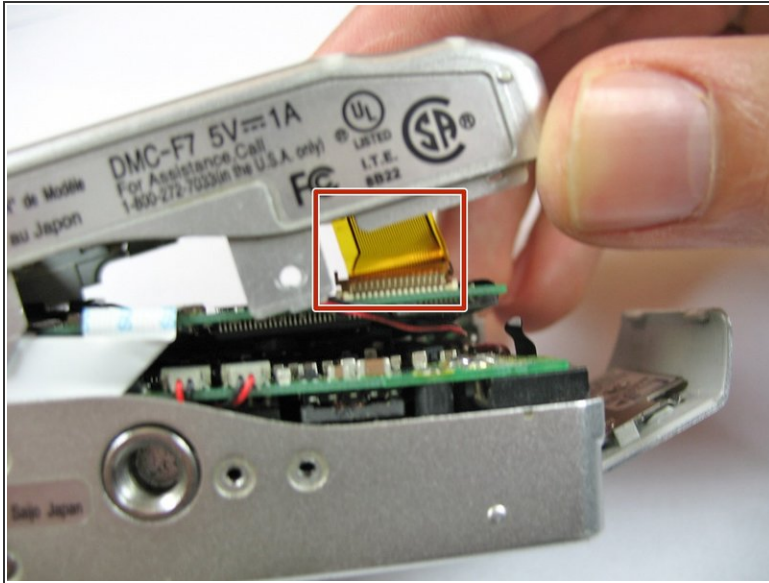
- Remove the two 2.8 mm Phillips screws on the side of the camera as shown in picture.

Step 6



- Use a spudger to pry open the case from all sides.

Step 7



⚠ Beware of the ribbon cable that is still attached when opening.

- Use your fingers to carefully pry off the back casing from the camera assembly.

Step 8



- Lay the camera on its front side. Use the spudger to open the film strip locking mechanism and remove strip.
- Hold down on the camera's metal casing with one hand. Use your other hand to completely lift the back case off the rest of the camera, making sure the film strip separates.

To reassemble your device, follow these instructions in reverse order.